

DIST
101 nm

ETE
0h59m

ETA
1449Z

FLIGHT FUEL
11 g

WIND
6 kts head

Calculated a few seconds ago [Refresh](#)

Navlog

Briefing

0 Files

0 New Msg

OVERVIEW

ETD **ETA**
10/26/2022



Time (Zulu)
1350Z

Departure
KFRG

Takeoff **Info**

Destination
KACY

Landing **Info**

Alternate
Optional

Aircraft
N106ST (C172)

Performance Profile
Max RPM Lean Mixture ...

ROUTE

Route
JFK DIXIE V1 HOWIE

Routes >

Altitude
4,000

Advisor >

Flight Rules
IFR

PAYLOAD

PAYLOAD (LBS)	COUNT	AVG. WT.	TOTAL
Persons	2	230	460
Cargo			0
Total Payload			460

FUEL

Fuel Policy
Minimum Fuel

FUEL ALLOCATION

	LBS	GAL
Start 19 gal available	104 / 222	18 / 37
Flight Fuel	69	11
Taxi Fuel	7	1
Fuel to Destination	62	10
Fuel at Landing	35	6
Alternate Fuel	0	0
Reserve Fuel	35	6
Extra Fuel	0	0

WEIGHTS

WEIGHTS	LBS
Zero Fuel Weight 480 lb available	1,720 / 2,200
Total Fuel at Start	104
Ramp Weight 383 lbs available	1,824 / 2,207
Taxi/Takeoff Fuel	7
Takeoff Weight 383 lbs available	1,817 / 2,200
Fuel to Destination	62
Landing Weight 445 lb available	1,755 / 2,200

DESTINATION SERVICES

FBO
Optional [Select FBO >](#)

FLIGHT LOG

Fuel at Shutdown (g) 0 Times Optional [Edit >](#)

Vertical Cross Section Chart

Data by NCEP

Chart by ForeFlight

Data source: Oct 26 2022 0600Z Time: Oct 26 2022 1336Z

Tropopause FL

474 474 475 475 474 473 471 468 465 463 463 463 463 463 463 464

FL60

+11 +11 +11 +11 +11 +11 +11 +11 +11 +11 +11 +11 +11 +11 +11 +11

FL50

+12 +12 +12 +12 +12 +12 +13 +13 +13 +13 +12 +12 +12 +12 +12 +12

FL40

+13 +13 +13 +13 +13 +13 +13 +13 +13 +13 +13 +13 +13 +13 +13 +13

FL30

+15 +14 +14 +14 +14 +14 +14 +14 +14 +14 +14 +14 +14 +14 +14 +14

FL20

+16 +16 +15 +15 +15 +15 +16 +16 +16 +16 +16 +15 +15 +15 +15 +15

FL10

+16 +16 +16 +16 +16 +15 +15 +15 +15 +15 +15 +15 +15 +15 +15 +15

KFRG 10-26T13:50Z -TOD- 10-26T13:54Z 4NM To JFK 10-26T13:58Z JFK 10-26T14:01Z 27NM To DIXIE 10-26T14:05Z 20NM To DIXIE 10-26T14:09Z 14NM To DIXIE 10-26T14:13Z 7NM To DIXIE 10-26T14:18Z DIXIE 10-26T14:22Z WHITE 10-26T14:26Z 8NM To CYN 10-26T14:30Z CYN 10-26T14:34Z 8NM To -TOD- 10-26T14:38Z -TOD- 10-26T14:42Z HOWIE 10-26T14:46Z KACY 10-26T14:50Z

Turbulence EDR: 0.0 < [color scale] < 1.0

Icing Severity: [color scale]

Temperatures are written as degree celsius and are negative if not prefixed with +

NOT FOR NAV

— Flight Path
 - - - Tropopause
 ■ Terrain

WIND/TEMP/TURB

FL 40

Data by NCEP

Chart by ForeFlight

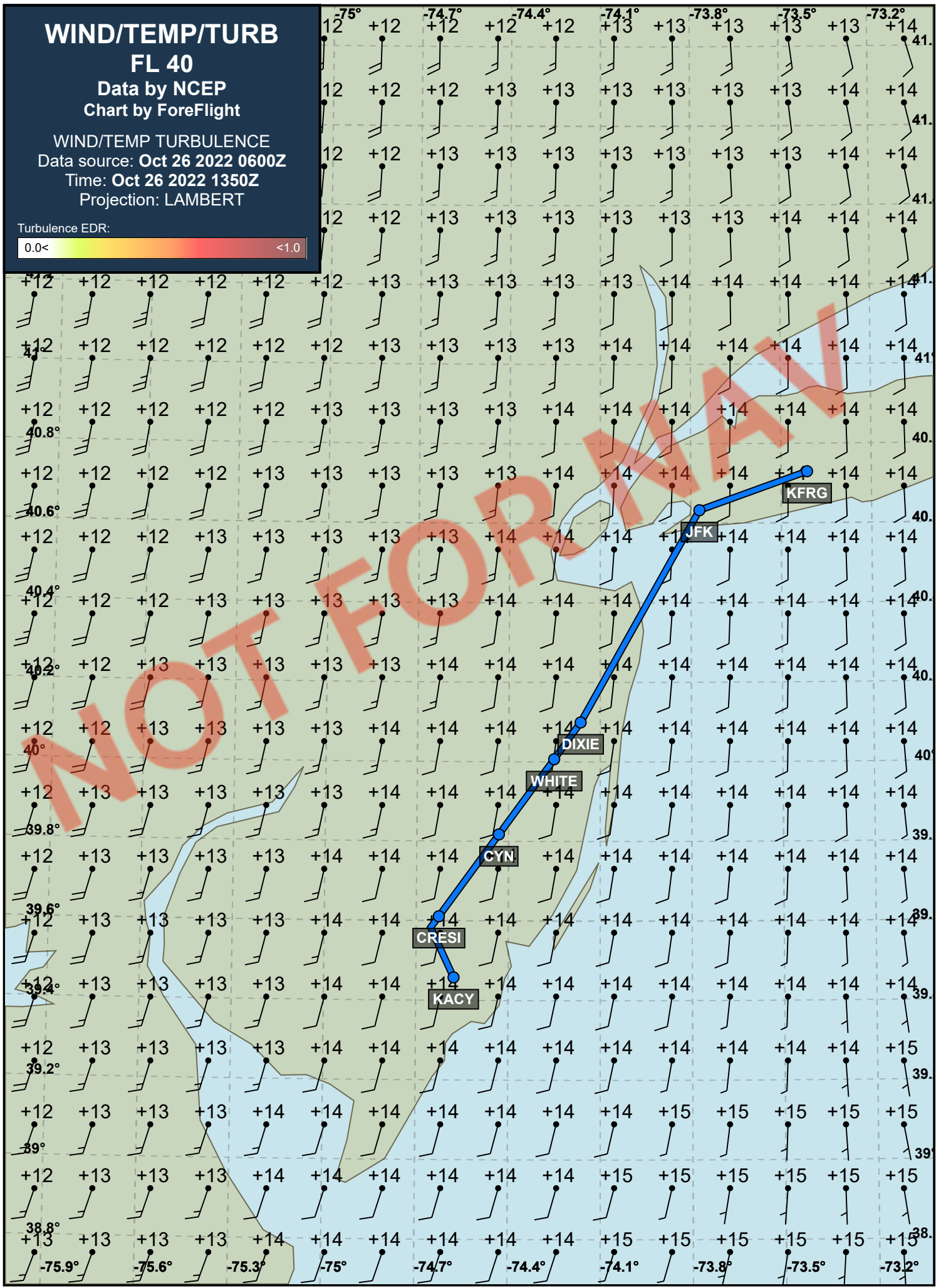
WIND/TEMP TURBULENCE

Data source: Oct 26 2022 0600Z

Time: Oct 26 2022 1350Z

Projection: LAMBERT

Turbulence EDR:



SIG. WEATHER


FL 250 to 630

Data by WAFC LONDON

Chart by ForeFlight

FIXED TIME PROGNOSTIC CHART
VALID Oct 26 2022 1200Z

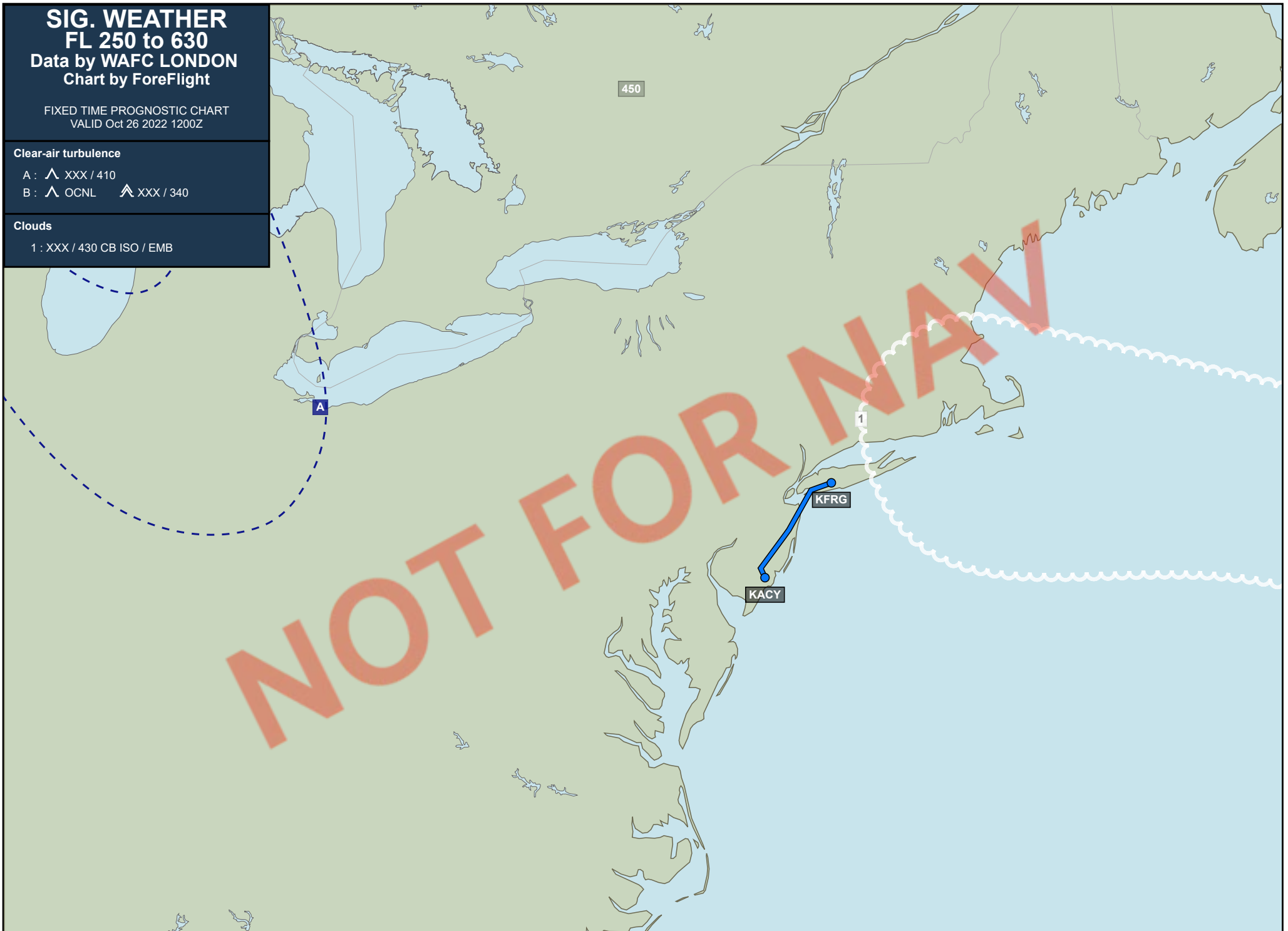
Clear-air turbulence

A :  XXX / 410

B :  OCNL  XXX / 340

Clouds

1 : XXX / 430 CB ISO / EMB



METARs / TAFs

Departure KFRG - Republic

METAR ● 261330Z 03003KT 2SM BR OVC004 19/18 A2985 RMK AO2 T01890178
TAF ● **KISP 261326Z 2613/2712 VRB04KT 3/4SM BR OVC002**
● **TEMPO 2613/2614 1/4SM FG**
● FM261500 VRB04KT 1SM BR OVC004
● FM261700 19005KT 2SM BR VCSH OVC008
● FM262200 22005KT 3SM BR VCSH BKN015 OVC030
● TEMPO 2622/2701 1SM BR
● FM270300 23004KT 6SM BR BKN025
● FM270500 VRB04KT P6SM FEW025 SCT100
● FM270900 31007KT P6SM FEW100

Destination KACY - Atlantic City International

METAR ● 261330Z 00000KT 1/2SM FG OVC002 16/16 A2986
TAF ● **261120Z 2612/2712 VRB03KT 1/4SM FG OVC002**
● FM261600 21008KT 2SM BR OVC004
● FM261900 22009KT P6SM OVC007
● FM262200 22005KT P6SM BKN020
● FM270100 26007KT P6SM BKN035
● FM270800 31008KT P6SM SCT040

Enroute airport KJFK - John F Kennedy International

METAR ● METAR KJFK 261251Z 03003KT 1SM R04R/P6000FT BR OVC003 18/18 A2987 RMK AO2 SFC VIS 5 SLP113 CIG 002V005 T01830178 \$
TAF ● 261304Z 2613/2718 03003KT 3SM BR OVC003
● TEMPO 2613/2615 1SM BR
● FM261500 VRB03KT 4SM BR BKN005 OVC012
● FM261800 21006KT P6SM BKN008 OVC015
● FM262100 22006KT P6SM BKN015 OVC030
● TEMPO 2621/2623 5SM -SHRA BR BKN010
● FM262300 23007KT P6SM VCSH SCT010 BKN025
● FM270100 25007KT P6SM BKN035
● FM270400 28005KT P6SM SCT070
● FM271000 32010KT P6SM FEW070
● FM271500 32012G17KT P6SM FEW250

Enroute airport KLAG - Laganardia

METAR ● 261251Z 06003KT 1/8SM R04/3500VP6000FT FG VV003 17/16 A2986 RMK AO2 SFC VIS 1/4 SLP110 T01720161
TAF ● 261305Z 2613/2718 05005KT 1/4SM FG OVC002
● TEMPO 2613/2614 1/2SM FG
● FM261400 06006KT 1SM BR OVC003
● FM261600 06006KT 4SM BR OVC004
● FM261800 17005KT P6SM OVC008
● FM262100 21007KT P6SM BKN015 OVC030
● TEMPO 2621/2623 5SM -SHRA BR BKN010
● FM262300 25007KT P6SM VCSH SCT010 BKN025
● FM270100 26006KT P6SM BKN035
● FM270400 29005KT P6SM SCT070
● FM271000 32012KT P6SM FEW070
● FM271500 32013G18KT P6SM FEW250

Enroute airport KBLM - Monmouth Executive

METAR ● SPECI KBLM 261319Z AUTO 08007KT 1/2SM FG OVC003 A2986 RMK AO2 FZFRANO RVRNO \$
TAF ● KWRI 261330Z 2613/2716 12004KT 0800 FG VV002 QNH2984INS
● BECMG 2615/2616 VRB05KT 6000 BR OVC006 QNH2978INS
● BECMG 2617/2618 23006KT 9999 NSW BKN015 QNH2974INS
● BECMG 2702/2703 28006KT 9999 SCT030 BKN080 QNH2984INS
● BECMG 2712/2713 32015G25KT 9999 SKC QNH3004INS TX23/2619Z TN16/2711Z

Enroute airport **KMJX - Ocean County**

METAR ● METAR KNEI 261300Z AUTO 09004KT 1/4SM FG VV002 16/16 A2984 RMK AO2 SLP103 T01610161 PNO \$
TAF ● KWRI 261330Z 2613/2716 12004KT 0800 FG VV002 QNH2984INS
● BECMG 2615/2616 VRB05KT 6000 BR OVC006 QNH2978INS
● BECMG 2617/2618 23006KT 9999 NSW BKN015 QNH2974INS
● BECMG 2702/2703 28006KT 9999 SCT030 BKN080 QNH2984INS
● BECMG 2712/2713 32015G25KT 9999 SKC QNH3004INS TX23/2619Z TN16/2711Z

SIGMETs

East U.S.

CONVECTIVE SIGMET

WSUS31 KPCI 261255
SIGE
?MKCE WST 261255
CONVECTIVE SIGMET 13E
VALID UNTIL 1455Z
FL CSTL WTRS
FROM 90WSW CTY-70WNW PIE-90W PIE-150SSW TLH-90WSW CTY
AREA EMBD TS MOV FROM 27035KT. TOPS TO FL420.
OUTLOOK VALID 261455-261855
AREA 1...FROM MPV-140SE BGR-190SE ACK-190S ACK-HTO-MPV
WST ISSUANCES POSS. REFER TO MOST RECENT ACUS01 KWNS FROM STORM
PREDICTION CENTER FOR SYNOPSIS AND METEOROLOGICAL DETAILS.
AREA 2...FROM AMG-60SSE SAV-SRQ-190WSW PIE-CEW-AMG
WST ISSUANCES POSS. REFER TO MOST RECENT ACUS01 KWNS FROM STORM
PREDICTION CENTER FOR SYNOPSIS AND METEOROLOGICAL DETAILS.

No SIGMET found for KZNY, KZDC

NOTAMs

NOTAMs have been filtered using the following criteria:

Filtered NOTAMs not active during this flight

Filtered all non-oceanic ARTCC NOTAMs

Recent NOTAMs (added or edited within 12 hours) KFRG - Republic

No NOTAMs have been submitted for KFRG within the last 12 hours

Departure KFRG - Republic

RUNWAY

FRG 10/058 FRG RWY 19 FICON 5/5/5 100 PCT WET OBS AT 2210252341. 2210252341-2210262341

FRG 10/057 FRG RWY 14 FICON 5/5/5 100 PCT WET OBS AT 2210252340. 2210252340-2210262340

FRG 10/021 FRG RWY 19 PAPI BEYOND 4DEG LEFT OF RCL UNUSABLE 2110111840-PERM

TAXIWAY

FRG 10/059 FRG TWY ALL FICON WET OBS AT 2210252341. 2210252341-2210262341

AERODROME

FRG 01/075 FRG AD AP RDO ALTIMETER UNREL. AUTOLAND, HUD TO TOUCHDOWN, ENHANCED FLT VISION SYSTEMS TO TOUCHDOWN, HEL OPS REQUIRING RDO ALTIMETER DATA TO INCLUDE HOVER AUTOPILOT MODES AND CAT A/B/PERFORMANCE CLASS TKOF AND LDG NOT AUTHORIZED EXC FOR ACFT USING APPROVED ALTERNATIVE METHODS OF COMPLIANCE DUE TO 5G C-BAND INTERFERENCE PLUS SEE AIRWORTHINESS DIRECTIVES 2021-23-12, 2021-23-13 2201190501-2401190501

OBSTRUCTION

FRG 10/055 FRG OBST TOWER LGT (ASR 1065572) 404303.00N0732004.00W (3.6NM E FRG) 288.1FT (265.1FT AGL) **U/S** 2210241149-2211081049

APRON

FRG 10/060 FRG APRON ALL FICON WET OBS AT 2210252342. 2210252342-2210262342

STANDARD INSTRUMENT PROCEDURE

FDC 2/9553 FRG SID REPUBLIC, FARMINGDALE, NY. REPUBLIC ONE DEPARTURE... COATE DEPARTURES: NA EXCEPT FOR AIRCRAFT EQUIPPED WITH SUITABLE RNAV SYSTEM WITH GPS, SAX VORTAC OUT OF SERVICE. 2209191420-2305011420EST

STANDARD TERMINAL ARRIVAL ROUTE

FDC 2/8716 FRG STAR REPUBLIC AIRPORT, FARMINGDALE, NY LENDY SEVEN ARRIVAL... DISREGARD EXPECT HARTY AT FL210. SHOULD READ EXPECT JENNO AT FL230 2203241300-2212312359

FDC 2/1225 FRG STAR REPUBLIC AIRPORT, FARMINGDALE, NY LENDY ARRIVAL... UNUSABLE BLW 4000FT 2201060000-2301052359

INSTRUMENT APPROACH PROCEDURE

FDC 2/7038 FRG IAP REPUBLIC, FARMINGDALE, NY. RNAV (GPS) Y RWY 14, AMDT 2E... LNAV/VNAV DA 443/HAT 366 ALL CATS. EXCEPT WHEN ADVISED BY ATCT THAT THIS CRANE IS DOWN. TEMPORARY CRANE 232FT MSL 4338FT W OF RWY 14 (2020-AEA-12862-OE). 2210031247-2212091247EST

FDC 2/7039 FRG IAP REPUBLIC, FARMINGDALE, NY. RNAV (RNP) Z RWY 14, ORIG-B... RNP 0.30 DA 557/HAT 480 ALL CATS. VISIBILITY ALL CATS 1 1/8. EXCEPT WHEN ADVISED BY ATCT THAT THIS CRANE IS DOWN. TEMPORARY CRANE 232FT MSL 4338FT W OF RWY 14 (2020-AEA-12862-OE). 2210031247-2212091247EST

Recent NOTAMs (added or edited within 12 hours) KACY - Atlantic City International

RUNWAY

ACY 10/120 ACY RWY 13/31 **CLSD** EXC AIR NTL GUARD ALERT ACFT 2210261930-2210262230

[Inactive at ETA]

ACY 10/123 ACY RWY 04 FICON 5/5/5 100 PCT WET OBS AT 2210260739. 2210260739-2210270739

ACY 10/122 ACY RWY 13 FICON 5/5/5 100 PCT WET OBS AT 2210260738. 2210260738-2210270738

TAXIWAY

ACY 10/087 ACY TWY P BTN TWY D AND TWY N **CLSD** 2210261000-2210261815

Destination KACY - Atlantic City International

RUNWAY

ACY 10/044 ACY RWY 22 VASI **U/S** 2210101518-2210312000EST

ACY 10/031 ACY RWY 31 BAK-12 ARST SYSTEM **U/S** 2210062150-2210302359

ACY 08/146 ACY RWY 31 RWY END ID LGT **U/S** 2208281841-2210312359

ACY 08/143 ACY RWY 13/31 RCLL **U/S** 2208281833-2210312359

TAXIWAY

ACY 10/055 ACY TWY B CL LGT BTN TWY A AND TWY P **U/S** 2210122209-2210312359

AERODROME

ACY 09/032 ACY AD AP ALL SFC WIP CONST 2209090226-2212312200

ACY 08/171 ACY AD AP WINDCONE FOR RWY 31 LGT **U/S** 2208310202-2211302359

ACY 08/170 ACY AD AP WINDCONE FOR RWY 13 LGT **U/S** 2208310201-2211302359

ACY 01/136 ACY AD AP RDO ALTIMETER UNREL. AUTOLAND, HUD TO TOUCHDOWN, ENHANCED FLT VISION SYSTEMS TO TOUCHDOWN, HEL OPS REQUIRING RDO ALTIMETER DATA TO INCLUDE HOVER AUTOPILOT MODES AND CAT A/B/PERFORMANCE CLASS TKOF AND LDG NOT AUTHORIZED EXC FOR ACFT USING APPROVED ALTERNATIVE METHODS OF COMPLIANCE DUE TO 5G C-BAND INTERFERENCE PLUS SEE AIRWORTHINESS DIRECTIVES 2021-23-12, 2021-23-13 2201190501-2401190501

OBSTRUCTION

ACY 10/096 ACY OBST TOWER LGT (ASR 1048333) 393034.00N0743537.00W (3.2NM NNW ACY) 294.9FT (234.9FT AGL) **U/S** 2210211808-2211042359

ACY 10/075 ACY OBST TOWER LGT (ASR 1221704) 392656.20N0743752.00W (2.5NM WSW ACY) 257.9FT (190.0FT AGL) **U/S** 2210161701-2210311701

ACY 10/001 ACY OBST POLE LGT (ASN UNKNOWN) 392707N0743417W (0.35NM SE ACY) 160FT (100FT AGL) **U/S** 2210011226-2303312359
ACY 08/175 ACY OBST POLE (ASN UNKNOWN) 392707N0743348W (0.63NM SE ACY) 77FT (20FT AGL) NOT LGTD 2208310210-2211302359
ACY 08/174 ACY OBST POLE (ASN UNKNOWN) 392747N0743509W (0.64NM WNW ACY) 86FT (20FT AGL) NOT LGTD 2208310208-2211302359

AIRSPACE

ACY 10/112 ACY AIRSPACE UAS WI AN AREA DEFINED AS .5NM RADIUS OF 392839N0743507W (1.4NM N ACY) SFC-400FT AGL DLY 1200-2100 2210251200-2210262100

APRON

ACY 09/051 ACY APRON ARM DISARM RAMP FOR RWY 31 **CLSD** EXC MIL OPS 2209131137-2301171600
ACY 09/050 ACY APRON ARM DISARM RAMP FOR RWY 13 **CLSD** EXC MIL OPS 2209131133-2301171600
ACY 08/173 ACY APRON AIR NATL GUARD RAMP BDRY MARKING NOT STD 2208310203-2211302359

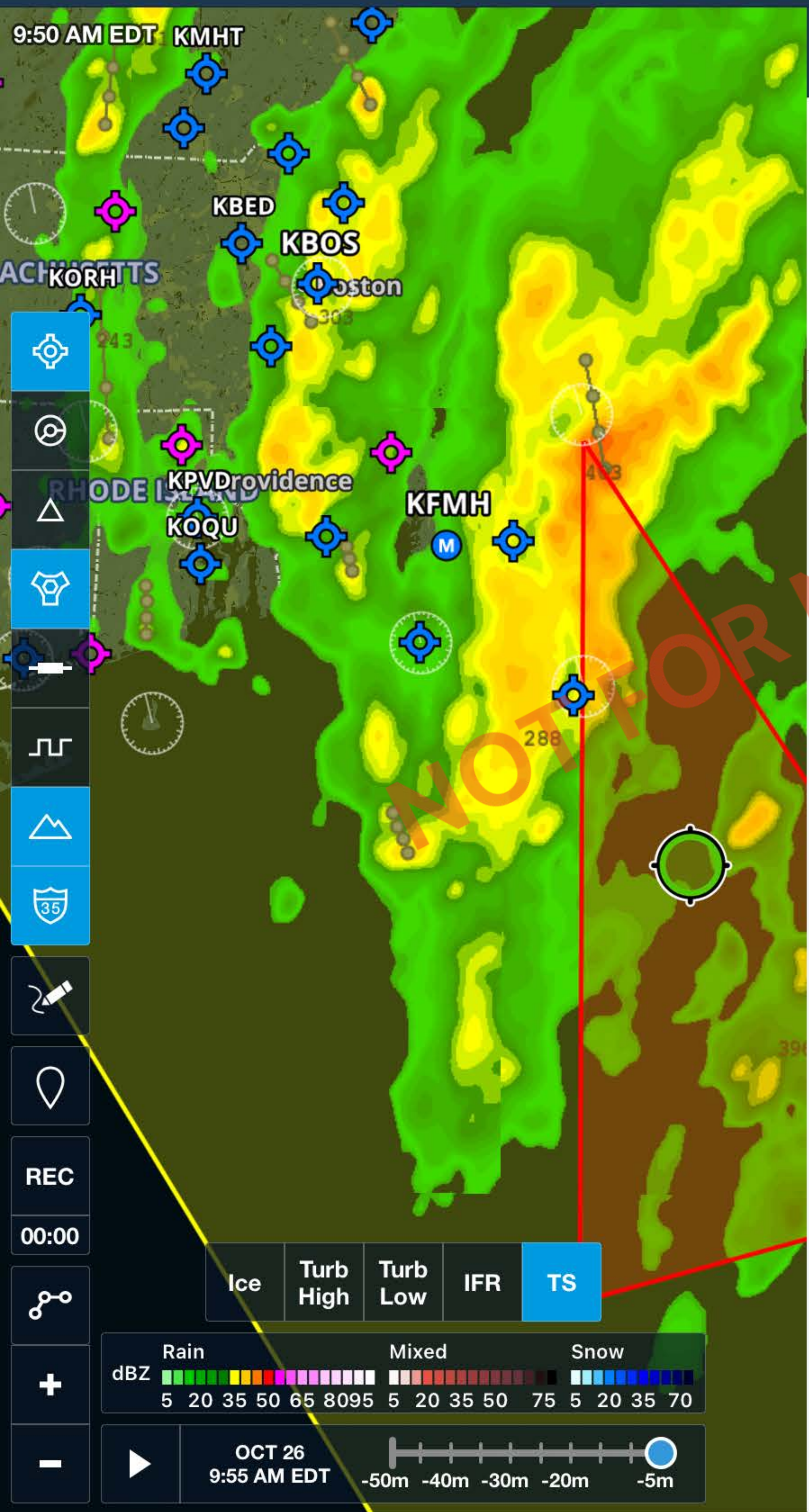
INSTRUMENT APPROACH PROCEDURE

FDC 2/0467 ACY IAP U.S. DOD ATLANTIC CITY INTL, ATLANTIC CITY, NJ. HI - ILS OR LOC RWY 13, AMDT 4C... S-LOC 13 MDA CATS C/D/E 480/HAA 405, VIS CAT C RVR 4000. CHANGE NOTE TO READ: **WHEN ALS INOP, INCREASE RVR TO 60 AND VIS TO 1 MILE. 2207281813-2407281813EST

Enroute navigation NOTAMs

NAVIGATION

JFK 10/197 JFK NAV VOR/DME **U/S** 2210241100-2211071100
JFK 10/261 JFK NAV ILS RWY 04L GP **U/S** 2210231105-2210262359
MIV 11/089 COL NAV VOR **U/S** 2111101745-2212212359
JFK 10/197 JFK NAV VOR/DME **U/S** 2210241100-2211071100
MIV 09/109 CYN NAV TACAN AZM **U/S** 2209161021-2212312000EST
TEB 07/092 TEB NAV ILS RWY 19 LOC/GP/DME **U/S** 2207122013-2211012359
HPN 03/050 HPN NAV ILS RWY 16 NOT MNT DLY 0300-1000 2203140300-2211051000
HPN 03/051 HPN NAV ILS RWY 34 NOT MNT DLY 0300-1000 2203140300-2211051000
HPN 03/052 HPN NAV ILS RWY 16 SPECIAL AUTH CAT II NA DLY 0300-1000 2203140300-2211051000
MIV 11/089 COL NAV VOR **U/S** 2111101745-2212212359



Close **Map Info**

- ⚡ **Convective**
 Oct 26, 9:55 AM - 11:55 AM EDT
 Active, Surface - 40,000' MSL
- ⚡ **Convective**
 Oct 26, 11:55 AM - 3:55 PM EDT
 Outlook

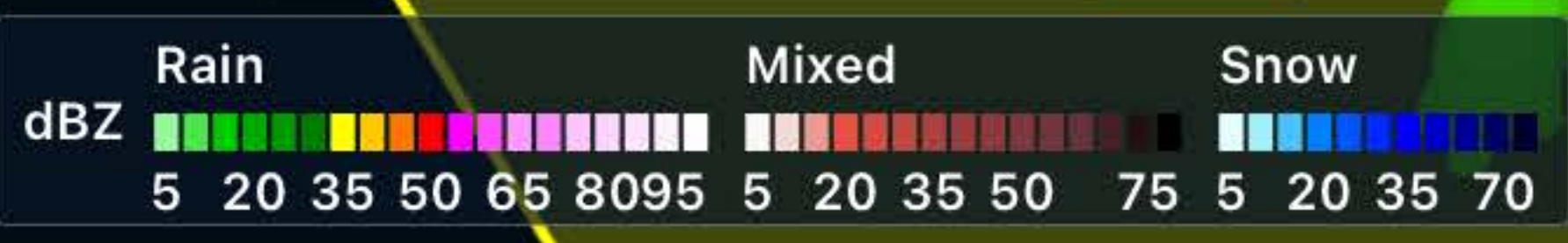
REC

00:00

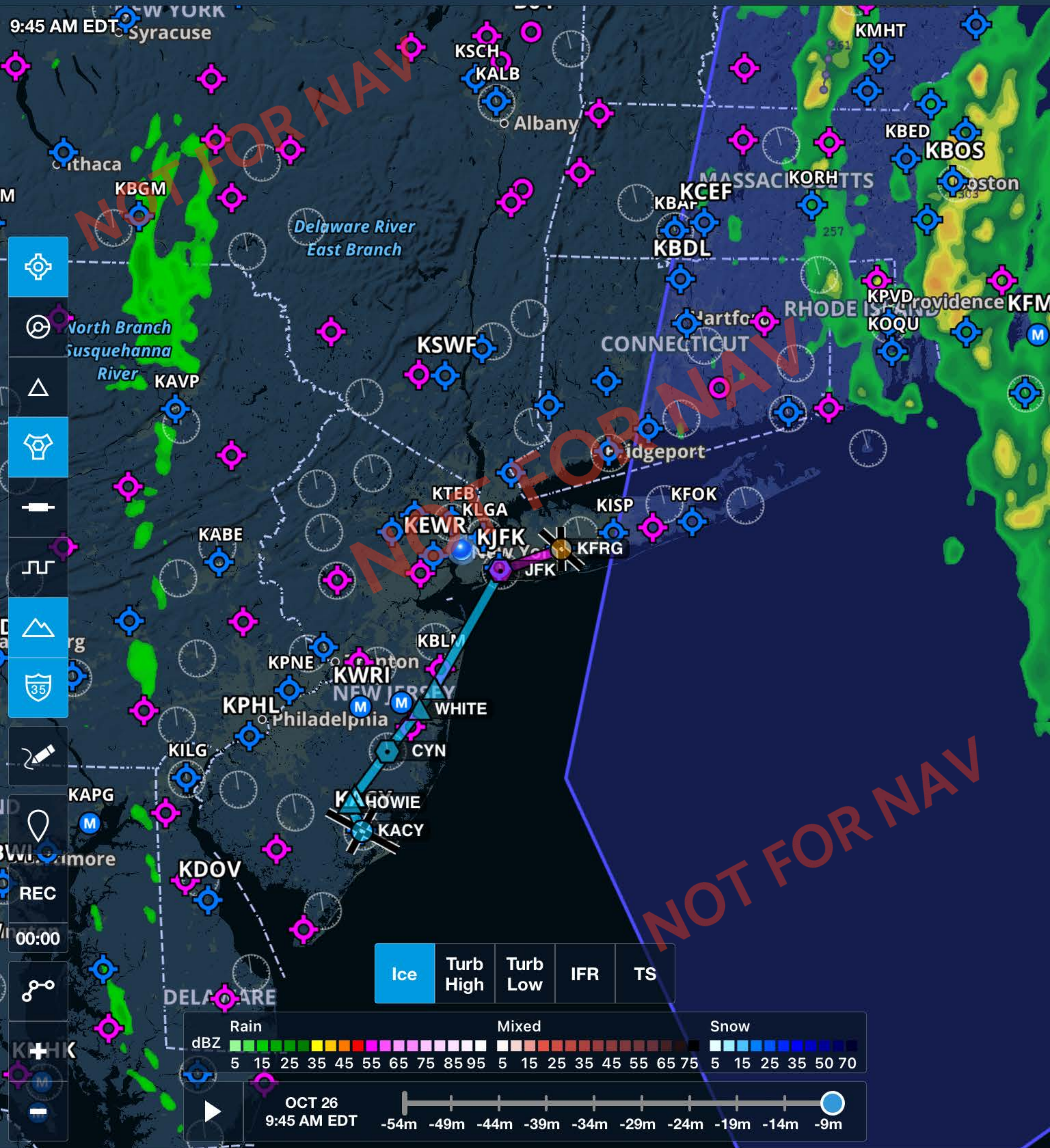
+

-

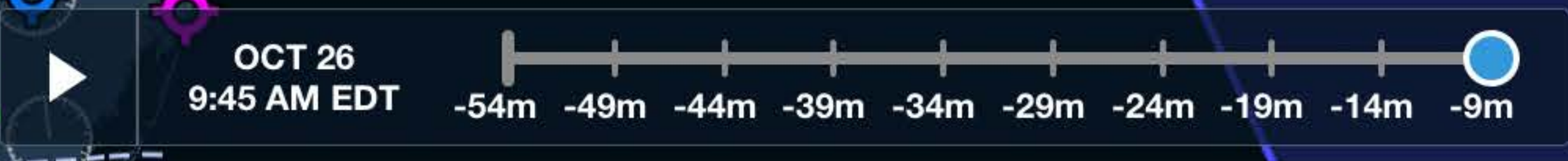
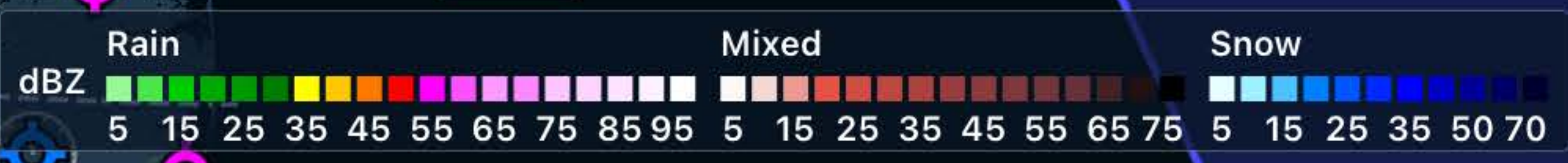
Ice Turb High Turb Low IFR **TS**



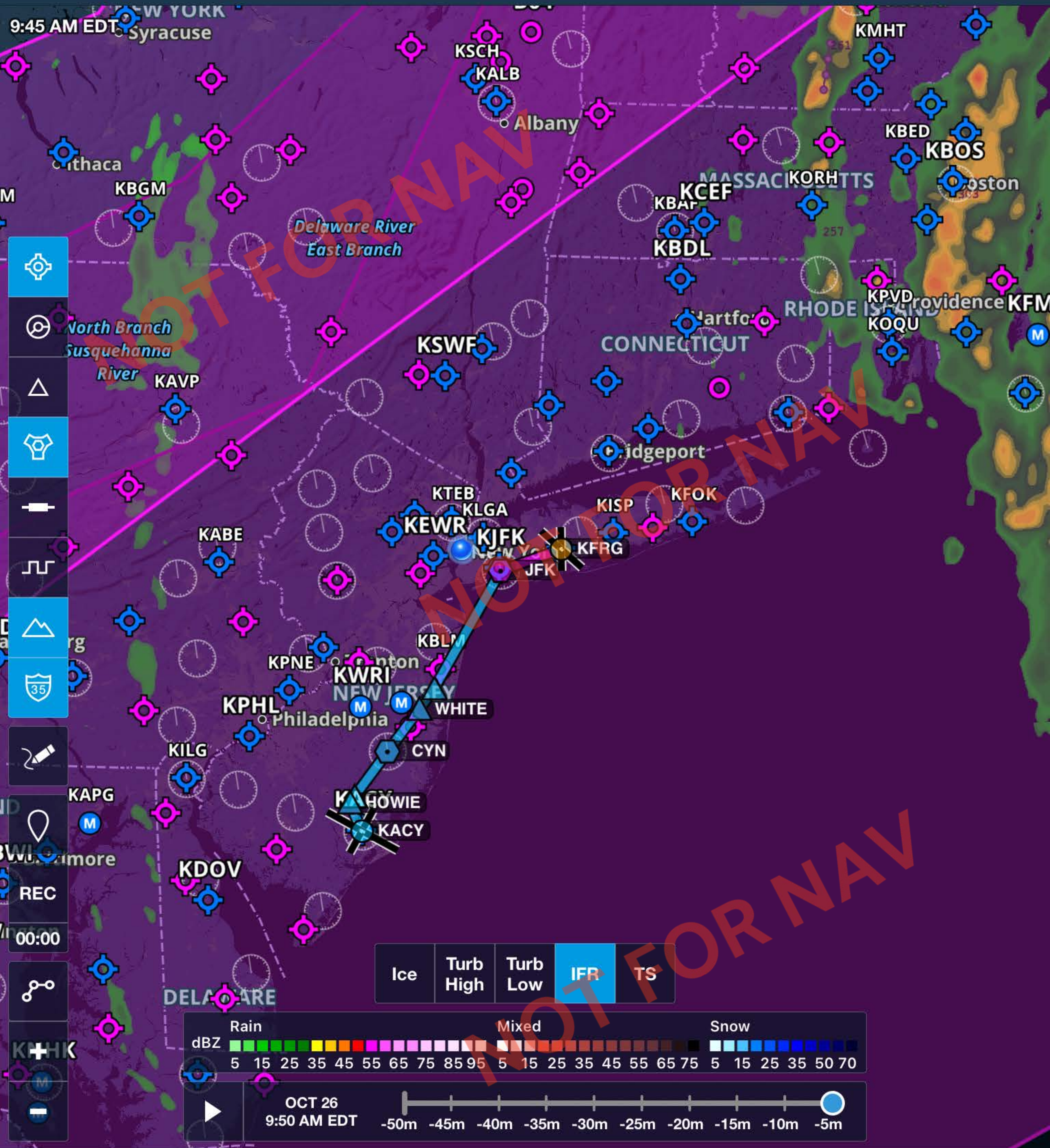
Distance to Next: **35 nm**
 ETE Dest: -----
 Pressure Altitude: -----
 Accuracy: **30 m**
 Track: **80°M**
 Accuracy: **30 m**



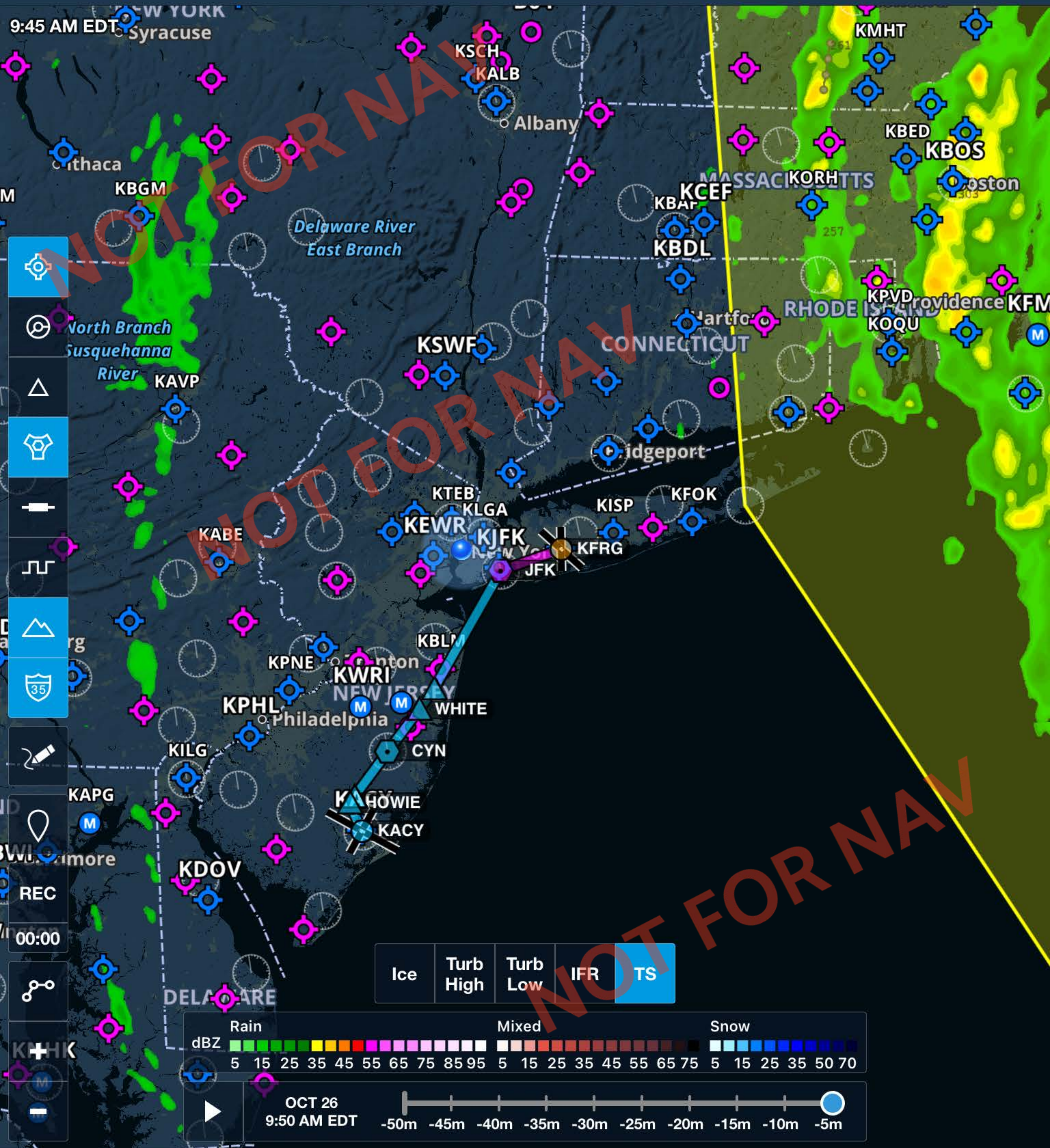
Ice Turb High Turb Low IFR TS



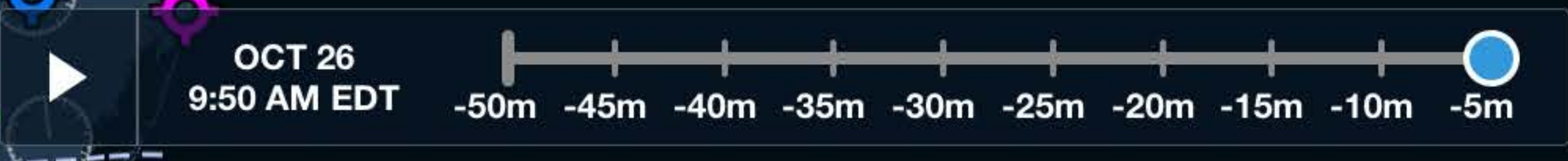
Distance to Next **12 nm** ETE Dest Pressure Altitude Accuracy **10 m** Track Accuracy **10 m**



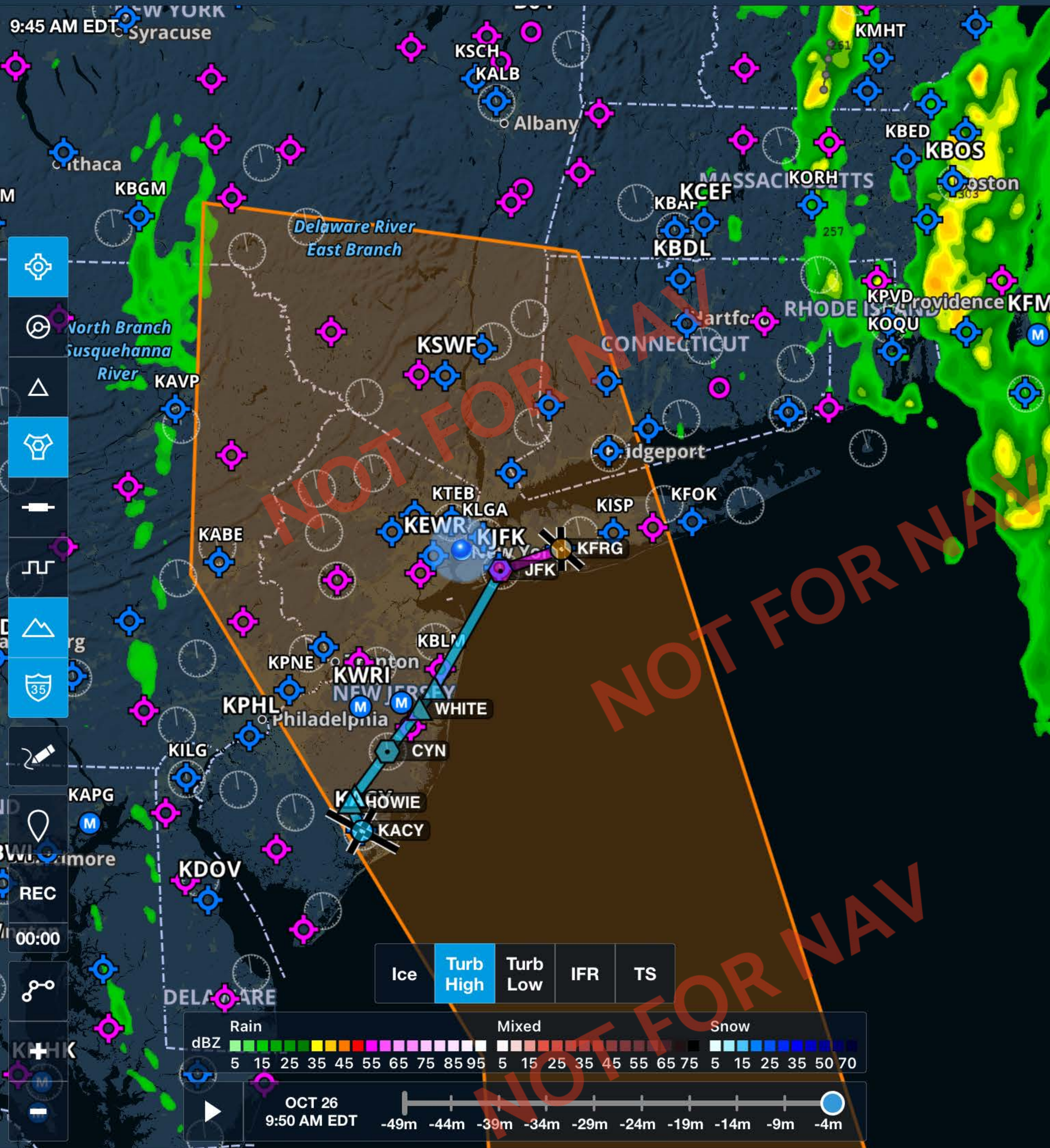
Distance to Next: 12 nm
 ETE Dest: -----
 Pressure Altitude: -----
 Accuracy: 10 m
 Track: -----
 Accuracy: 10 m



Ice Turb High Turb Low IFR **TS**



Distance to Next **12 nm** ETE Dest Pressure Altitude Accuracy **10 m** Track Accuracy **10 m**



Distance to Next: 12 nm

ETE Dest: -----

Pressure Altitude: -----

Accuracy: 10 m

Track: -----

Accuracy: 10 m