

DIST  
152 nm

ETE  
1h24m

ETA  
1509Z

FLIGHT FUEL  
12 g

WIND  
14 kts tail

Calculated a few seconds ago [Refresh](#)

Navlog

Briefing

0 Files

0 New Msg

### OVERVIEW

**ETD** [ETA](#)  
**10/26/2022** **1345Z**

Time (Zulu) **1345Z**

Departure **KFRG** [Takeoff](#) [Info](#)

Destination **KBED** [Landing](#) [Info](#)

Alternate **Optional**

Aircraft **N106ST (C172)**

Performance Profile **Max RPM Lean Mixture ...**

### ROUTE

Route **MERIT HFD.DREEM2.11** [Routes >](#)

Altitude **11,000** [Advisor >](#)

Flight Rules **IFR**

### PAYLOAD

PAYLOAD (LBS)	COUNT	AVG. WT.	TOTAL
Persons	2	200	400
Cargo			0
<b>Total Payload</b>			<b>400</b>

### FUEL

Fuel Policy **Minimum Fuel**

### FUEL ALLOCATION

	LBS	GAL
<b>Start</b> 19 gal available	<b>108</b> /222	<b>18</b> /37
<b>Flight Fuel</b>	73	12
Taxi Fuel	7	1
Fuel to Destination	66	11
<b>Fuel at Landing</b>	35	6
Alternate Fuel	0	0
Reserve Fuel	35	6
Extra Fuel	0	0

### WEIGHTS

WEIGHTS	LBS
<b>Zero Fuel Weight</b> 540 lb available	<b>1,660</b> / 2,200
Total Fuel at Start	108
<b>Ramp Weight</b> 439 lbs available	<b>1,768</b> / 2,207
Taxi/Takeoff Fuel	7
<b>Takeoff Weight</b> 439 lbs available	<b>1,761</b> / 2,200
Fuel to Destination	66
<b>Landing Weight</b> 505 lb available	<b>1,695</b> / 2,200

### DESTINATION SERVICES

FBO **Optional** [Select FBO >](#)

### FLIGHT LOG

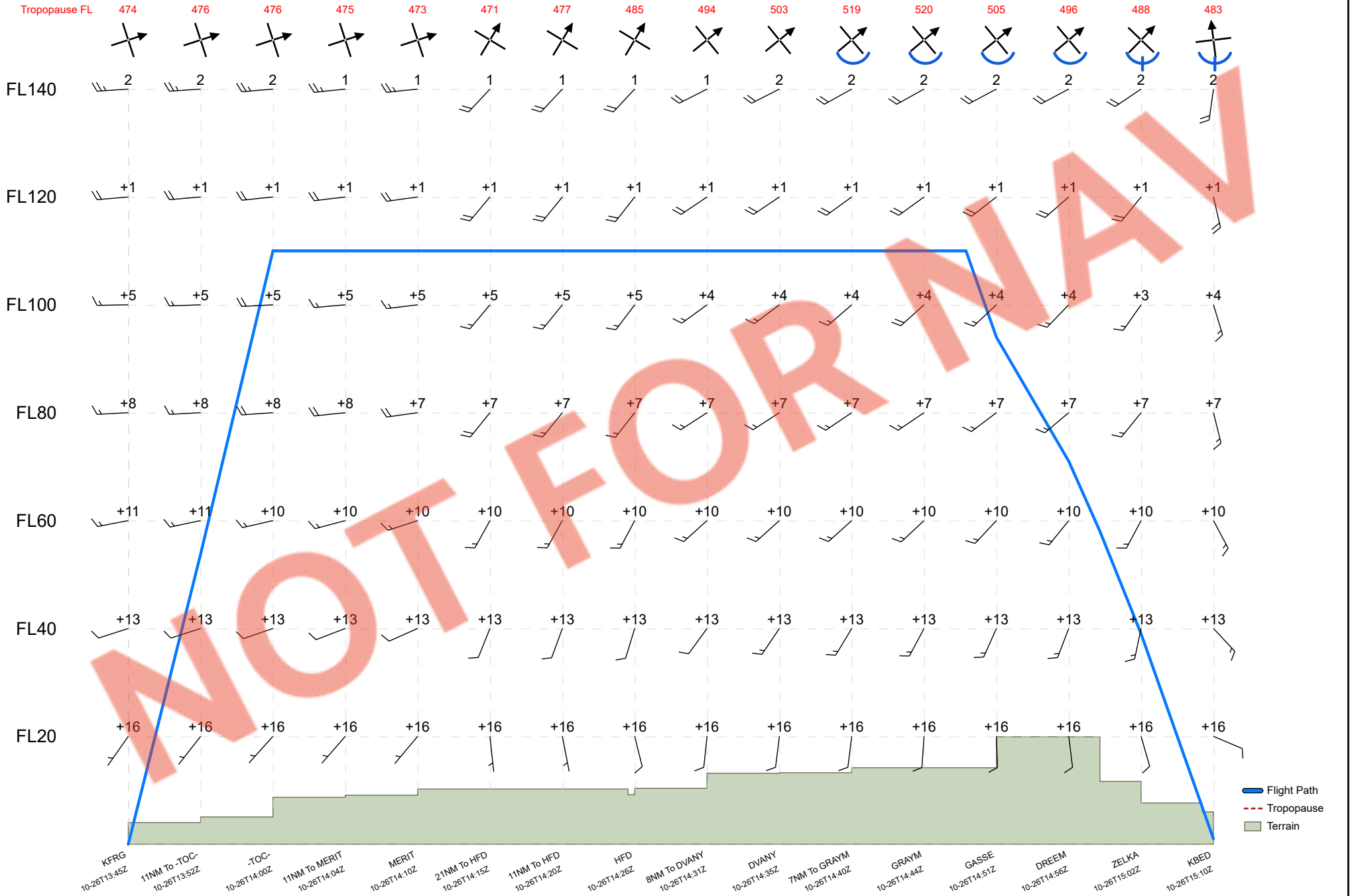
Fuel at Shutdown (g) **0** Times **Optional** [Edit >](#)

# Vertical Cross Section Chart

Data by NCEP

Chart by ForeFlight

Data source: Oct 26 2022 0600Z Time: Oct 26 2022 1334Z



Turbulence EDR: 0.0 < [Color Scale] < 1.0

Icing Severity: [Icing Symbols]

Temperatures are written as degree celsius and are negative if not prefixed with +

# WIND/TEMP/TURB

## FL 110

Data by NCEP

Chart by ForeFlight

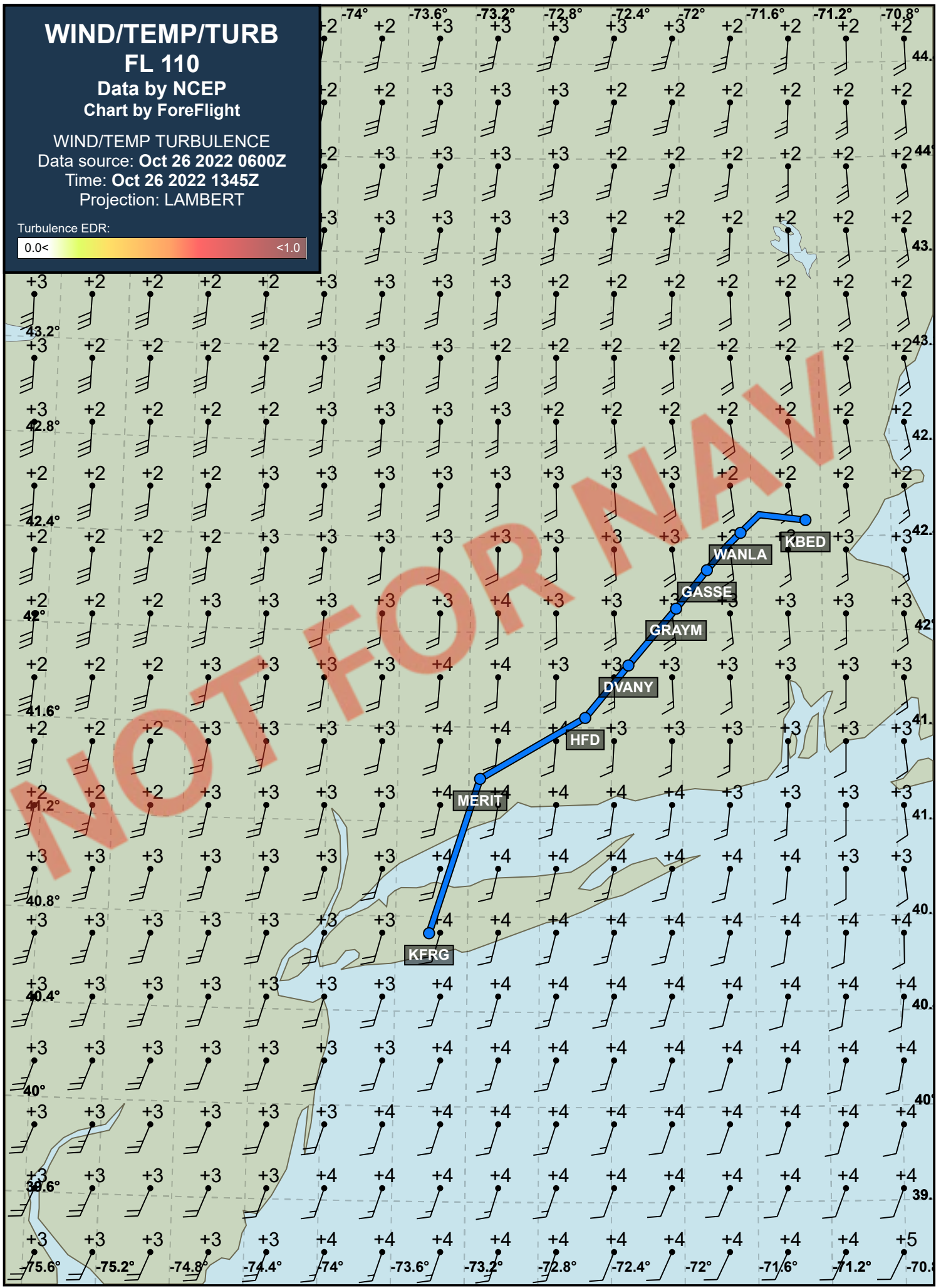
WIND/TEMP TURBULENCE

Data source: Oct 26 2022 0600Z

Time: Oct 26 2022 1345Z

Projection: LAMBERT


Turbulence EDR:



**SIG. WEATHER**  
**FL 250 to 630**  
Data by WAFC LONDON  
Chart by ForeFlight

FIXED TIME PROGNOSTIC CHART  
VALID Oct 26 2022 1200Z

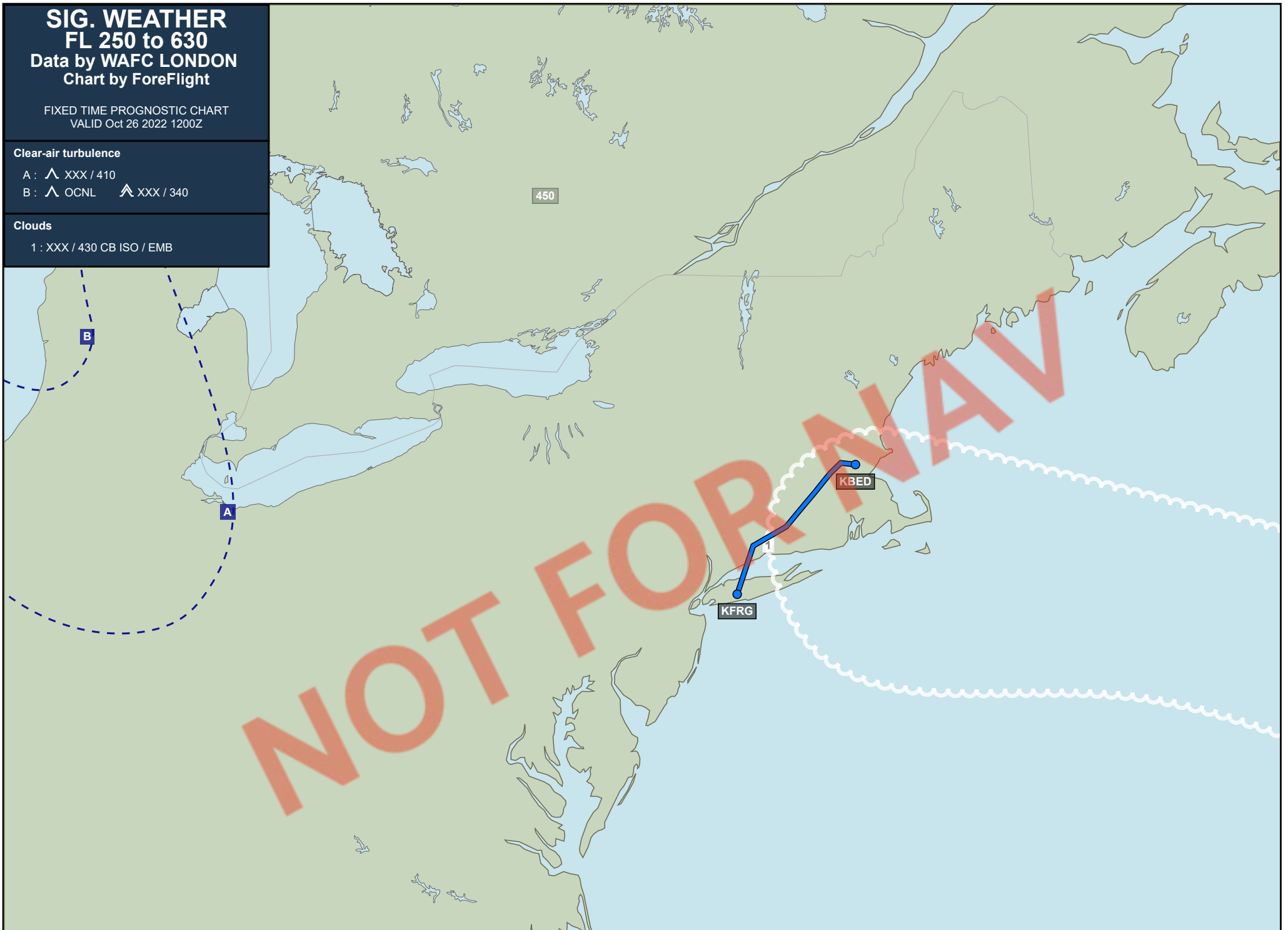
**Clear-air turbulence**

A :  XXX / 410

B :  OCNL  XXX / 340

**Clouds**

1 : XXX / 430 CB ISO / EMB



# METARs / TAFs

## Departure KFRG - Republic

METAR ● METAR KFRG 261253Z 0000KT 10SM OVC004 18/18 A2986 RMK AO2 SLP110 T01830178  
TAF ● **KISP 261326Z 2613/2712 VRB04KT 3/4SM BR OVC002**  
● **TEMPO 2613/2614 1/4SM FG**  
● FM261500 VRB04KT 1SM BR OVC004  
● FM261700 19005KT 2SM BR VCSH OVC008  
● FM262200 22005KT 3SM BR VCSH BKN015 OVC030  
● TEMPO 2622/2701 1SM BR  
● FM270300 23004KT 6SM BR BKN025  
● FM270500 VRB04KT P6SM FEW025 SCT100  
● FM270900 31007KT P6SM FEW100

## Destination KBED - Laurence G Hanscom Field

METAR ● 261251Z 0000KT 1/4SM R11/1600FT FG VV003 17/16 A2989 RMK AO2 SLP134 T01670161  
TAF ● 261120Z 2612/2712 0000KT 1/4SM -DZ FG VCSH OVC002  
● **FM261400 05003KT 3/4SM -SHRA BR OVC002**  
● FM261600 0000KT 1/2SM -SHRA FG OVC003  
● FM270200 0000KT 1 1/2SM BR OVC003  
● FM270400 21003KT 2SM BR BKN007  
● FM271000 25005KT 5SM BR SCT090

## Enroute airport KBDR - Bridgeport/Sikorsky

METAR ● METAR KBDR 261252Z 08006KT 1/2SM -RA BR BKN004 OVC020 17/17 A2986 RMK AO2 RAB33 SLP110 P0002 T01720172  
TAF ● 261139Z 2612/2712 05005KT 1SM BR OVC004  
● TEMPO 2612/2614 1/2SM FG  
● FM261500 08005KT 3/4SM BR VCSH OVC004  
● FM261700 VRB05KT 2SM BR VCSH OVC008  
● FM262200 22004KT 3SM BR VCSH OVC015  
● TEMPO 2622/2701 1SM BR  
● FM270300 24007KT 6SM BR BKN020  
● FM270500 28006KT P6SM FEW030 SCT090  
● FM270900 31009KT P6SM FEW100

## Enroute airport KOXC - Waterbury-Oxford

METAR ● SPECI KOXC 261316Z 0000KT 3/4SM BR OVC003 18/18 A2988 RMK AO2 P0001  
TAF ● KBDR 261139Z 2612/2712 05005KT 1SM BR OVC004  
● TEMPO 2612/2614 1/2SM FG  
● FM261500 08005KT 3/4SM BR VCSH OVC004  
● FM261700 VRB05KT 2SM BR VCSH OVC008  
● FM262200 22004KT 3SM BR VCSH OVC015  
● TEMPO 2622/2701 1SM BR  
● FM270300 24007KT 6SM BR BKN020  
● FM270500 28006KT P6SM FEW030 SCT090  
● FM270900 31009KT P6SM FEW100

## Enroute airport KMMK - Meriden Markham Municipal

METAR ● METAR KMMK 261253Z AUTO 0000KT 10SM OVC004 18/17 A2987 RMK AO2 SLP112 T01830172  
TAF ● KBDR 261139Z 2612/2712 05005KT 1SM BR OVC004  
● TEMPO 2612/2614 1/2SM FG  
● FM261500 08005KT 3/4SM BR VCSH OVC004  
● FM261700 VRB05KT 2SM BR VCSH OVC008  
● FM262200 22004KT 3SM BR VCSH OVC015  
● TEMPO 2622/2701 1SM BR  
● FM270300 24007KT 6SM BR BKN020  
● FM270500 28006KT P6SM FEW030 SCT090  
● FM270900 31009KT P6SM FEW100

**Enroute airport KHFD - Hartford-Brainard**

METAR ● METAR KHFD 261253Z 01005KT 10SM OVC004 19/18 A2986 RMK AO2 SLP112 T01890178  
 TAF ● KBDL 261120Z 2612/2718 00000KT 2SM -DZ BR VCSH OVC004  
 ● FM261500 00000KT 2SM BR VCSH OVC005  
 ● FM262300 22003KT P6SM OVC011  
 ● FM270300 22005KT P6SM OVC021  
 ● FM270400 23005KT P6SM BKN040  
 ● FM271200 32010G17KT P6SM SCT090

**Enroute airport KIJD - Windham**

METAR ● METAR KIJD 261252Z AUTO 36003KT 10SM OVC004 18/18 A2988 RMK AO2 SLP115 T01780178  
 TAF ● KBDL 261120Z 2612/2718 00000KT 2SM -DZ BR VCSH OVC004  
 ● FM261500 00000KT 2SM BR VCSH OVC005  
 ● FM262300 22003KT P6SM OVC011  
 ● FM270300 22005KT P6SM OVC021  
 ● FM270400 23005KT P6SM BKN040  
 ● FM271200 32010G17KT P6SM SCT090

**Enroute airport KORH - Worcester Regional**

METAR ● 261306Z 06004KT 3/4SM R11/P6000FT RA BR VV006 16/16 A2990  
 TAF ● 261120Z 2612/2712 06005KT 1/2SM -SHRADZ FG OVC002  
 ● FM261400 06004KT 1/4SM FG VCSH OVC002  
 ● FM261700 00000KT 3/4SM BR VCSH OVC003  
 ● FM262200 26003KT 1SM BR VCSH OVC003  
 ● FM270300 24008KT 3SM BR OVC004  
 ● FM270800 27009KT 2SM BR SCT011

**Enroute airport KFIT - Fitchburg Municipal**

METAR ● 261328Z AUTO 00000KT 5SM BR BKN007 OVC012 16/15 A2991 RMK AO2 RAE20 P0004 T01610150  
 TAF ● KORH 261120Z 2612/2712 06005KT 1/2SM -SHRADZ FG OVC002  
 ● FM261400 06004KT 1/4SM FG VCSH OVC002  
 ● FM261700 00000KT 3/4SM BR VCSH OVC003  
 ● FM262200 26003KT 1SM BR VCSH OVC003  
 ● FM270300 24008KT 3SM BR OVC004  
 ● FM270800 27009KT 2SM BR SCT011

# SIGMETs

**East U.S.****CONVECTIVE SIGMET**

WSUS31 KPCI 261255  
 SIGE  
 ?MKCE WST 261255  
 CONVECTIVE SIGMET 13E  
 VALID UNTIL 1455Z  
 FL CSTL WTRS  
 FROM 90WSW CTY-70WNW PIE-90W PIE-150SSW TLH-90WSW CTY  
 AREA EMBD TS MOV FROM 27035KT. TOPS TO FL420.  
 OUTLOOK VALID 261455-261855  
 AREA 1...FROM MPV-140SE BGR-190SE ACK-190S ACK-HTO-MPV  
 WST ISSUANCES POSS. REFER TO MOST RECENT ACUS01 KWNS FROM STORM  
 PREDICTION CENTER FOR SYNOPSIS AND METEOROLOGICAL DETAILS.  
 AREA 2...FROM AMG-60SSE SAV-SRQ-190WSW PIE-CEW-AMG  
 WST ISSUANCES POSS. REFER TO MOST RECENT ACUS01 KWNS FROM STORM  
 PREDICTION CENTER FOR SYNOPSIS AND METEOROLOGICAL DETAILS.

No SIGMET found for KZNY, KZBW

# NOTAMs

## NOTAMs have been filtered using the following criteria:

Filtered NOTAMs not active during this flight

Filtered all non-oceanic ARTCC NOTAMs

## Recent NOTAMs (added or edited within 12 hours) KFRG - Republic

No NOTAMs have been submitted for KFRG within the last 12 hours

## Departure KFRG - Republic

### RUNWAY

FRG 10/058 FRG RWY 19 FICON 5/5/5 100 PCT WET OBS AT 2210252341. 2210252341-2210262341

FRG 10/057 FRG RWY 14 FICON 5/5/5 100 PCT WET OBS AT 2210252340. 2210252340-2210262340

FRG 10/021 FRG RWY 19 PAPI BEYOND 4DEG LEFT OF RCL UNUSABLE 2110111840-PERM

### TAXIWAY

FRG 10/059 FRG TWY ALL FICON WET OBS AT 2210252341. 2210252341-2210262341

### AERODROME

FRG 01/075 FRG AD AP RDO ALTIMETER UNREL. AUTOLAND, HUD TO TOUCHDOWN, ENHANCED FLT VISION SYSTEMS TO TOUCHDOWN, HEL OPS REQUIRING RDO ALTIMETER DATA TO INCLUDE HOVER AUTOPILOT MODES AND CAT A/B/PERFORMANCE CLASS TKOF AND LDG NOT AUTHORIZED EXC FOR ACFT USING APPROVED ALTERNATIVE METHODS OF COMPLIANCE DUE TO 5G C-BAND INTERFERENCE PLUS SEE AIRWORTHINESS DIRECTIVES 2021-23-12, 2021-23-13 2201190501-2401190501

### OBSTRUCTION

FRG 10/055 FRG OBST TOWER LGT (ASR 1065572) 404303.00N0732004.00W (3.6NM E FRG) 288.1FT (265.1FT AGL) **u/s** 2210241149-2211081049

### APRON

FRG 10/060 FRG APRON ALL FICON WET OBS AT 2210252342. 2210252342-2210262342

### STANDARD INSTRUMENT PROCEDURE

FDC 2/9553 FRG SID REPUBLIC, FARMINGDALE, NY. REPUBLIC ONE DEPARTURE... COATE DEPARTURES: NA EXCEPT FOR AIRCRAFT EQUIPPED WITH SUITABLE RNAV SYSTEM WITH GPS, SAX VORTAC OUT OF SERVICE. 2209191420-2305011420EST

### STANDARD TERMINAL ARRIVAL ROUTE

FDC 2/8716 FRG STAR REPUBLIC AIRPORT, FARMINGDALE, NY LENDY SEVEN ARRIVAL... DISREGARD EXPECT HARTY AT FL210. SHOULD READ EXPECT JENNO AT FL230 2203241300-2212312359

FDC 2/1225 FRG STAR REPUBLIC AIRPORT, FARMINGDALE, NY LENDY ARRIVAL... UNUSABLE BLW 4000FT 2201060000-2301052359

### INSTRUMENT APPROACH PROCEDURE

FDC 2/7038 FRG IAP REPUBLIC, FARMINGDALE, NY. RNAV (GPS) Y RWY 14, AMDT 2E... LNAV/VNAV DA 443/HAT 366 ALL CATS. EXCEPT WHEN ADVISED BY ATCT THAT THIS CRANE IS DOWN. TEMPORARY CRANE 232FT MSL 4338FT W OF RWY 14 (2020-AEA-12862-OE). 2210031247-2212091247EST

FDC 2/7039 FRG IAP REPUBLIC, FARMINGDALE, NY. RNAV (RNP) Z RWY 14, ORIG-B... RNP 0.30 DA 557/HAT 480 ALL CATS. VISIBILITY ALL CATS 1 1/8. EXCEPT WHEN ADVISED BY ATCT THAT THIS CRANE IS DOWN. TEMPORARY CRANE 232FT MSL 4338FT W OF RWY 14 (2020-AEA-12862-OE). 2210031247-2212091247EST

## Recent NOTAMs (added or edited within 12 hours) KBED - Laurence G Hanscom Field

### STANDARD INSTRUMENT PROCEDURE

FDC 2/9903 BED SID LAURENCE G HANSCOM FLD, BEDFORD, MA. HANSCOM FOUR DEPARTURE... DEPARTURE PROCEDURE CELTK DEPARTURES: DME REQUIRED EXCEPT FOR ACFT EQUIPPED WITH SUITABLE RNAV SYSTEM WITH GPS, LFV VOR/DME OUT OF SERVICE. 2210261500-2211021900EST

FDC 2/9872 BED SID LAURENCE G HANSCOM FLD, BEDFORD, MA. HANSCOM FOUR DEPARTURE... NOTE: SSOXS DEPARTURE DME REQUIRED EXCEPT FOR AIRCRAFT EQUIPPED WITH SUITABLE RNAV SYSTEM WITH GPS, PVD VOR/DME OUT OF SERVICE. 2210261300-2211022152EST

## Destination KBED - Laurence G Hanscom Field

### RUNWAY

BED 10/008 BED RWY 11 RAI LGT **u/s** 2210121228-2210312000EST

### TAXIWAY

BED 10/019 BED TWY M LEAD ON MARKING AT PINE HILL HANGARS RAMP NOT STD 2210181632-2306302200

BED 10/020 BED TWY M LEAD OFF MARKING AT PINE HILL HANGARS RAMP NOT STD 2210181632-2306302200

### AERODROME

BED 01/132 BED AD AP RDO ALTIMETER UNREL. AUTOLAND, HUD TO TOUCHDOWN, ENHANCED FLT VISION SYSTEMS TO TOUCHDOWN, HEL OPS REQUIRING RDO ALTIMETER DATA TO INCLUDE HOVER AUTOPILOT MODES AND CAT A/B/PERFORMANCE CLASS TKOF AND LDG NOT AUTHORIZED EXC FOR ACFT USING APPROVED ALTERNATIVE METHODS OF COMPLIANCE DUE TO 5G C-BAND INTERFERENCE PLUS SEE AIRWORTHINESS DIRECTIVES 2021-23-12, 2021-23-13 2201190501-2401190501

### OBSTRUCTION

BED 10/013 BED OBST TOWER LGT (ASR 1236522) 422645.20N0711908.30W (2.0NM SW BED) 313.0FT (87.9FT AGL) **u/s** 2210161435-2301140400

### APRON

BED 05/010 BED APRON PINE HILL T HANGAR RAMP **CLSD** EXC E SID OF G, J ROWS 2205122010-2212012200

**OBSTACLE DEPARTURE PROCEDURE**

FDC 2/5165 BED ODP LAURENCE G HANSCOM FLD, BEDFORD, MA. TAKEOFF MINIMUMS AND (OBSTACLE)  
DEPARTURE PROCEDURES AMDT 6A... ADD TAKEOFF OBSTACLE NOTE: RWY 11, TEMPORARY CRANE  
3185FT FROM DER, 1228FT LEFT OF CENTERLINE, 130FT AGL/ 251FT MSL (2021-ANE-5498-OE). ALL  
OTHER DATA REMAINS AS PUBLISHED. 2210171502-2211051502EST

**INSTRUMENT APPROACH PROCEDURE**

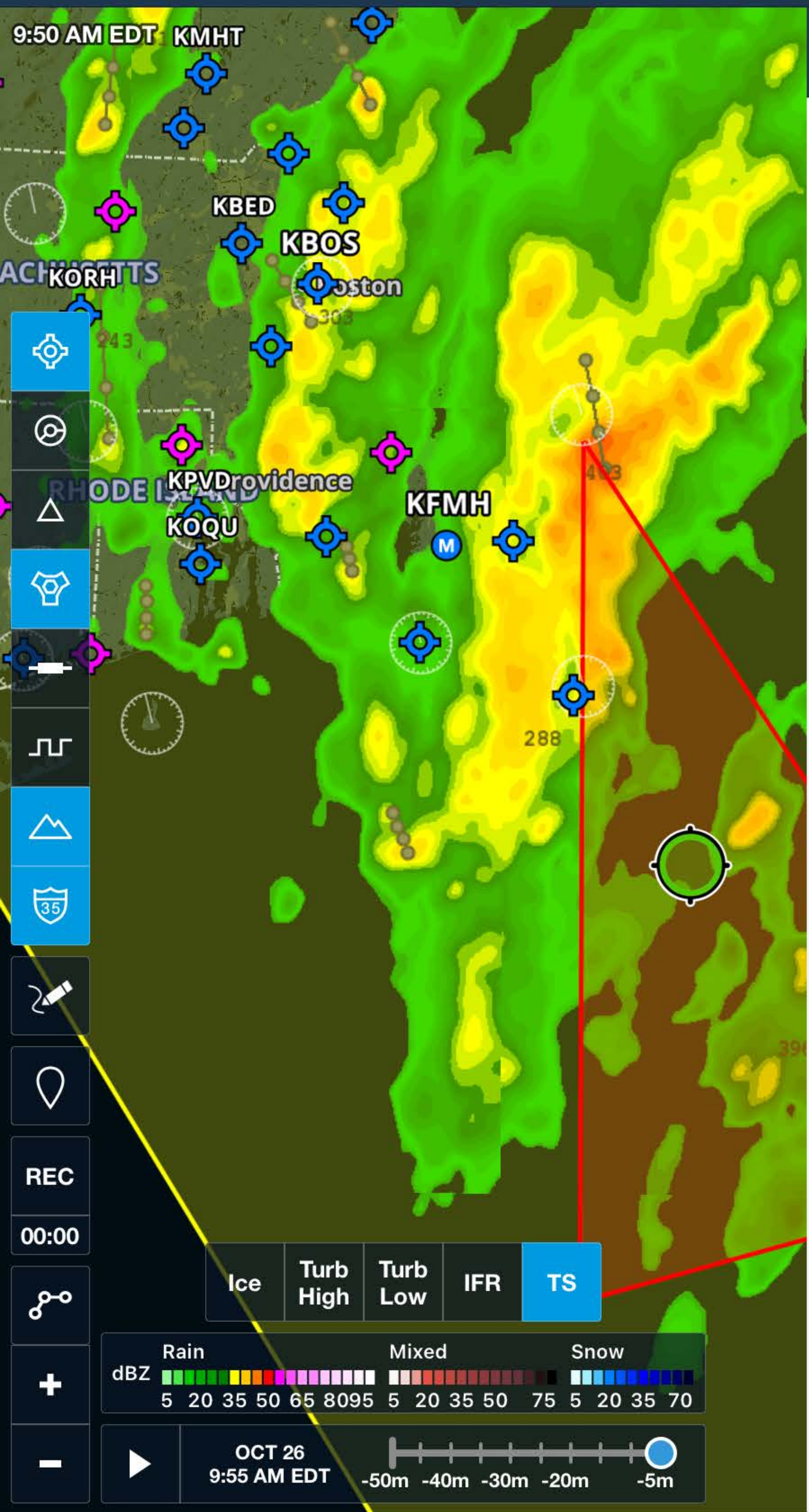
FDC 2/3511 BED IAP LAURENCE G HANSCOM FLD, BEDFORD, MA. RNAV (GPS) RWY 23, AMDT 1A...  
LNAV MDA 660/HAT 532 ALL CATS, VISIBILITY CATS C/D 1 1/2. TOWER 391 MSL 2.83NM NE OF RWY  
23 (2022-ANE-2542-OE PERMANENT). 2209081223-2409081223EST

**Enroute navigation NOTAMS**

**NAVIGATION**

BUF 10/177 GGT NAV TACAN **U/S** 2210260504-2210282000EST  
HFD 10/010 HFD NAV LOC TYPE DIRECTIONAL AID RWY 02 LOC **U/S** 2210260415-2210282000EST  
ORH 08/011 ORH NAV ILS RWY 29 DME **U/S** 2208101301-2304192000EST  
ORH 08/010 ORH NAV ILS RWY 11 DME **U/S** 2208101300-2304192000EST  
BAF 10/030 BAF NAV VORTAC **U/S** 2210261200-2210262000  
JFK 10/197 JFK NAV VOR/DME **U/S** 2210241100-2211071100  
JFK 10/261 JFK NAV ILS RWY 04L GP **U/S** 2210231105-2210262359  
OWD 10/003 OWD NAV ILS RWY 35 LOC/DME **U/S** 2210111100-2211102000  
ISP 10/086 CMK NAV VOR **U/S** 2210071300-2310022000EST  
BAF 09/016 BAF NAV TACAN AZM **U/S** 2209261421-2210312000EST  
MHT 08/076 MHT NAV ILS RWY 35 DME UNUSABLE BEYOND 30 DEG LEFT OF COURSE 2208261204-PERM  
HPN 03/050 HPN NAV ILS RWY 16 NOT MNT DLY 0300-1000 2203140300-2211051000  
HPN 03/051 HPN NAV ILS RWY 34 NOT MNT DLY 0300-1000 2203140300-2211051000  
HPN 03/052 HPN NAV ILS RWY 16 SPECIAL AUTH CAT II NA DLY 0300-1000 2203140300-2211051000

NOT FOR NAV



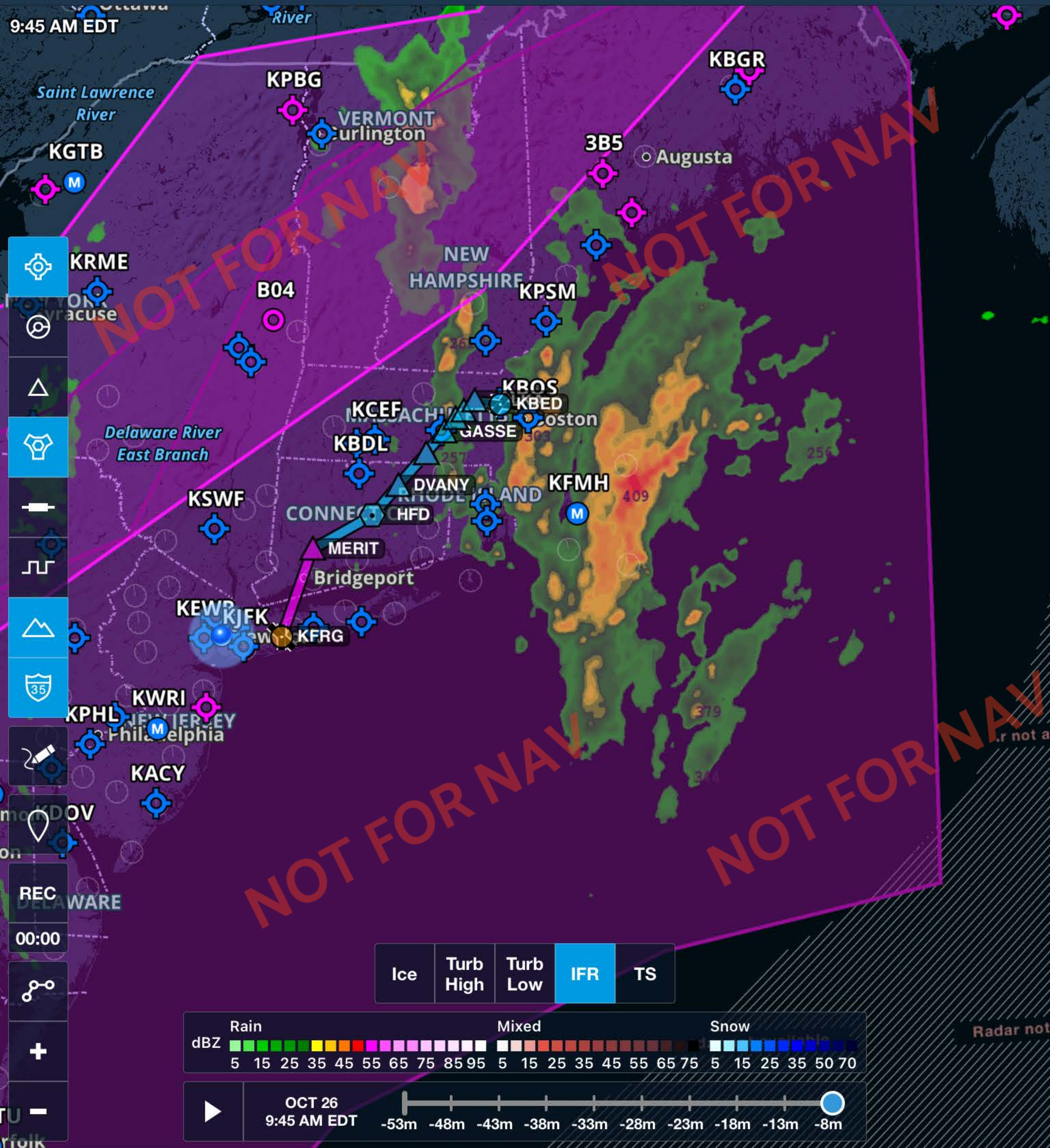
Close Map Info

- Convective**  
Oct 26, 9:55 AM - 11:55 AM EDT  
Active, Surface - 40,000' MSL
- Convective**  
Oct 26, 11:55 AM - 3:55 PM EDT  
Outlook

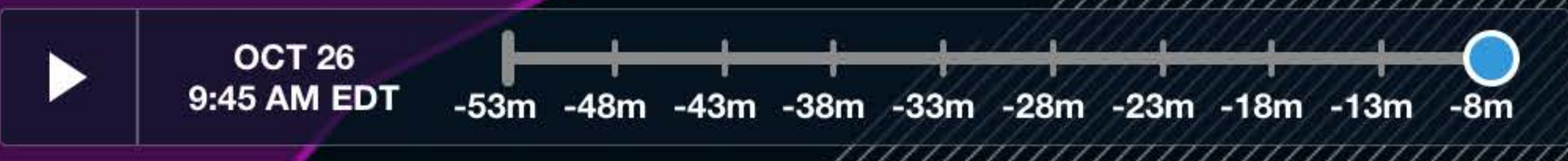
NOT FOR NAV

Distance to Next: **35 nm**    ETE Dest: -----    Pressure Altitude: -----    Accuracy: **30 m**    Track: **80°M**    Accuracy: **30 m**

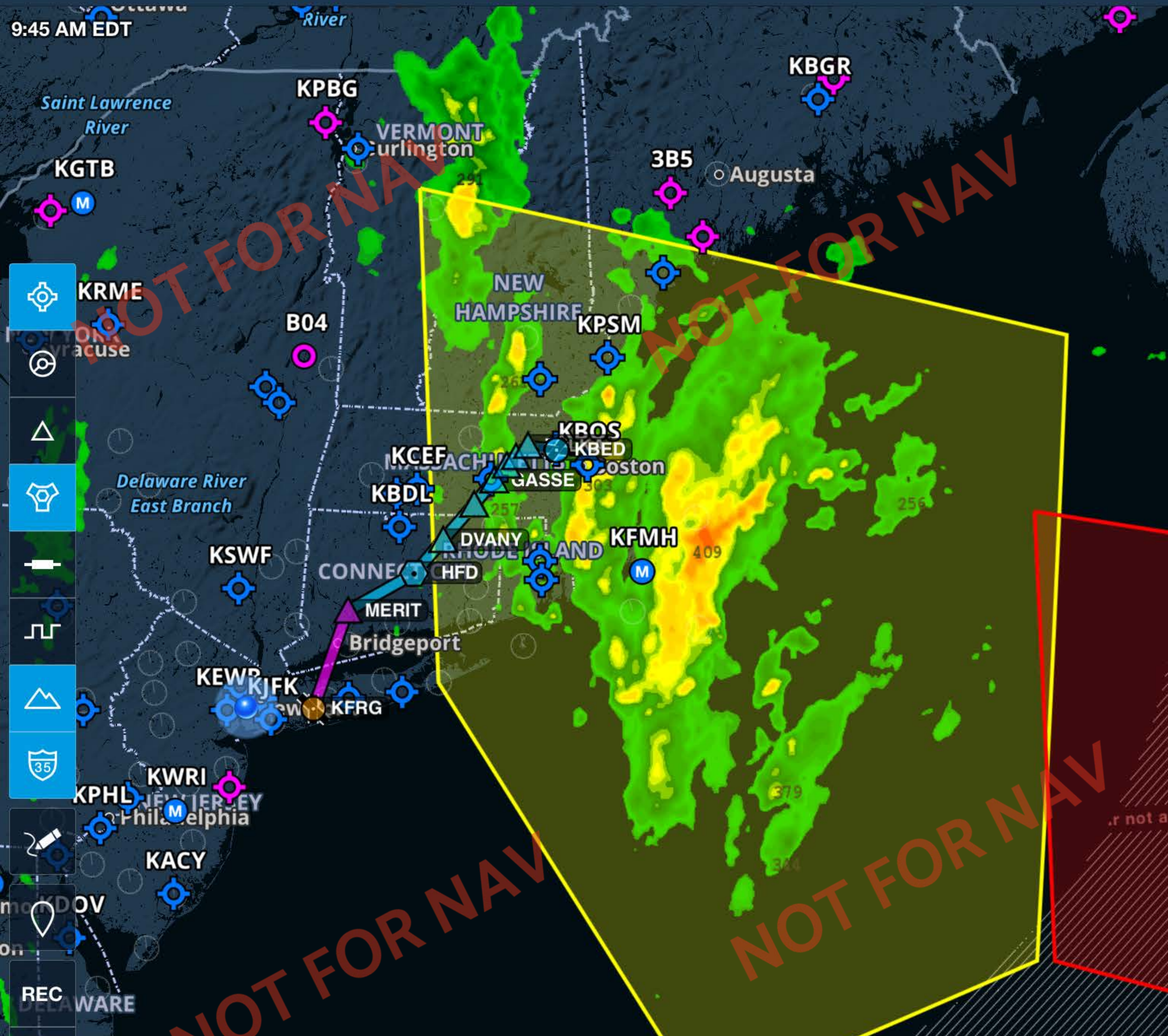




Ice Turb High Turb Low **IFR** TS

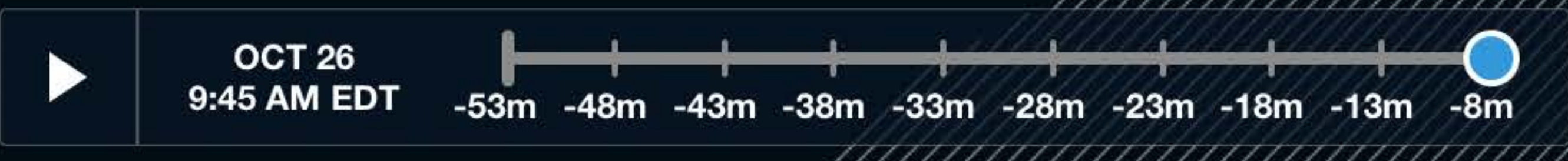
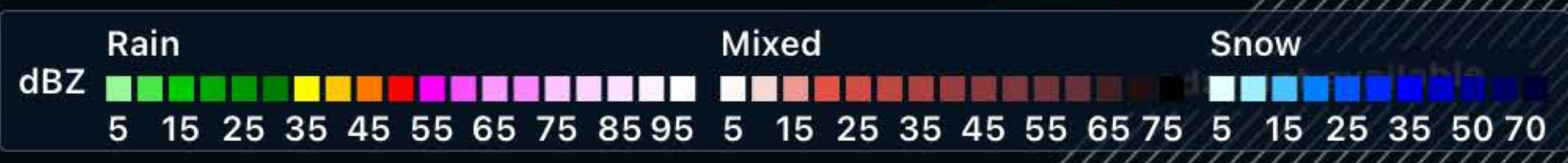


Distance to Next **56 nm** ETE Dest Pressure Altitude Accuracy **10 m** Track Accuracy **10 m**



- Map navigation icons: Home, Location, Layers, Settings, etc.
- REC 00:00
- Map zoom in (+) and zoom out (-) buttons.

Ice Turb High Turb Low IFR **TS**



Distance to Next: **56 nm**     ETE Dest: -----     Pressure Altitude: -----     Accuracy: **10 m**     Track: -----     Accuracy: **10 m**

