

DIST
149 nm

ETE
1h17m

ETA
1507Z

FLIGHT FUEL
12 g

WIND
17 kts tail

Calculated a few seconds ago [Refresh](#)

Navlog

Briefing

0 Files

0 New Msg

OVERVIEW

ETD ETA
10/26/2022

Time (Zulu)
1350Z

Departure
KFRG [Takeoff](#) [Info](#)

Destination
KMVY [Landing](#) [Info](#)

Alternate
Optional

Aircraft
N106ST (C172)

Performance Profile
Max RPM Lean Mixture ...

ROUTE

Route
BAYYS SEALL V188 GON V374 MVY

[Routes >](#)

Altitude
9,000

[Advisor >](#)

Flight Rules
IFR

PAYLOAD

PAYLOAD (LBS)	COUNT	AVG. WT.	TOTAL
Persons	2	200	400
Cargo			0
Total Payload			400

FUEL

Fuel Policy
Minimum Fuel

FUEL ALLOCATION

	LBS	GAL
Start 19 gal available	105 /222	18 /37
Flight Fuel	70	12
Taxi Fuel	7	1
Fuel to Destination	63	11
Fuel at Landing	35	6
Alternate Fuel	0	0
Reserve Fuel	35	6
Extra Fuel	0	0

WEIGHTS

WEIGHTS	LBS
Zero Fuel Weight 540 lb available	1,660 / 2,200
Total Fuel at Start	106
Ramp Weight 441 lbs available	1,766 / 2,207
Taxi/Takeoff Fuel	7
Takeoff Weight 441 lbs available	1,759 / 2,200
Fuel to Destination	64
Landing Weight 505 lb available	1,695 / 2,200

DESTINATION SERVICES

FBO
Optional [Select FBO >](#)

FLIGHT LOG

Fuel at Shutdown (g) Times
0 Optional [Edit >](#)

Vertical Cross Section Chart

Data by NCEP

Chart by ForeFlight

Data source: Oct 26 2022 0600Z Time: Oct 26 2022 1337Z



Turbulence EDR: 0.0 < [color scale] < 1.0

Icing Severity: [symbols]

Temperatures are written as degree celsius and are negative if not prefixed with +

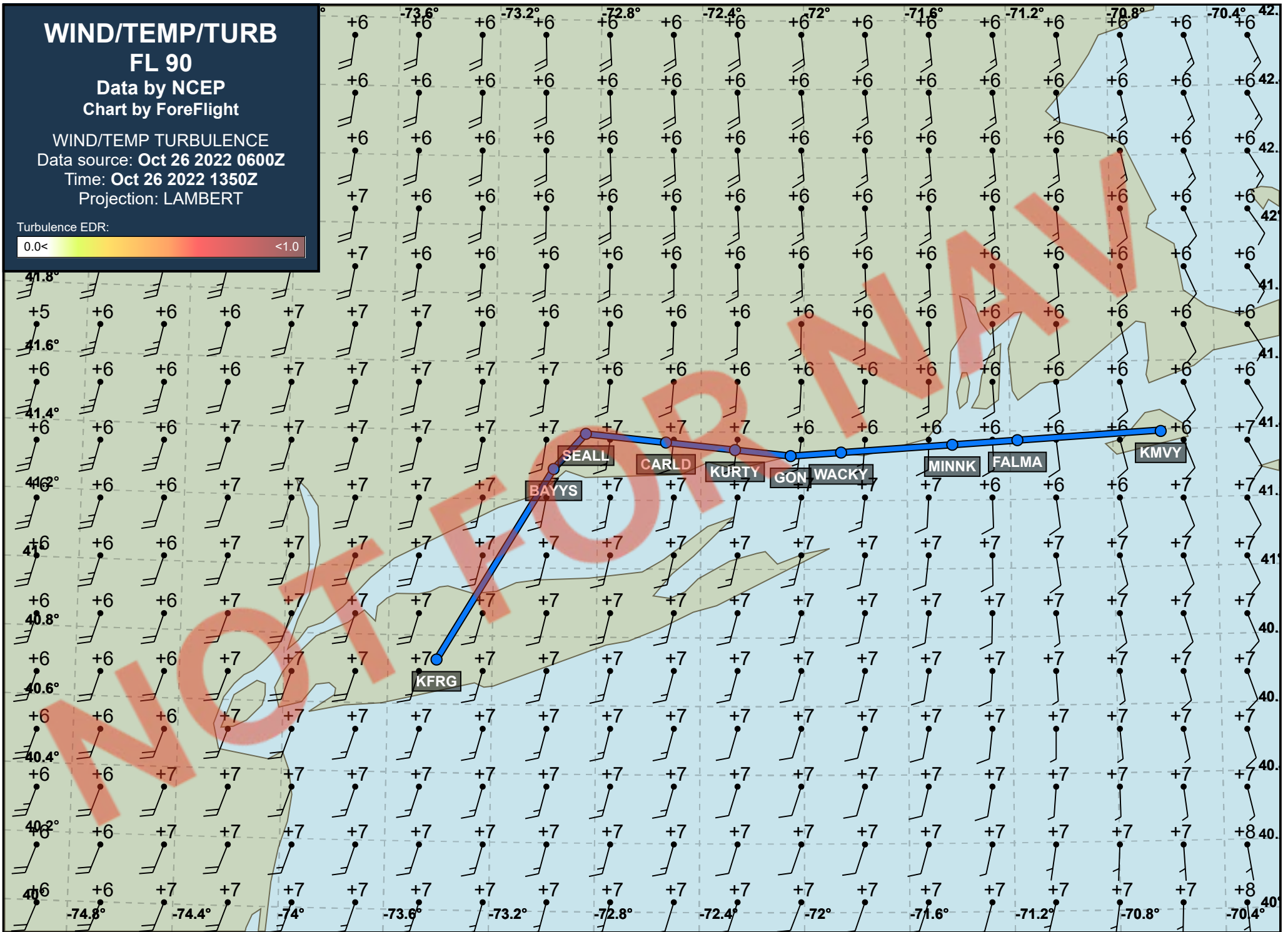
WIND/TEMP/TURB

FL 90

Data by NCEP
Chart by ForeFlight

WIND/TEMP TURBULENCE
Data source: Oct 26 2022 0600Z
Time: Oct 26 2022 1350Z
Projection: LAMBERT


Turbulence EDR:



SIG. WEATHER
FL 250 to 630
Data by WAFC LONDON
Chart by ForeFlight

FIXED TIME PROGNOSTIC CHART
VALID Oct 26 2022 1200Z

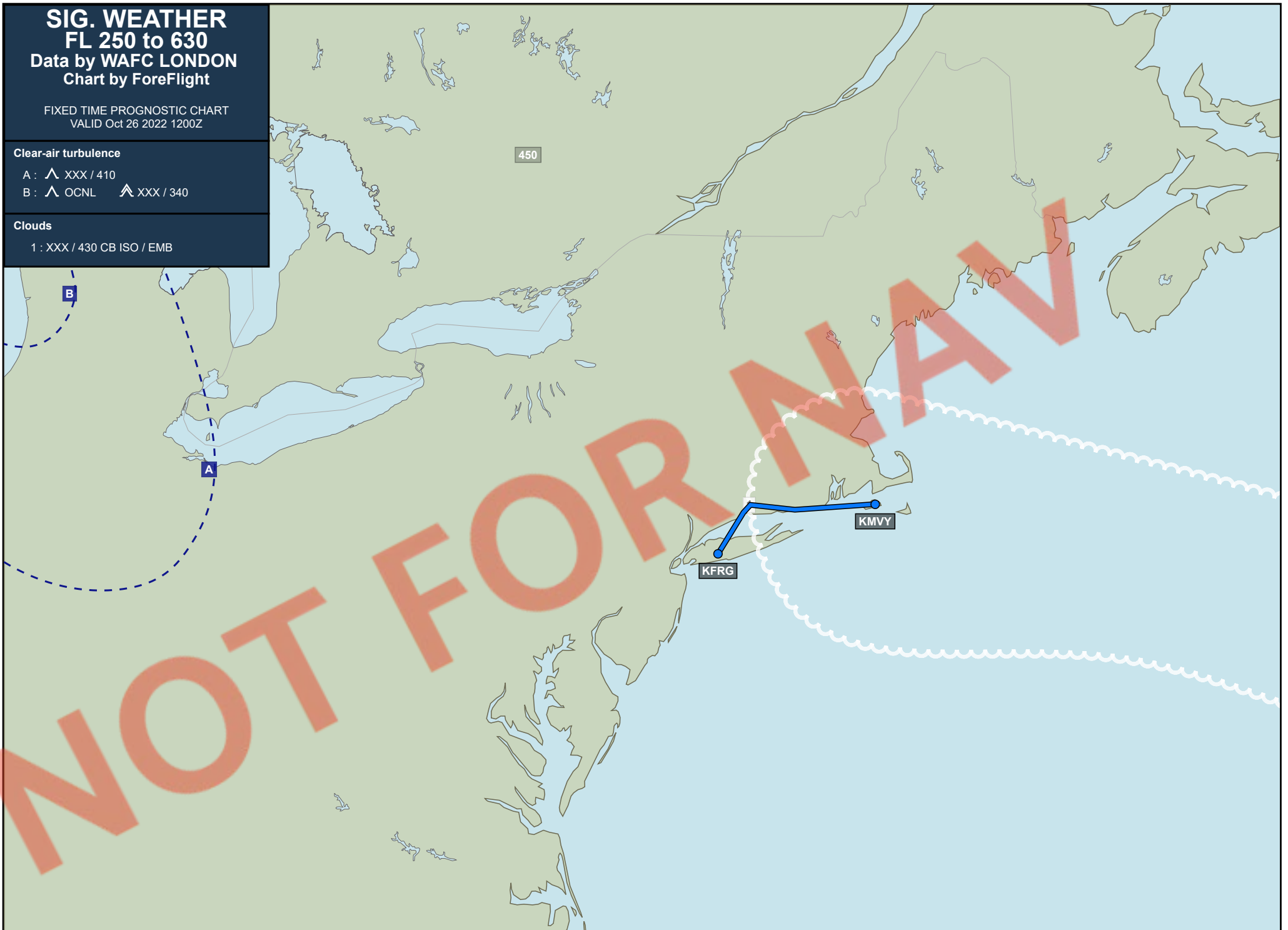
Clear-air turbulence

A :  XXX / 410

B :  OCNL  XXX / 340

Clouds

1 : XXX / 430 CB ISO / EMB



METARs / TAFs

Departure KFRG - Republic

METAR ● SPECI KFRG 261330Z 03003KT 2SM BR OVC004 19/18 A2985 RMK AO2 T01890178
TAF ● **KISP 261326Z 2613/2712 VRB04KT 3/4SM BR OVC002**
● **TEMPO 2613/2614 1/4SM FG**
● FM261500 VRB04KT 1SM BR OVC004
● FM261700 19005KT 2SM BR VCSH OVC008
● FM262200 22005KT 3SM BR VCSH BKN015 OVC030
● TEMPO 2622/2701 1SM BR
● FM270300 23004KT 6SM BR BKN025
● FM270500 VRB04KT P6SM FEW025 SCT100
● FM270900 31007KT P6SM FEW100

Destination KMYV - Martha's Vineyard

METAR ● 261334Z 36003KT 2SM -RA BR SCT003 BKN011 OVC036 18/18 A2985 RMK AO2 RAB1255E04B23 P0002 T01830178
TAF ● KFMH 261120Z 2612/2712 08006KT 1/4SM -SHRADZ FG OVC002
● **FM261400 10006KT 1/2SM -SHRA FG OVC002**
● FM261700 14004KT 1SM -SHRA BR OVC003
● FM262300 23003KT 1/2SM FG OVC002
● FM270300 23005KT 3/4SM BR OVC002
● FM271000 26005KT 5SM BR BKN020

Enroute airport KBDR - Bridgeport/Sikorsky

METAR ● METAR KBDR 261252Z 08006KT 1/2SM -RA BR BKN004 OVC020 17/17 A2986 RMK AO2 RAB33 SLP110 P0002 T01720172
TAF ● 261139Z 2612/2712 05005KT 1SM BR OVC004
● TEMPO 2612/2614 1/2SM FG
● FM261500 08005KT 3/4SM BR VCSH OVC004
● FM261700 VRB05KT 2SM BR VCSH OVC008
● FM262200 22004KT 3SM BR VCSH OVC015
● TEMPO 2622/2701 1SM BR
● FM270300 24007KT 6SM BR BKN020
● FM270500 28006KT P6SM FEW030 SCT090
● FM270900 31009KT P6SM FEW100

Enroute airport KHVN - Tweed/New Haven

METAR ● METAR KHVN 261253Z 00000KT 1/4SM R02/2600V2800FT FG VV003 19/19 A2986 RMK AO2 SLP110 T01890189
TAF ● KBDR 261139Z 2612/2712 05005KT 1SM BR OVC004
● TEMPO 2612/2614 1/2SM FG
● FM261500 08005KT 3/4SM BR VCSH OVC004
● FM261700 VRB05KT 2SM BR VCSH OVC008
● FM262200 22004KT 3SM BR VCSH OVC015
● TEMPO 2622/2701 1SM BR
● FM270300 24007KT 6SM BR BKN020
● FM270500 28006KT P6SM FEW030 SCT090
● FM270900 31009KT P6SM FEW100

Enroute airport KMMK - Meriden Markham Municipal

METAR ● METAR KMMK 261253Z AUTO 00000KT 10SM OVC004 18/17 A2987 RMK AO2 SLP112 T01830172
TAF ● KBDR 261139Z 2612/2712 05005KT 1SM BR OVC004
● TEMPO 2612/2614 1/2SM FG
● FM261500 08005KT 3/4SM BR VCSH OVC004
● FM261700 VRB05KT 2SM BR VCSH OVC008
● FM262200 22004KT 3SM BR VCSH OVC015
● TEMPO 2622/2701 1SM BR
● FM270300 24007KT 6SM BR BKN020
● FM270500 28006KT P6SM FEW030 SCT090
● FM270900 31009KT P6SM FEW100

Enroute airport KSNC - Chester

METAR ● METAR KSNC 261315Z AUTO 09003KT M1/4SM FG OVC001 19/19 A2987 RMK AO2
 TAF ● KGON 261140Z 2612/2712 VRB04KT 3/4SM BR VCSH OVC003
 ● TEMPO 2612/2613 1/4SM FG VV002
 ● FM261300 05005KT 3/4SM BR OVC004
 ● TEMPO 2613/2615 2SM -SHRA BR
 ● FM261600 08005KT 1SM BR OVC008
 ● FM261800 VRB05KT 2SM BR VCSH OVC008
 ● FM270300 21006KT 5SM BR BKN006
 ● FM270500 24006KT P6SM BKN020
 ● FM270900 31009KT P6SM SCT020 SCT100

Enroute airport KGON - Groton-New London

METAR ● METAR KGON 261256Z 06004KT 3/4SM R05/4000V5000FT -RA BR OVC003 20/18 A2986 RMK AO2 RAB08E17B44
 SLP109 P0001 T02000183
 TAF ● 261140Z 2612/2712 VRB04KT 3/4SM BR VCSH OVC003
 ● TEMPO 2612/2613 1/4SM FG VV002
 ● FM261300 05005KT 3/4SM BR OVC004
 ● TEMPO 2613/2615 2SM -SHRA BR
 ● FM261600 08005KT 1SM BR OVC008
 ● FM261800 VRB05KT 2SM BR VCSH OVC008
 ● FM270300 21006KT 5SM BR BKN006
 ● FM270500 24006KT P6SM BKN020
 ● FM270900 31009KT P6SM SCT020 SCT100

Enroute airport KWST - Westerly State

METAR ● SPECI KWST 261331Z AUTO 00000KT 2 1/2SM -RA BR OVC004 19/19 A2986 RMK AO2 P0001 T01890189
 TAF ● KGON 261140Z 2612/2712 VRB04KT 3/4SM BR VCSH OVC003
 ● TEMPO 2612/2613 1/4SM FG VV002
 ● FM261300 05005KT 3/4SM BR OVC004
 ● TEMPO 2613/2615 2SM -SHRA BR
 ● FM261600 08005KT 1SM BR OVC008
 ● FM261800 VRB05KT 2SM BR VCSH OVC008
 ● FM270300 21006KT 5SM BR BKN006
 ● FM270500 24006KT P6SM BKN020
 ● FM270900 31009KT P6SM SCT020 SCT100

Enroute airport KUUU - Newport State

METAR ● SPECI KUUU 261329Z AUTO 06003KT 4SM -RA BR BKN005 BKN016 OVC025 18/18 A2986 RMK AO2 P0001
 T01830183
 TAF ● KPVD 261120Z 2612/2712 03003KT 1/4SM -DZ FG VCSH OVC002
 ● FM261500 05003KT 1/2SM FG VCSH OVC002
 ● FM261600 07003KT 3/4SM BR VCSH OVC003
 ● FM261900 00000KT 1 1/2SM BR OVC004
 ● FM270200 23004KT 4SM BR OVC004
 ● FM271000 28005KT P6SM BKN080

SIGMETs

East U.S.**CONVECTIVE SIGMET**

WSUS31 KRCI 261255
 SIGE
 ?MKCE WST 261255
 CONVECTIVE SIGMET 13E
 VALID UNTIL 1455Z
 FL CSTL WTRS
 FROM 90WSW CTY-70WNW PIE-90W PIE-150SSW TLH-90WSW CTY
 AREA EMBD TS MOV FROM 27035KT. TOPS TO FL420.

OUTLOOK VALID 261455-261855
AREA 1...FROM MPV-140SE BGR-190SE ACK-190S ACK-HTO-MPV
WST ISSUANCES POSS. REFER TO MOST RECENT ACUS01 KWNS FROM STORM
PREDICTION CENTER FOR SYNOPSIS AND METEOROLOGICAL DETAILS.
AREA 2...FROM AMG-60SSE SAV-SRQ-190WSW PIE-CEW-AMG
WST ISSUANCES POSS. REFER TO MOST RECENT ACUS01 KWNS FROM STORM
PREDICTION CENTER FOR SYNOPSIS AND METEOROLOGICAL DETAILS.

No SIGMET found for KZNY, KZBW

NOT FOR NAV

NOTAMs

NOTAMs have been filtered using the following criteria:

Filtered NOTAMs not active during this flight

Filtered all non-oceanic ARTCC NOTAMs

Recent NOTAMs (added or edited within 12 hours) KFRG - Republic

No NOTAMs have been submitted for KFRG within the last 12 hours

Departure KFRG - Republic

RUNWAY

FRG 10/058 FRG RWY 19 FICON 5/5/5 100 PCT WET OBS AT 2210252341. 2210252341-2210262341

FRG 10/057 FRG RWY 14 FICON 5/5/5 100 PCT WET OBS AT 2210252340. 2210252340-2210262340

FRG 10/021 FRG RWY 19 PAPI BEYOND 4DEG LEFT OF RCL UNUSABLE 2110111840-PERM

TAXIWAY

FRG 10/059 FRG TWY ALL FICON WET OBS AT 2210252341. 2210252341-2210262341

AERODROME

FRG 01/075 FRG AD AP RDO ALTIMETER UNREL. AUTOLAND, HUD TO TOUCHDOWN, ENHANCED FLT VISION SYSTEMS TO TOUCHDOWN, HEL OPS REQUIRING RDO ALTIMETER DATA TO INCLUDE HOVER AUTOPILOT MODES AND CAT A/B/PERFORMANCE CLASS TKOF AND LDG NOT AUTHORIZED EXC FOR ACFT USING APPROVED ALTERNATIVE METHODS OF COMPLIANCE DUE TO 5G C-BAND INTERFERENCE PLUS SEE AIRWORTHINESS DIRECTIVES 2021-23-12, 2021-23-13 2201190501-2401190501

OBSTRUCTION

FRG 10/055 FRG OBST TOWER LGT (ASR 1065572) 404303.00N0732004.00W (3.6NM E FRG) 288.1FT (265.1FT AGL) **u/s** 2210241149-2211081049

APRON

FRG 10/060 FRG APRON ALL FICON WET OBS AT 2210252342. 2210252342-2210262342

STANDARD INSTRUMENT PROCEDURE

FDC 2/9553 FRG SID REPUBLIC, FARMINGDALE, NY. REPUBLIC ONE DEPARTURE... COATE DEPARTURES: NA EXCEPT FOR AIRCRAFT EQUIPPED WITH SUITABLE RNAV SYSTEM WITH GPS, SAX VORTAC OUT OF SERVICE. 2209191420-2305011420EST

STANDARD TERMINAL ARRIVAL ROUTE

FDC 2/8716 FRG STAR REPUBLIC AIRPORT, FARMINGDALE, NY LENDY SEVEN ARRIVAL... DISREGARD EXPECT HARTY AT FL210. SHOULD READ EXPECT JENNO AT FL230 2203241300-2212312359

FDC 2/1225 FRG STAR REPUBLIC AIRPORT, FARMINGDALE, NY LENDY ARRIVAL... UNUSABLE BLW 4000FT 2201060000-2301052359

INSTRUMENT APPROACH PROCEDURE

FDC 2/7038 FRG IAP REPUBLIC, FARMINGDALE, NY. RNAV (GPS) Y RWY 14, AMDT 2E... LNAV/VNAV DA 443/HAT 366 ALL CATS. EXCEPT WHEN ADVISED BY ATCT THAT THIS CRANE IS DOWN. TEMPORARY CRANE 232FT MSL 4338FT W OF RWY 14 (2020-AEA-12862-OE). 2210031247-2212091247EST

FDC 2/7039 FRG IAP REPUBLIC, FARMINGDALE, NY. RNAV (RNP) Z RWY 14, ORIG-B... RNP 0.30 DA 557/HAT 480 ALL CATS. VISIBILITY ALL CATS 1 1/8. EXCEPT WHEN ADVISED BY ATCT THAT THIS CRANE IS DOWN. TEMPORARY CRANE 232FT MSL 4338FT W OF RWY 14 (2020-AEA-12862-OE). 2210031247-2212091247EST

Recent NOTAMs (added or edited within 12 hours) KMVY - Martha's Vineyard

RUNWAY

MVY 10/072 MVY RWY 06/24 **CLSD** 2210261200-2210262000EST

COMMUNICATION

MVY 10/075 MVY COM REMOTE TRANS/REC 133.75 **u/s** 2210261052-2211072000EST

Destination KMVY - Martha's Vineyard

RUNWAY

MVY 10/074 MVY RWY 33 FICON 5/5/5 100 PCT WET OBS AT 2210252235. 2210252235-2210262235

MVY 10/073 MVY RWY 06 FICON 5/5/5 100 PCT WET OBS AT 2210252231. 2210252231-2210262231

MVY 10/047 MVY RWY 24 PAPI **u/s** 2210200515-2210272359

MVY 10/034 MVY RWY 33 RWY END ID LGT **u/s** 2210101404-2210312000EST

MVY 08/071 MVY RWY 06 PAPI **u/s** 2208301138-2210282000EST

MVY 08/015 MVY RWY 06/24 CL MARKINGS OBSC 2208031158-2211301200EST

TAXIWAY

MVY 05/080 MVY TWY D HLDG PSN MARKINGS FADED 2205181122-2305172200

MVY 05/076 MVY TWY A RUNUP PAD FOR RWY 06 HLDG PSN MARKINGS FADED 2205172143-2305172200

MVY 05/077 MVY TWY A RUNUP PAD FOR RWY 24 HLDG PSN MARKINGS FADED 2205172143-2305172200

MVY 05/075 MVY TWY A1 HLDG PSN MARKINGS FADED 2205172140-2305172200

MVY 05/073 MVY TWY B HLDG PSN MARKINGS OBSC 2205172137-2305172135

MVY 05/072 MVY TWY C HLDG PSN MARKINGS OBSC 2205172133-2305172133

AERODROME

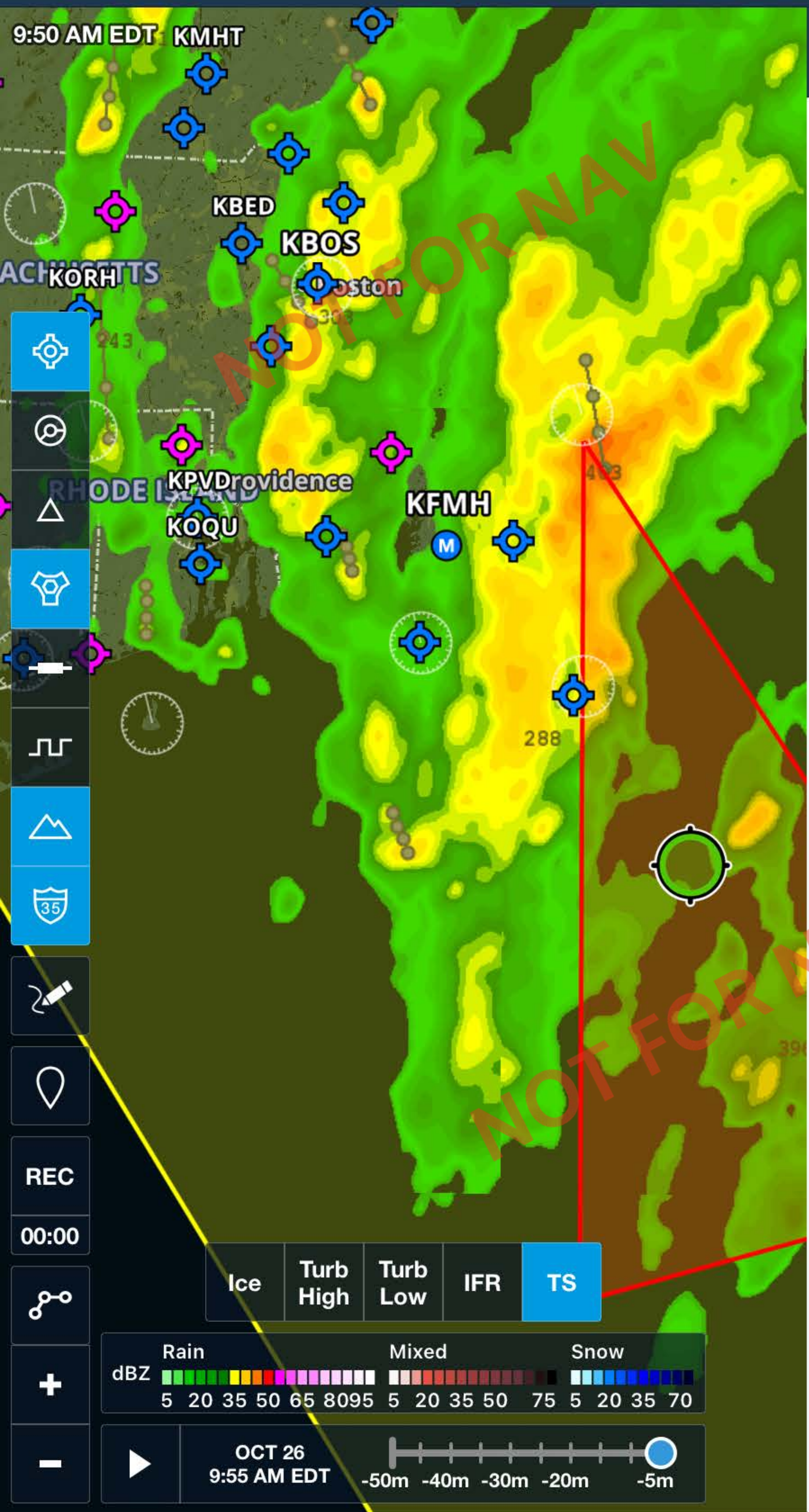
MVY 01/038 MVY AD AP RDO ALTIMETER UNREL. AUTOLAND, HUD TO TOUCHDOWN, ENHANCED FLT VISION SYSTEMS TO TOUCHDOWN, HEL OPS REQUIRING RDO ALTIMETER DATA TO INCLUDE HOVER AUTOPILOT MODES AND CAT A/B/PERFORMANCE CLASS TKOF AND LDG NOT AUTHORIZED EXC FOR ACFT USING APPROVED ALTERNATIVE METHODS OF COMPLIANCE DUE TO 5G C-BAND INTERFERENCE PLUS SEE AIRWORTHINESS DIRECTIVES 2021-23-12, 2021-23-13 2201190501-2401190501

Enroute navigation NOTAMs

NAVIGATION

BUF 10/177 GGT NAV TACAN **U/S** 2210260504-2210282000EST
PVD 10/239 PVD NAV VOR/DME **U/S** 2210261300-2210261500
PVD 10/244 PVD NAV ILS RWY 34 LOC/DME **U/S** 2210261300-2210261900
HFD 10/010 HFD NAV LOC TYPE DIRECTIONAL AID RWY 02 LOC **U/S** 2210260415-2210282000EST
ACK 10/043 ACK NAV ILS RWY 06 **U/S** 2210251013-2210282000EST
JFK 10/197 JFK NAV VOR/DME **U/S** 2210241100-2211071100
JFK 10/261 JFK NAV ILS RWY 04L GP **U/S** 2210231105-2210262359
ACK 10/039 ACK NAV ILS RWY 24 DME **U/S** 2210211702-2211072000EST
ACK 10/038 ACK NAV ILS RWY 06 DME **U/S** 2210211701-2211072000EST
ISP 10/086 CMK NAV VOR **U/S** 2210071300-2310022000EST
EWB 09/015 EWB NAV ILS RWY 05 BC **U/S** 2209221049-2309182000EST
HYA 08/050 HYA NAV ILS RWY 15 GP **U/S** 2208291432-2210312000EST
ACK 08/031 ACK NAV ILS RWY 24 LOC **U/S** 2208261300-2210312000EST
HPN 03/050 HPN NAV ILS RWY 16 NOT MNT DLY 0300-1000 2203140300-2211051000
HPN 03/051 HPN NAV ILS RWY 34 NOT MNT DLY 0300-1000 2203140300-2211051000
HPN 03/052 HPN NAV ILS RWY 16 SPECIAL AUTH CAT II NA DLY 0300-1000 2203140300-2211051000

NOT FOR NAV



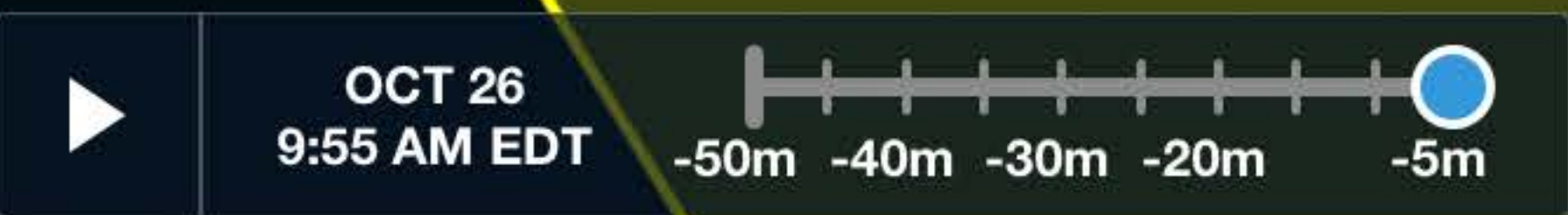
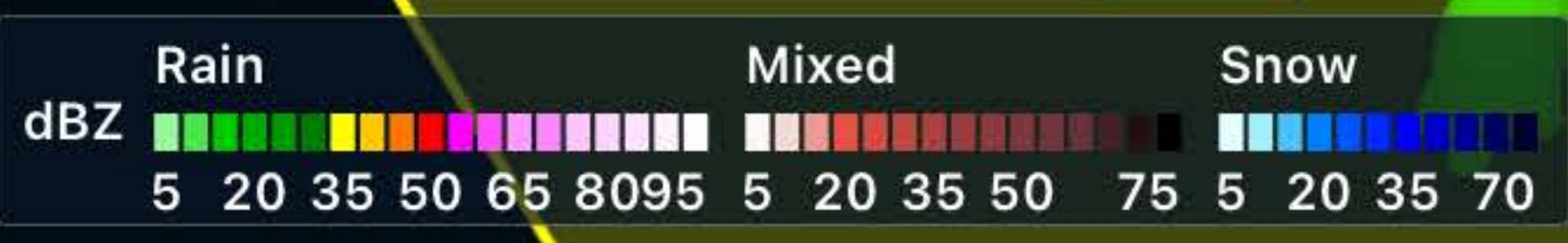
Close Map Info

- Convective**
Oct 26, 9:55 AM - 11:55 AM EDT
Active, Surface - 40,000' MSL
- Convective**
Oct 26, 11:55 AM - 3:55 PM EDT
Outlook

REC

00:00

TS



Distance to Next
35 nm

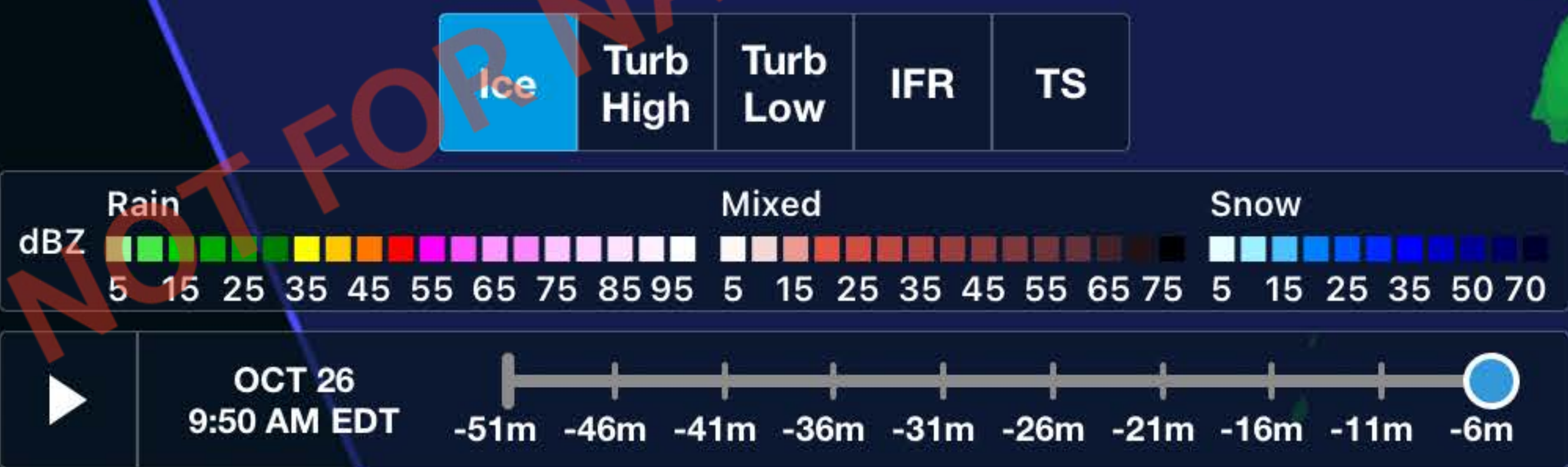
ETE Dest

Pressure Altitude

Accuracy
30 m

Track
80°M

Accuracy
30 m



Distance to Next: **58 nm**

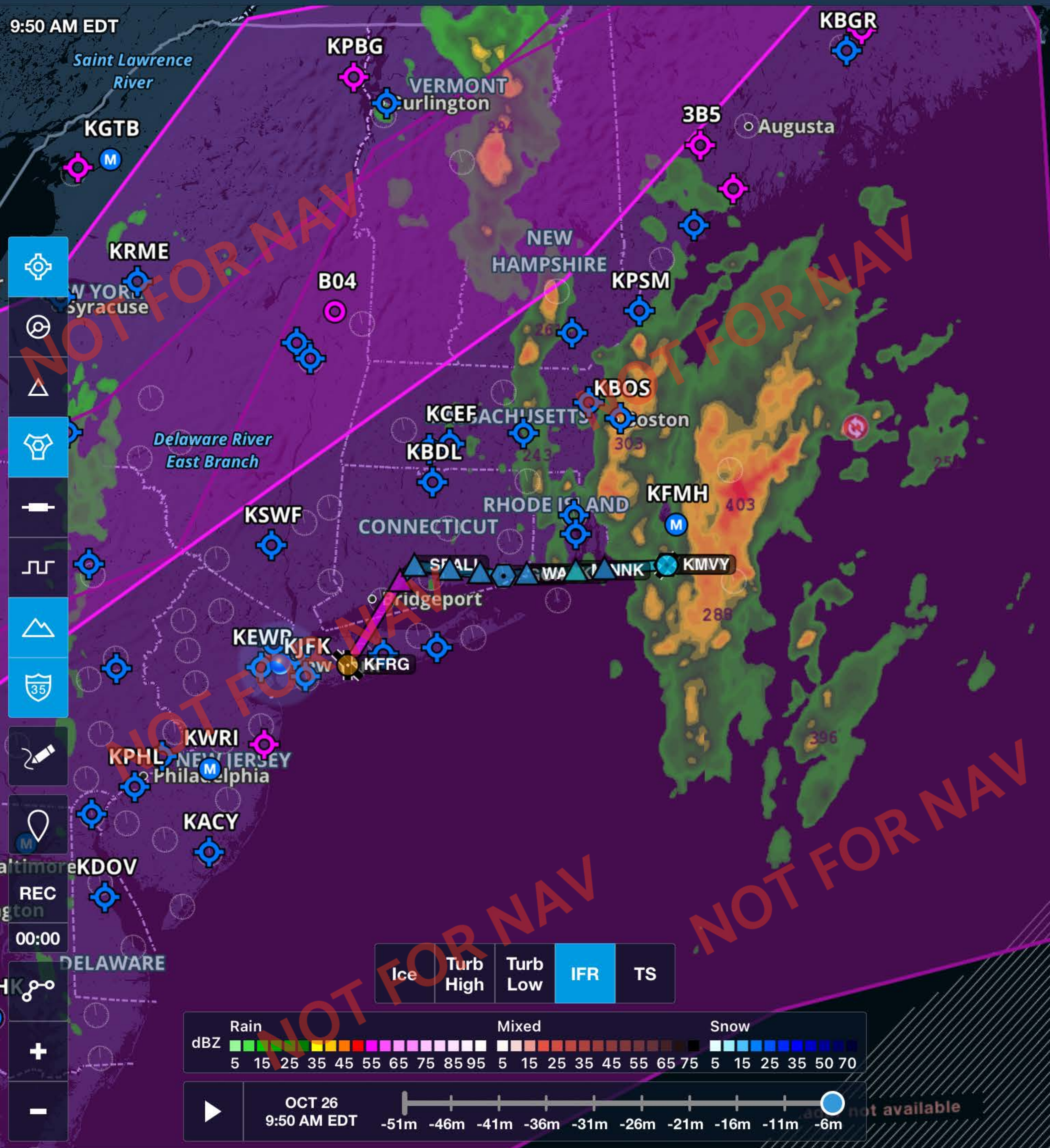
ETE Dest: -----

Pressure Altitude: -----

Accuracy: **10 m**

Track: -----

Accuracy: **10 m**



Legend for weather conditions:

- Ice
- Turb High
- Turb Low
- IFR** (selected)
- TS

dBZ Scale:

Rain	Mixed	Snow
5 15 25 35 45 55 65 75 85 95	5 15 25 35 45 55 65 75	5 15 25 35 50 70

Timeline for OCT 26, 9:50 AM EDT:

-51m -46m -41m -36m -31m -26m -21m -16m -11m -6m

Distance to Next: **58 nm**

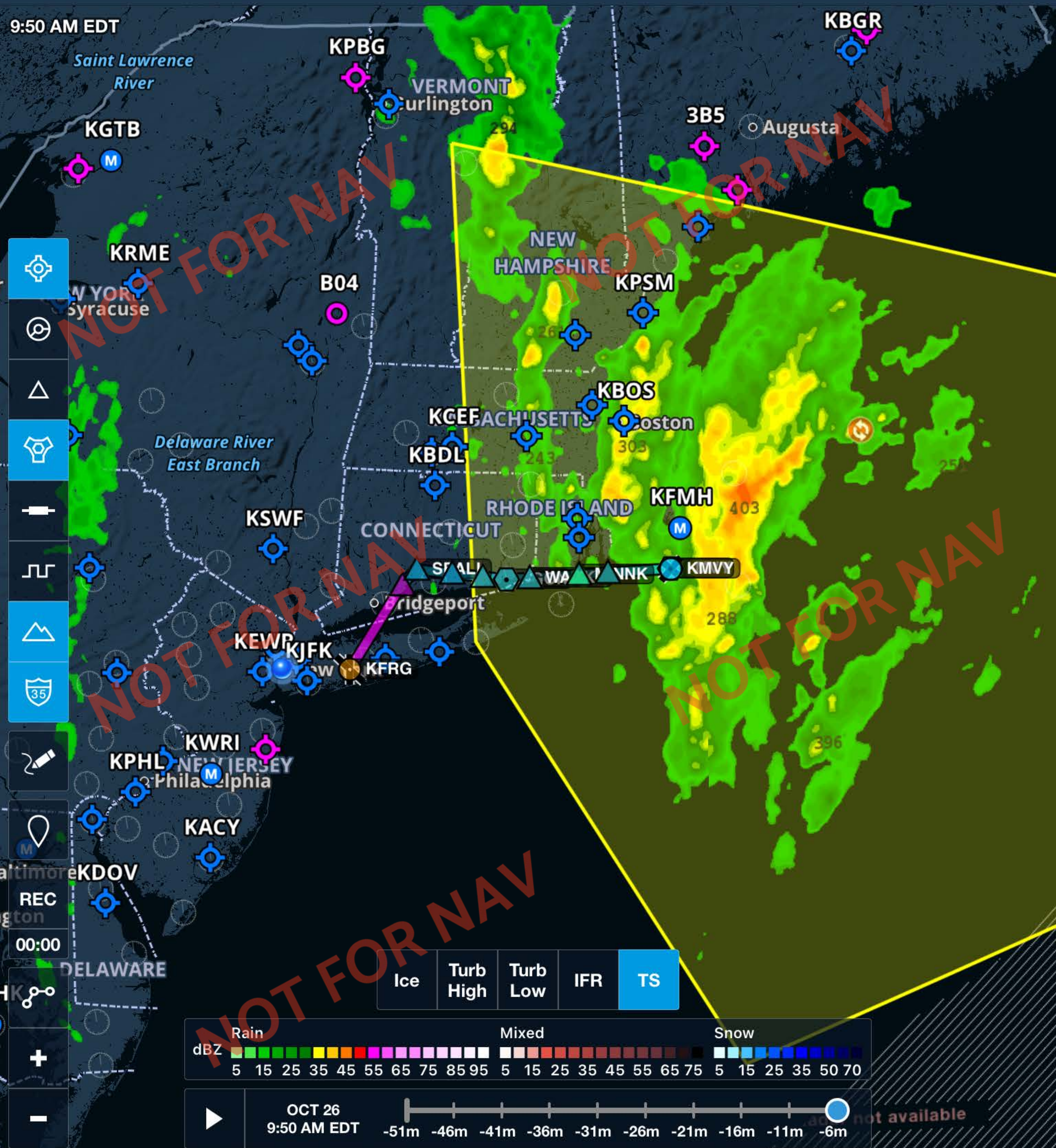
ETE Dest: -----

Pressure Altitude: -----

Accuracy: **10 m**

Track: **308°M**

Accuracy: **10 m**



Distance to Next: **58 nm**

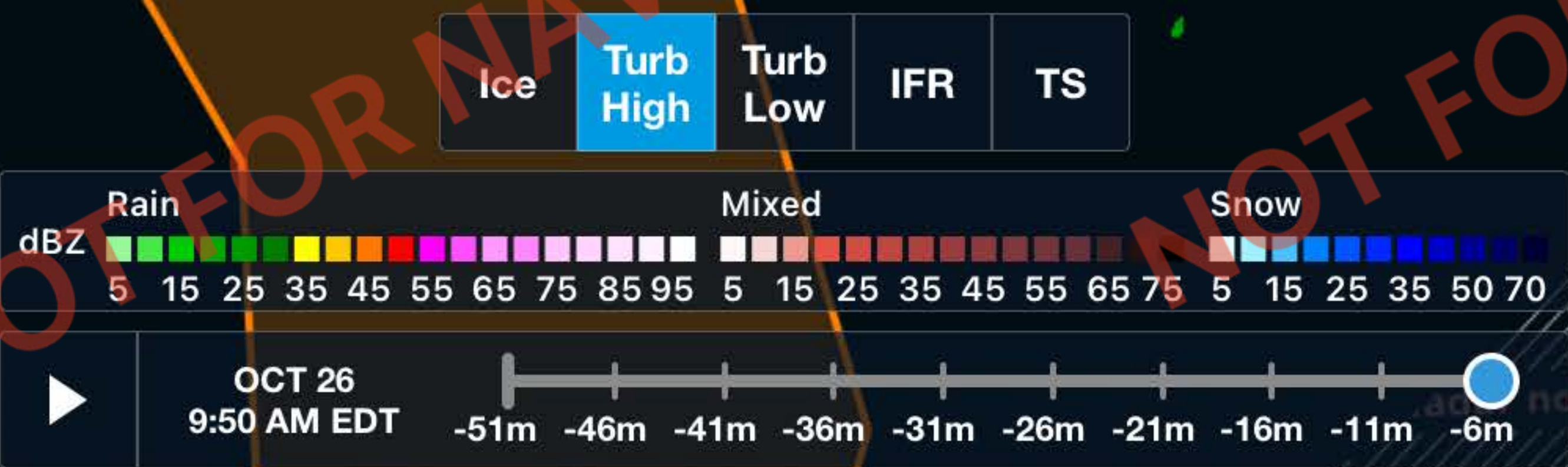
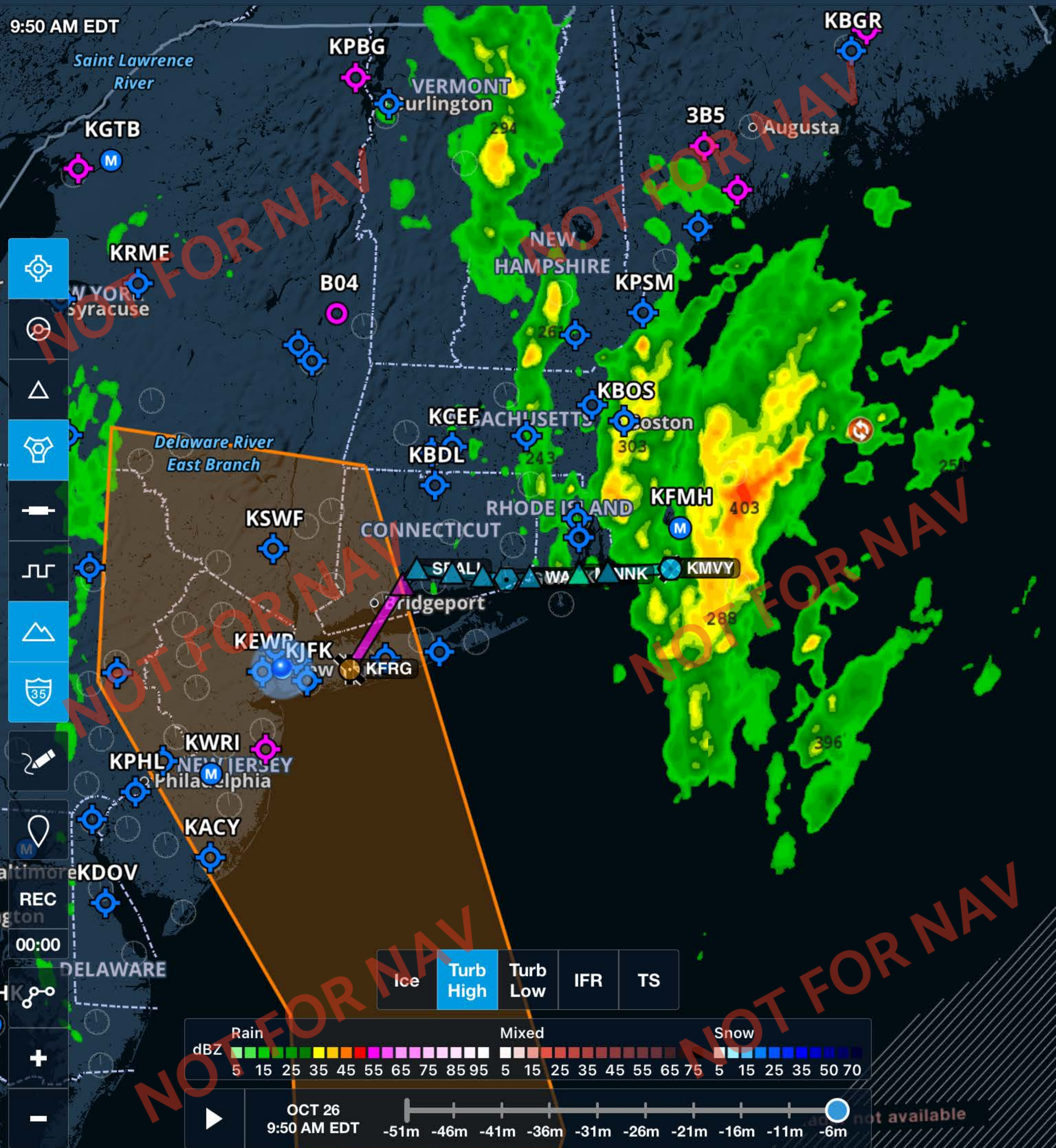
ETE Dest: -----

Pressure Altitude: -----

Accuracy: **10 m**

Track: **279°M**

Accuracy: **10 m**



Distance to Next: 58 nm
 ETE Dest: -----
 Pressure Altitude: -----
 Accuracy: 10 m
 Track: 350°M
 Accuracy: 10 m