

DIST
216 nm

ETE
1h49m

ETA
1539Z

FLIGHT FUEL
15 g

WIND
22 kts tail

Calculated a few seconds ago [Refresh](#)

Navlog

Briefing

0 Files

0 New Msg

OVERVIEW

ETD [ETA](#)
10/26/2022 **1350Z**

Time (Zulu) **1350Z**

Departure **KMMU** [Takeoff](#) [Info](#)

Destination **KACK** [Landing](#) [Info](#)

Alternate **Optional**

Aircraft **N106ST (C172)**

Performance Profile **Max RPM Lean Mixture ...**

ROUTE

Route **BREZY V39 CMK BAYYS SEALL V188 GON DEEPO** [Routes >](#)

Altitude **11,000** [Advisor >](#)

Flight Rules **IFR**

PAYLOAD

PAYLOAD (LBS)	COUNT	AVG. WT.	TOTAL
Persons	2	200	400
Cargo			0
Total Payload			400

FUEL

Fuel Policy **Minimum Fuel**

FUEL ALLOCATION

	LBS	GAL
Start	127	22
15 gal available	/222	/37
Flight Fuel	92	15
Taxi Fuel	7	1
Fuel to Destination	85	14
Fuel at Landing	35	6
Alternate Fuel	0	0
Reserve Fuel	35	6
Extra Fuel	0	0

WEIGHTS

WEIGHTS	LBS
Zero Fuel Weight	1,660
540 lb available	/ 2,200
Total Fuel at Start	127
Ramp Weight	1,787
420 lbs available	/ 2,207
Taxi/Takeoff Fuel	7
Takeoff Weight	1,780
420 lbs available	/ 2,200
Fuel to Destination	85
Landing Weight	1,695
505 lb available	/ 2,200

DESTINATION SERVICES

FBO **Optional** [Select FBO >](#)

FLIGHT LOG

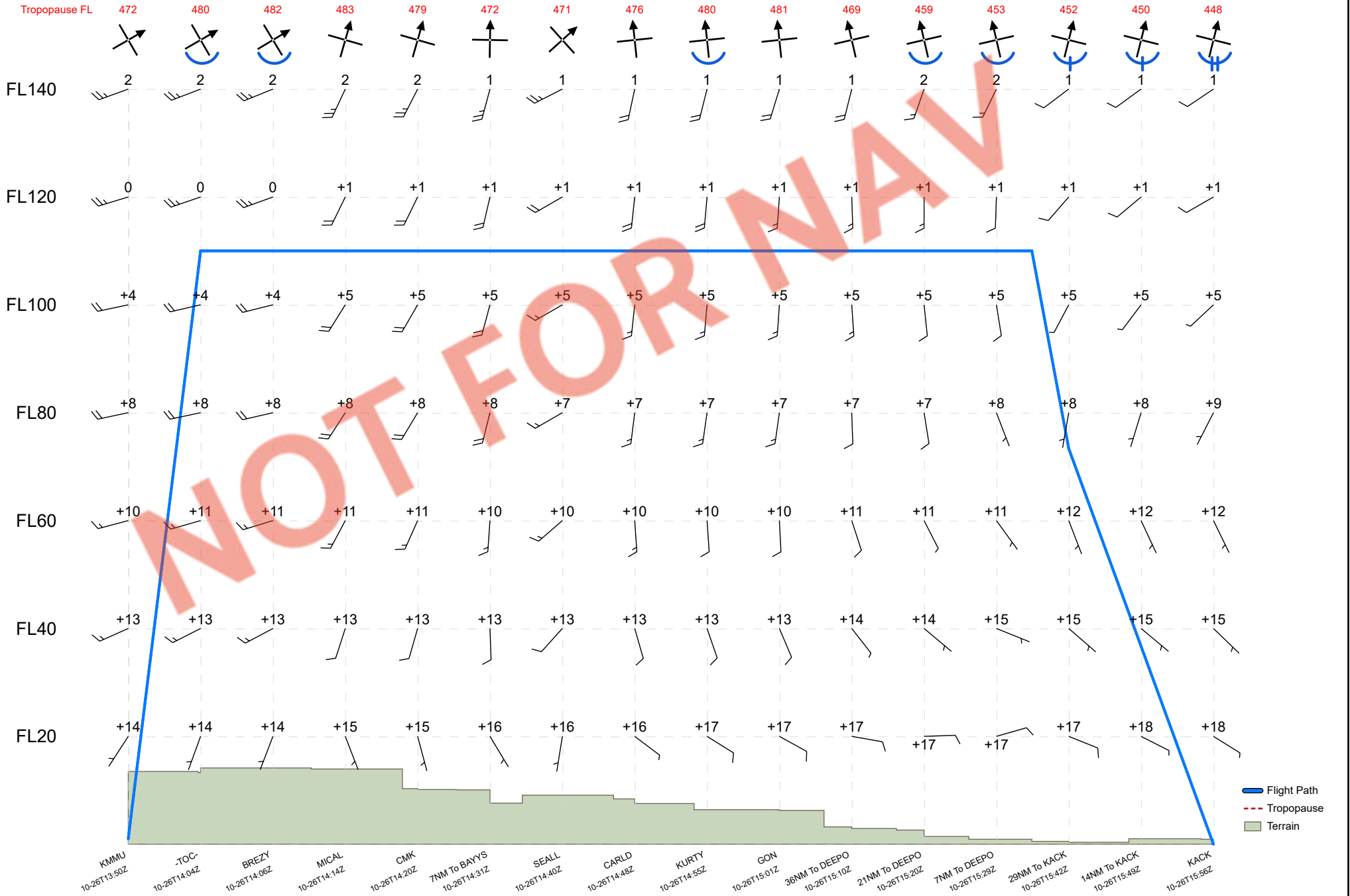
Fuel at Shutdown (g) **0** Times **Optional** [Edit >](#)

Vertical Cross Section Chart

Data by NCEP

Chart by ForeFlight

Data source: Oct 26 2022 0600Z Time: Oct 26 2022 1338Z



Turbulence EDR: 0.0 < [color scale] < 1.0

Icing Severity: [symbols]

Temperatures are written as degree celsius and are negative if not prefixed with +

WIND/TEMP/TURB

FL 110

Data by NCEP

Chart by ForeFlight

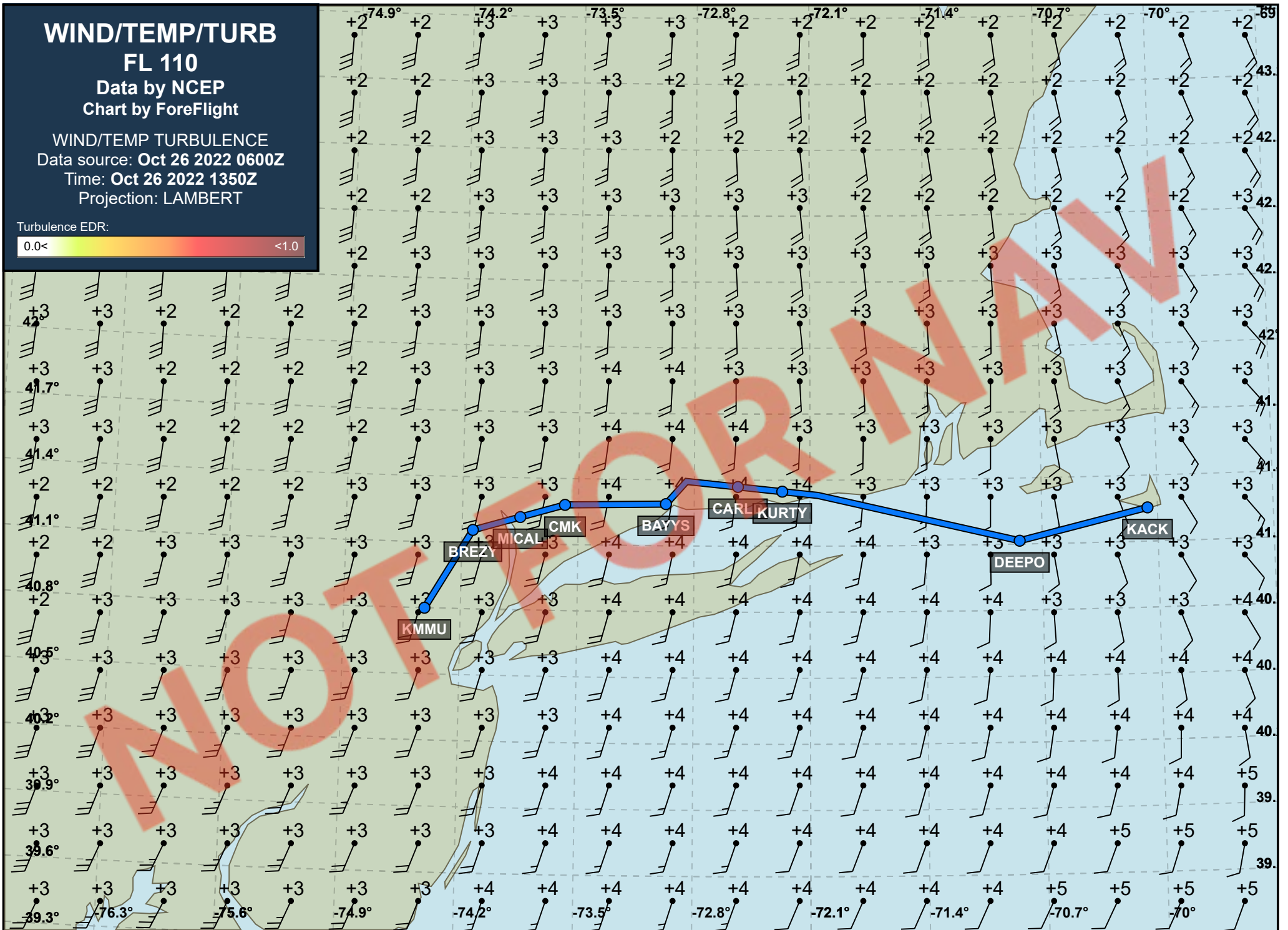
WIND/TEMP TURBULENCE

Data source: Oct 26 2022 0600Z

Time: Oct 26 2022 1350Z

Projection: LAMBERT


Turbulence EDR:



SIG. WEATHER
FL 250 to 630
Data by WAFC LONDON
Chart by ForeFlight

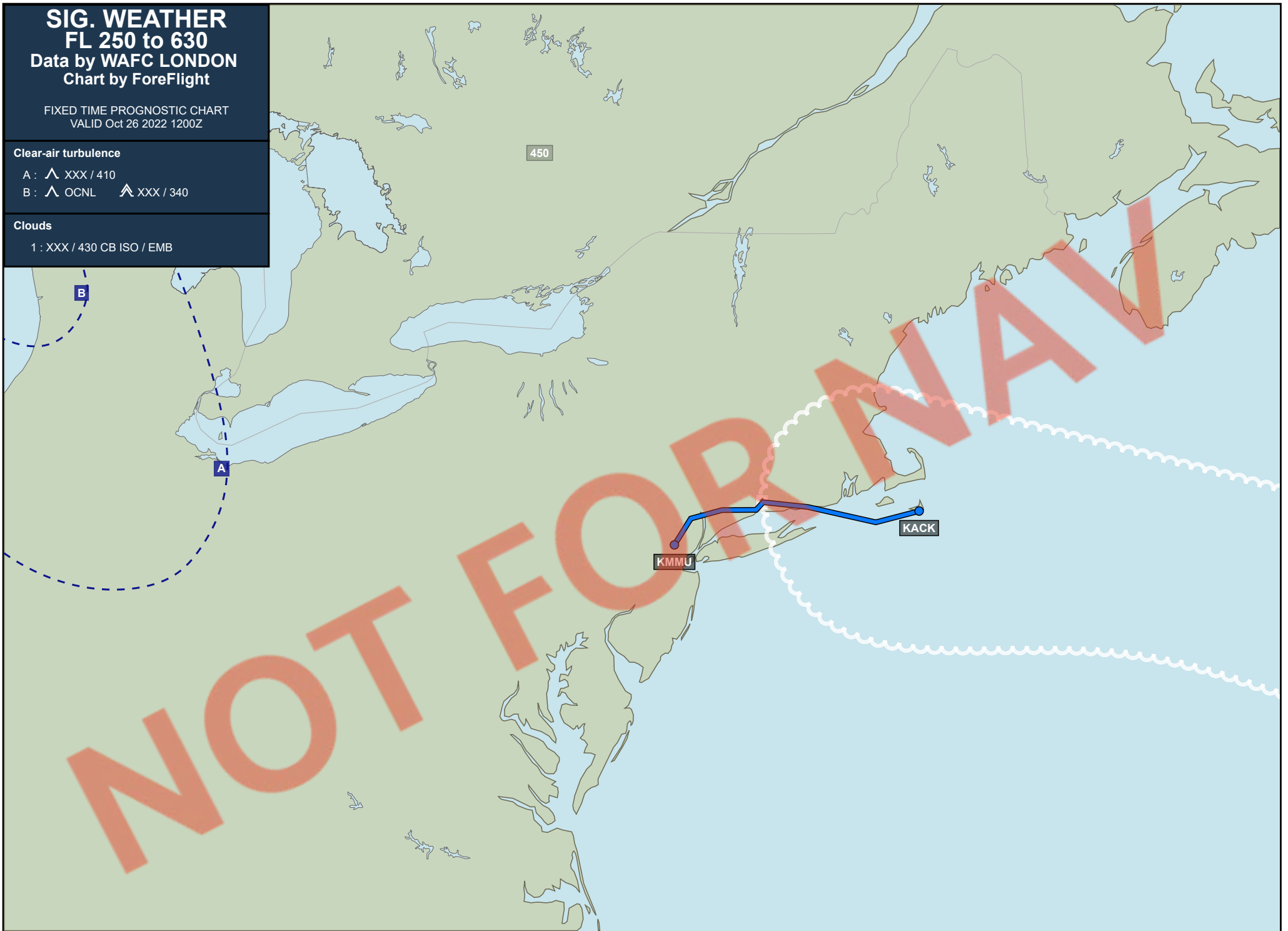
FIXED TIME PROGNOSTIC CHART
VALID Oct 26 2022 1200Z

Clear-air turbulence

- A :  XXX / 410
- B :  OCNL  XXX / 340

Clouds

- 1 : XXX / 430 CB ISO / EMB



METARs / TAFs

Departure KMMU - Morristown Municipal

METAR ● METAR KMMU 261245Z 0000KT 1 1/2SM BR OVC004 20/20 A2987

TAF ● **KEWR 261307Z 2613/2718 VRB03KT 1SM BR OVC004**

- **TEMPO 2613/2614 3/4SM BR**
- FM261400 VRB03KT 5SM BR OVC004
- FM261600 20005KT P6SM OVC007
- FM262000 22006KT P6SM BKN015 OVC030
- TEMPO 2620/2622 5SM -SHRA BR BKN010
- FM262200 23007KT P6SM VCSH SCT010 BKN025
- FM262300 24006KT P6SM VCSH SCT020 BKN035
- FM270100 28005KT P6SM SCT070
- FM271000 32010KT P6SM FEW070
- FM271500 32012G17KT P6SM FEW250

Destination KACK - Nantucket Memorial

METAR ● SPECI KACK 261325Z 06008KT 1 3/4SM +RA BR FEW018 BKN034 21/20 A2986 RMK AO2 P0031 T02060200

TAF ● 261120Z 2612/2712 08008KT 1/2SM -SHRADZ FG OVC002

- **FM261400 08008KT 1/4SM -SHRA FG OVC002**
- FM261700 08006KT 3/4SM -SHRA BR OVC002
- FM262100 27004KT 1/2SM FG OVC002
- FM270500 24009KT 1SM BR BKN002
- FM271100 27008KT P6SM BKN017

Enroute airport KCDW - Essex County

METAR ● SPECI KCDW 261326Z 11003KT 6SM BR OVC005 18/17 A2986 RMK AO2 T01780167

TAF ● KTEB 261315Z 2613/2718 VRB03KT 2SM BR OVC003

- TEMPO 2613/2614 3/4SM BR
- FM261500 19004KT 6SM BR VCSH BKN009 OVC012
- FM262000 20005KT 5SM BR VCSH BKN015 OVC030
- TEMPO 2620/2622 5SM -SHRA BR BKN010
- FM262200 21005KT P6SM VCSH SCT010 BKN025
- FM262300 23006KT P6SM VCSH SCT020 BKN035
- FM270100 25005KT P6SM SCT070
- FM271000 32010KT P6SM FEW070
- FM271500 32012G17KT P6SM FEW250

Enroute airport KHPN - Westchester County

METAR ● METAR KHPN 261256Z 10004KT 1/4SM R16/2000V2600FT FG VV001 18/18 A2986 RMK AO2 SLP110 T01780178 \$

TAF ● 261132Z 2612/2712 VRB02KT 1/4SM FG VV001

- FM261300 VRB04KT 1/2SM FG OVC002
- TEMPO 2613/2615 1/4SM FG OVC001
- FM261500 VRB03KT 3SM BR OVC007
- FM261900 20004KT 6SM BR BKN009 OVC015
- TEMPO 2619/2623 5SM -SHRA BR
- FM262300 VRB03KT P6SM VCSH BKN015 BKN025
- FM270000 25005KT P6SM SCT025 BKN035
- FM270400 29006KT P6SM SCT080
- FM270900 31010KT P6SM FEW080 NOT SKED

Enroute airport KDXR - Danbury Municipal

METAR ● SPECI KDXR 261326Z 0000KT 1 1/4SM BR OVC003 19/18 A2987 RMK AO2 RAB04E15 P0000 T01890178

TAF ● KBDR 261139Z 2612/2712 05005KT 1SM BR OVC004

- TEMPO 2612/2614 1/2SM FG
- FM261500 08005KT 3/4SM BR VCSH OVC004
- FM261700 VRB05KT 2SM BR VCSH OVC008
- FM262200 22004KT 3SM BR VCSH OVC015
- TEMPO 2622/2701 1SM BR
- FM270300 24007KT 6SM BR BKN020
- FM270500 28006KT P6SM FEW030 SCT090

● FM270900 31009KT P6SM FEW100

Enroute airport **KBDR - Bridgeport/Sikorsky**

METAR ● METAR KBDR 261252Z 08006KT 1/2SM -RA BR BKN004 OVC020 17/17 A2986 RMK AO2 RAB33 SLP110 P0002 T01720172
TAF ● 261139Z 2612/2712 05005KT 1SM BR OVC004
● TEMPO 2612/2614 1/2SM FG
● FM261500 08005KT 3/4SM BR VCSH OVC004
● FM261700 VRB05KT 2SM BR VCSH OVC008
● FM262200 22004KT 3SM BR VCSH OVC015
● TEMPO 2622/2701 1SM BR
● FM270300 24007KT 6SM BR BKN020
● FM270500 28006KT P6SM FEW030 SCT090
● FM270900 31009KT P6SM FEW100

Enroute airport **KHVN - Tweed/New Haven**

METAR ● METAR KHVN 261253Z 00000KT 1/4SM R02/2600V2800FT FG VV003 19/19 A2986 RMK AO2 SLP110 T01890189
TAF ● KBDR 261139Z 2612/2712 05005KT 1SM BR OVC004
● TEMPO 2612/2614 1/2SM FG
● FM261500 08005KT 3/4SM BR VCSH OVC004
● FM261700 VRB05KT 2SM BR VCSH OVC008
● FM262200 22004KT 3SM BR VCSH OVC015
● TEMPO 2622/2701 1SM BR
● FM270300 24007KT 6SM BR BKN020
● FM270500 28006KT P6SM FEW030 SCT090
● FM270900 31009KT P6SM FEW100

Enroute airport **KMMK - Meriden Markham Municipal**

METAR ● METAR KMMK 261253Z AUTO 00000KT 10SM OVC004 18/17 A2987 RMK AO2 SLP112 T01830172
TAF ● KBDR 261139Z 2612/2712 05005KT 1SM BR OVC004
● TEMPO 2612/2614 1/2SM FG
● FM261500 08005KT 3/4SM BR VCSH OVC004
● FM261700 VRB05KT 2SM BR VCSH OVC008
● FM262200 22004KT 3SM BR VCSH OVC015
● TEMPO 2622/2701 1SM BR
● FM270300 24007KT 6SM BR BKN020
● FM270500 28006KT P6SM FEW030 SCT090
● FM270900 31009KT P6SM FEW100

Enroute airport **KSNC - Chester**

METAR ● METAR KSNC 261315Z AUTO 09003KT M1/4SM FG OVC001 19/19 A2987 RMK AO2
TAF ● KGON 261140Z 2612/2712 VRB04KT 3/4SM BR VCSH OVC003
● TEMPO 2612/2613 1/4SM FG VV002
● FM261300 05005KT 3/4SM BR OVC004
● TEMPO 2613/2615 2SM -SHRA BR
● FM261600 08005KT 1SM BR OVC008
● FM261800 VRB05KT 2SM BR VCSH OVC008
● FM270300 21006KT 5SM BR BKN006
● FM270500 24006KT P6SM BKN020
● FM270900 31009KT P6SM SCT020 SCT100

Enroute airport **KGON - Groton-New London**

METAR ● METAR KGON 261256Z 06004KT 3/4SM R05/4000V5000FT -RA BR OVC003 20/18 A2986 RMK AO2 RAB08E17B44 SLP109 P0001 T02000183
TAF ● 261140Z 2612/2712 VRB04KT 3/4SM BR VCSH OVC003
● TEMPO 2612/2613 1/4SM FG VV002
● FM261300 05005KT 3/4SM BR OVC004
● TEMPO 2613/2615 2SM -SHRA BR
● FM261600 08005KT 1SM BR OVC008
● FM261800 VRB05KT 2SM BR VCSH OVC008
● FM270300 21006KT 5SM BR BKN006
● FM270500 24006KT P6SM BKN020
● FM270900 31009KT P6SM SCT020 SCT100

Enroute airport KBID - Block Island State

METAR ● SPECI KBID 261315Z AUTO 05004KT 1/4SM -RA FG OVC002 16/16 A2987 RMK AO2 RAB13 P0000
TAF ● KGON 261140Z 2612/2712 VRB04KT 3/4SM BR VCSH OVC003
● TEMPO 2612/2613 1/4SM FG VV002
● FM261300 05005KT 3/4SM BR OVC004
● TEMPO 2613/2615 2SM -SHRA BR
● FM261600 08005KT 1SM BR OVC008
● FM261800 VRB05KT 2SM BR VCSH OVC008
● FM270300 21006KT 5SM BR BKN006
● FM270500 24006KT P6SM BKN020
● FM270900 31009KT P6SM SCT020 SCT100

Enroute airport KWST - Westerly State

METAR ● SPECI KWST 261331Z AUTO 00000KT 2 1/2SM -RA BR OVC004 19/19 A2986 RMK AO2 P0001 T01890189
TAF ● KGON 261140Z 2612/2712 VRB04KT 3/4SM BR VCSH OVC003
● TEMPO 2612/2613 1/4SM FG VV002
● FM261300 05005KT 3/4SM BR OVC004
● TEMPO 2613/2615 2SM -SHRA BR
● FM261600 08005KT 1SM BR OVC008
● FM261800 VRB05KT 2SM BR VCSH OVC008
● FM270300 21006KT 5SM BR BKN006
● FM270500 24006KT P6SM BKN020
● FM270900 31009KT P6SM SCT020 SCT100

Enroute airport KMYV - Martha's Vineyard

METAR ● 261334Z 36003KT 2SM -RA BR SCT003 BKN011 OVC036 18/18 A2985 RMK AO2 RAB1255E04B23 P0002
T01830178
TAF ● KFMH 261120Z 2612/2712 08006KT 1/4SM -SHRADZ FG OVC002
● FM261400 10006KT 1/2SM -SHRA FG OVC002
● FM261700 14004KT 1SM -SHRA BR OVC003
● FM262300 23003KT 1/2SM FG OVC002
● FM270300 23005KT 3/4SM BR OVC002
● FM271000 26005KT 5SM BR BKN020

SIGMETs

East U.S.**CONVECTIVE SIGMET**

WSUS31 KPCI 261255
SIGE
?MKCE WST 261255
CONVECTIVE SIGMET 13E
VALID UNTIL 1455Z
FL CSTL WTRS
FROM 90WSW CTY-70WNW PIE-90W PIE-150SSW TLH-90WSW CTY
AREA EMBD TS MOV FROM 27035KT. TOPS TO FL420.
OUTLOOK VALID 261455-261855
AREA 1...FROM MPV-140SE BGR-190SE ACK-190S ACK-HTO-MPV
WST ISSUANCES POSS. REFER TO MOST RECENT ACUS01 KWNS FROM STORM
PREDICTION CENTER FOR SYNOPSIS AND METEOROLOGICAL DETAILS.
AREA 2...FROM AMG-60SSE SAV-SRQ-190WSW PIE-CEW-AMG
WST ISSUANCES POSS. REFER TO MOST RECENT ACUS01 KWNS FROM STORM
PREDICTION CENTER FOR SYNOPSIS AND METEOROLOGICAL DETAILS.

No SIGMET found for KZNY, KZBW

NOTAMs

NOTAMs have been filtered using the following criteria:

Filtered NOTAMs not active during this flight

Filtered all non-oceanic ARTCC NOTAMs

Recent NOTAMs (added or edited within 12 hours) KMMU - Morristown Municipal

RUNWAY

MMU 10/082 MMU RWY 23 FICON 5/5/5 100 PCT WET OBS AT 2210260958. 2210260958-2210270958
MMU 10/083 MMU RWY 31 FICON 5/5/5 100 PCT WET OBS AT 2210260958. 2210260958-2210270958

Departure KMMU - Morristown Municipal

RUNWAY

MMU 10/081 MMU RWY 05 HLDG PSN SIGN AT TWY D LGT **U/S** 2210252305-2211011900
MMU 10/080 MMU RWY 31 PAPI **U/S** 2210251524-2212201700
MMU 10/041 MMU RWY 23 ALS **U/S** 2210101428-2211072359

AERODROME

MMU 10/037 MMU AD AP ALL SFC WIP CONST 2210071255-2211111000
MMU 01/104 MMU AD AP RDO ALTIMETER UNREL. AUTOLAND, HUD TO TOUCHDOWN, ENHANCED FLT VISION SYSTEMS TO TOUCHDOWN, HEL OPS REQUIRING RDO ALTIMETER DATA TO INCLUDE HOVER AUTOPILOT MODES AND CAT A/B/PERFORMANCE CLASS TKOF AND LDG NOT AUTHORIZED EXC FOR ACFT USING APPROVED ALTERNATIVE METHODS OF COMPLIANCE DUE TO 5G C-BAND INTERFERENCE PLUS SEE AIRWORTHINESS DIRECTIVES 2021-23-12, 2021-23-13 2201190501-2401190501

OBSTRUCTION

MMU 09/093 MMU OBST TOWER LGT (ASR 1046886) 405045.00N0743636.00W (9.2NM WNW MMU) 1464.2FT (450.1FT AGL) **U/S** 2209270138-2211110137

NAVIGATION

MMU 10/040 MMU NAV ILS RWY 23 GP **U/S** 2210101409-2211072359

STANDARD INSTRUMENT PROCEDURE

FDC 2/9566 MMU SID MORRISTOWN MUNI, MORRISTOWN, NJ. MORRISTOWN SEVEN DEPARTURE ... COATE, ELIOT, NEWEL DEPARTURES: NA EXCEPT FOR AIRCRAFT EQUIPPED WITH SUITABLE RNAV SYSTEM WITH GPS, SAX VORTAC **OUT OF SERVICE** 2209191420-2305011420EST

INSTRUMENT APPROACH PROCEDURE

FDC 1/6151 MMU IAP MORRISTOWN MUNI, MORRISTOWN, NJ. RNAV (RNP) Y RWY 23, ORIG-A... PROCEDURE NA. 2108121146-2308121146EST

Recent NOTAMs (added or edited within 12 hours) KACK - Nantucket Memorial

OBSTRUCTION

ACK 10/045 ACK OBST TOWER LGT (ASN 2009-ANE-315-OE) 411505N0700743W (3.1NM W ACK) 359FT (343FT AGL) **U/S** 2210260623-2212100623

Destination KACK - Nantucket Memorial

RUNWAY

ACK 10/044 ACK RWY 24 ALS HIGH INTST **U/S** 2210251127-2210282000EST
ACK 10/012 ACK RWY 06 ALS **U/S** 2210101532-2210312000EST
ACK 09/009 ACK RWY 06 SEQUENCED FLG LGT **U/S** 2209161028-2210312000EST
ACK 06/010 ACK RWY 12/30 NOW TWY C 2206031359-PERM
ACK 03/043 ACK RWY 12/30 SFC MARKINGS REMOVED 2203281100-PERM
ACK 03/044 ACK RWY 12/30 **CLSD** 2203281100-PERM

TAXIWAY

ACK 03/018 ACK TWY F **CLSD** DLY 0100-1100 2203140100-2211061100

AERODROME

ACK 01/044 ACK AD AP RDO ALTIMETER UNREL. AUTOLAND, HUD TO TOUCHDOWN, ENHANCED FLT VISION SYSTEMS TO TOUCHDOWN, HEL OPS REQUIRING RDO ALTIMETER DATA TO INCLUDE HOVER AUTOPILOT MODES AND CAT A/B/PERFORMANCE CLASS TKOF AND LDG NOT AUTHORIZED EXC FOR ACFT USING APPROVED ALTERNATIVE METHODS OF COMPLIANCE DUE TO 5G C-BAND INTERFERENCE PLUS SEE AIRWORTHINESS DIRECTIVES 2021-23-12, 2021-23-13 2201190501-2401190501

OBSTRUCTION

ACK 10/040 ACK OBST ANTENNA (ASN UNKNOWN) 411514N0700332W (.25NM SE ACK) UNKNOWN (68FT AGL) NOT LGTD 2210231340-2301312300
ACK 10/009 ACK OBST ANTENNA (ASN UNKNOWN) 411445N0700425W (0.92NM SW ACK) UNKNOWN (32FT AGL) NOT LGTD 2210090052-2212310121
ACK 10/008 ACK OBST ANTENNA (ASN UNKNOWN) 411457N0700404W (0.53NM SSW ACK) UNKNOWN (35FT AGL) NOT LGTD 2210090051-2212310117
ACK 10/001 ACK OBST ANTENNA (ASN UNKNOWN) 412421N0700746W (.75NM S ACK) UNKNOWN (29FT AGL) NOT LGTD 2210020038-2306012000

NAVIGATION

ACK 10/043 ACK NAV ILS RWY 06 **U/S** 2210251013-2210282000EST
ACK 10/039 ACK NAV ILS RWY 24 DME **U/S** 2210211702-2211072000EST
ACK 10/038 ACK NAV ILS RWY 06 DME **U/S** 2210211701-2211072000EST
ACK 08/031 ACK NAV ILS RWY 24 LOC **U/S** 2208261300-2210312000EST

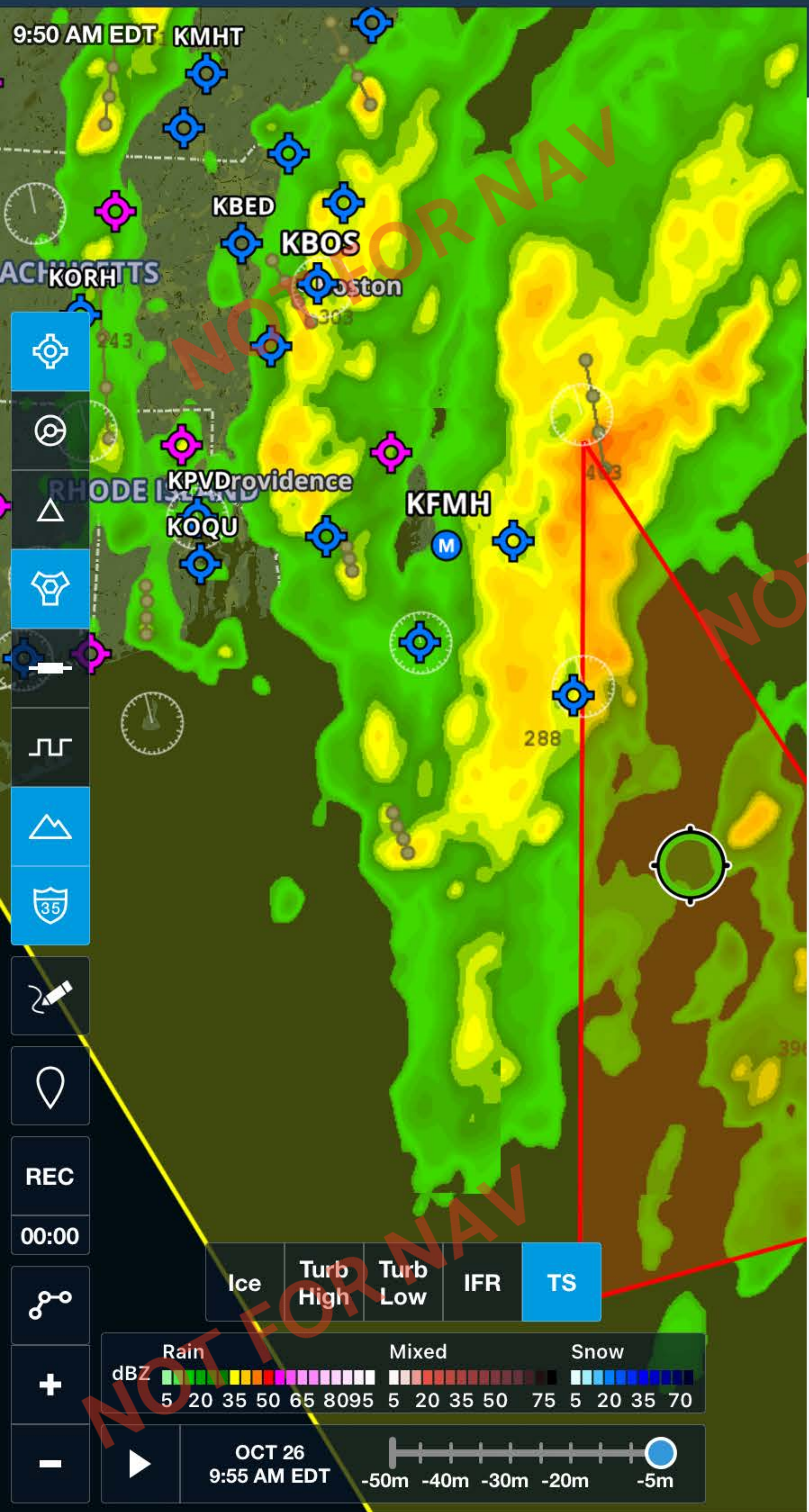
OBSTACLE DEPARTURE PROCEDURE

FDC 2/3606 ACK ODP NANTUCKET MEML, NANTUCKET, MA. TAKEOFF MINIMUMS AND (OBSTACLE)
DEPARTURE PROCEDURES AMDT 3... ADD TAKEOFF OBSTACLE NOTE: RWY 33, BUILDING 527FT FROM
DER, 622FT RIGHT OF CENTERLINE, 21FT AGL/66FT MSL (2021-ANE-1548-NRA). ALL OTHER DATA
REMAINS AS PUBLISHED. 2208192043-2408192043EST

Enroute navigation NOTAMS

NAVIGATION

BUF 10/177 GGT NAV TACAN **U/S** 2210260504-2210282000EST
HPN 03/050 HPN NAV ILS RWY 16 NOT MNT DLY 0300-1000 2203140300-2211051000
HPN 03/051 HPN NAV ILS RWY 34 NOT MNT DLY 0300-1000 2203140300-2211051000
HPN 03/052 HPN NAV ILS RWY 16 SPECIAL AUTH CAT II NA DLY 0300-1000 2203140300-2211051000
PVD 10/239 PVD NAV VOR/DME **U/S** 2210261300-2210261500
PVD 10/244 PVD NAV ILS RWY 34 LOC/DME **U/S** 2210261300-2210261900
HFD 10/010 HFD NAV LOC TYPE DIRECTIONAL AID RWY 02 LOC **U/S** 2210260415-2210282000EST
JFK 10/197 JFK NAV VOR/DME **U/S** 2210241100-2211071100
JFK 10/261 JFK NAV ILS RWY 04L GP **U/S** 2210231105-2210262359
ISP 10/086 CMK NAV VOR **U/S** 2210071300-2310022000EST
MIV 09/155 SAX NAV VOR **U/S** 2209221916-2303242111EST
HYA 08/050 HYA NAV ILS RWY 15 GP **U/S** 2208291432-2210312000EST
TEB 07/092 TEB NAV ILS RWY 19 LOC/GP/DME **U/S** 2207122013-2211012359
MIV 06/166 BWZ NAV VOR/DME 095-105 UNUSABLE 2206171141-2212172111EST
MIV 06/165 BWZ NAV VOR/DME 245-255 UNUSABLE 2206171140-2212172111EST
MIV 06/164 BWZ NAV VOR/DME 210-235 UNUSABLE 2206171137-2212172111EST
MIV 11/089 COL NAV VOR **U/S** 211101745-2212212359



Close Map Info

- Convective**
Oct 26, 9:55 AM - 11:55 AM EDT
Active, Surface - 40,000' MSL
- Convective**
Oct 26, 11:55 AM - 3:55 PM EDT
Outlook

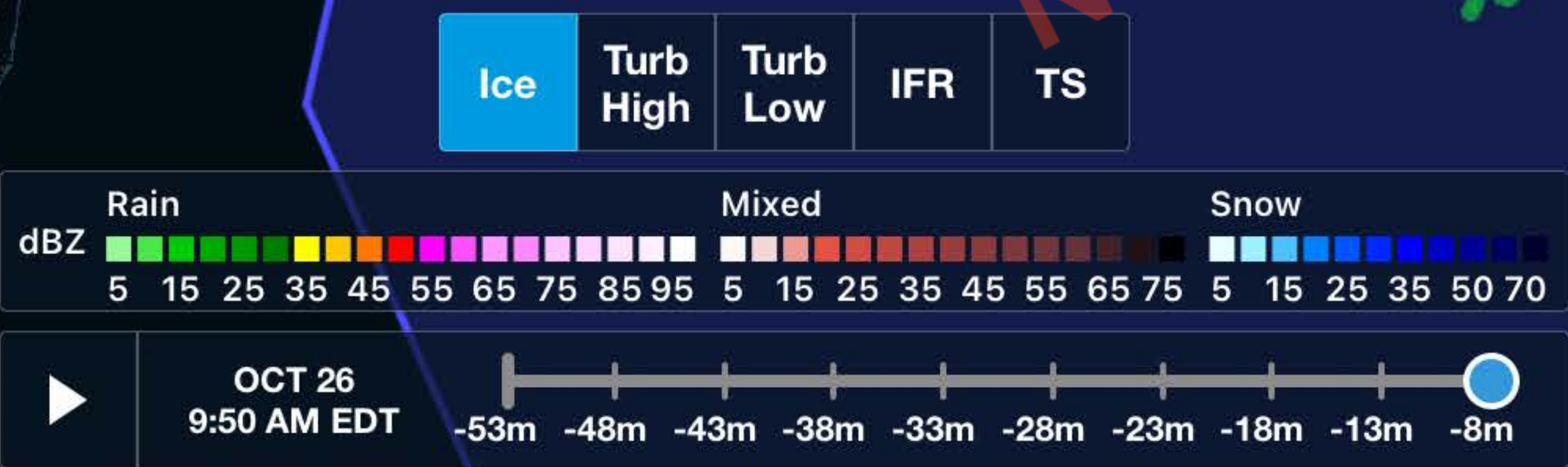
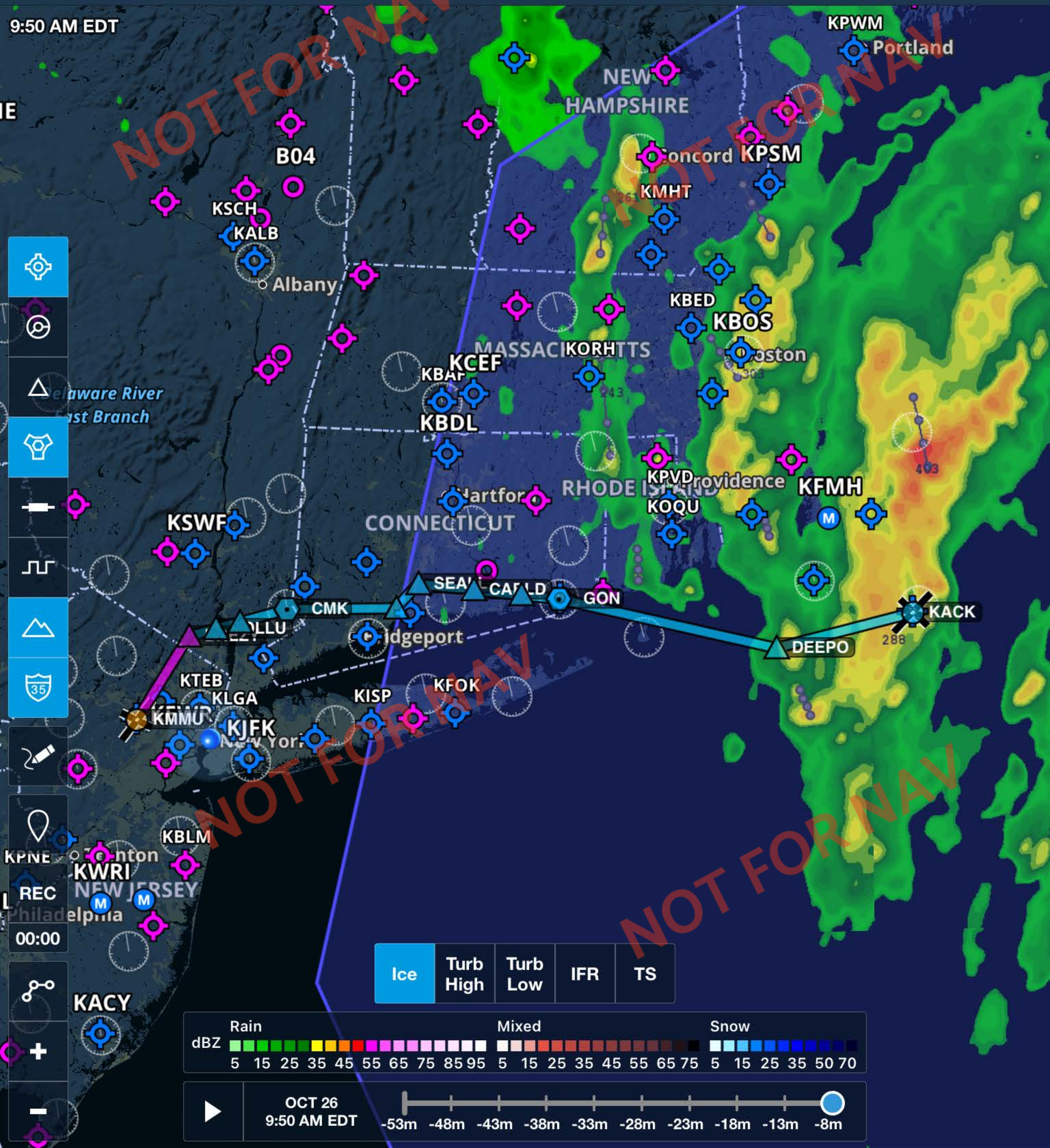
REC
00:00

Ice Turb High Turb Low IFR TS

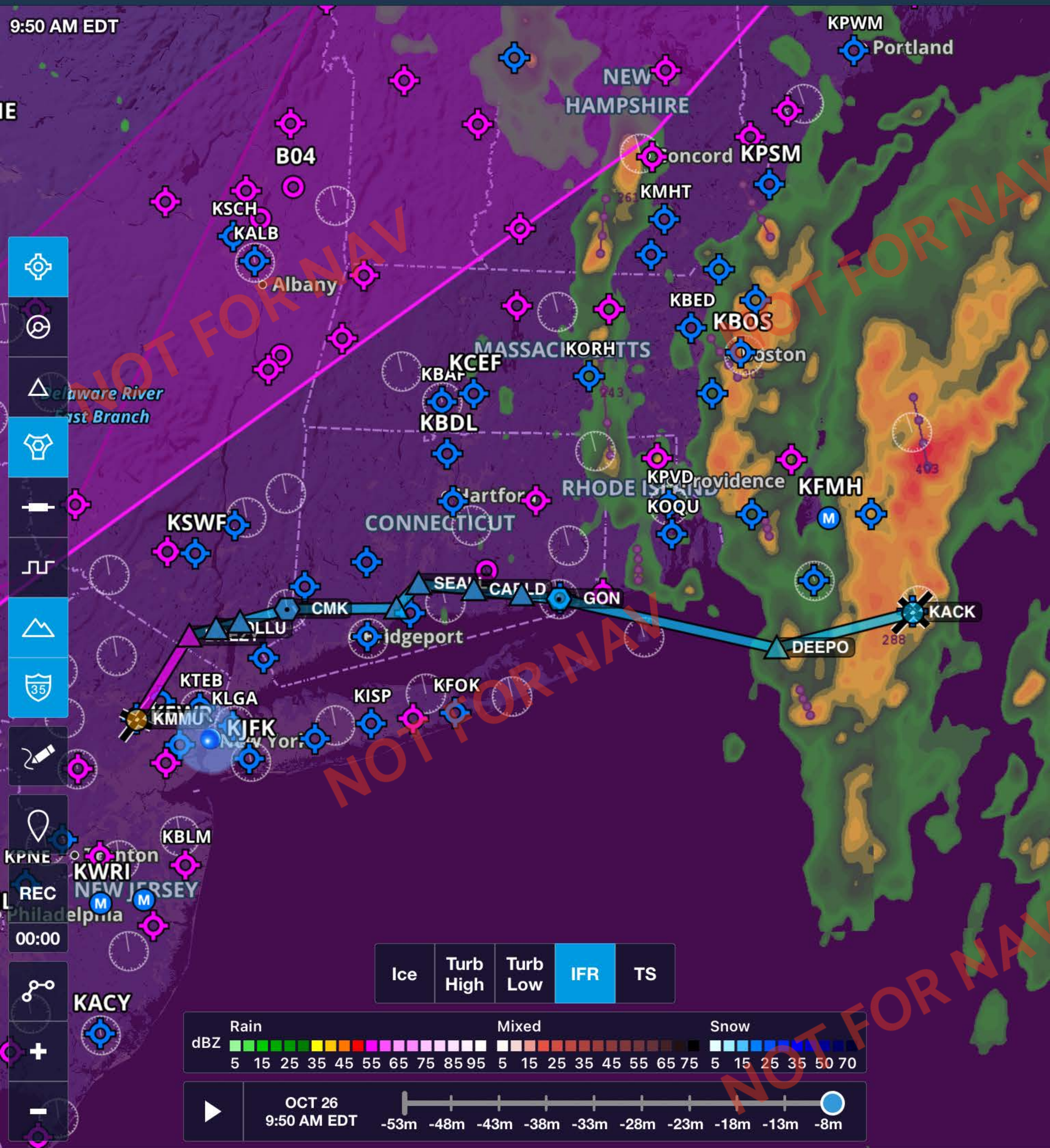
Rain Mixed Snow
dBZ 5 20 35 50 65 80 95 5 20 35 50 75 5 20 35 70

OCT 26 9:55 AM EDT -50m -40m -30m -20m -5m

Distance to Next: 35 nm
ETE Dest: -----
Pressure Altitude: -----
Accuracy: 30 m
Track: 80°M
Accuracy: 30 m



Distance to Next: **27 nm** ETE Dest: ----- Pressure Altitude: ----- Accuracy: **10 m** Track: **252°M** Accuracy: **10 m**

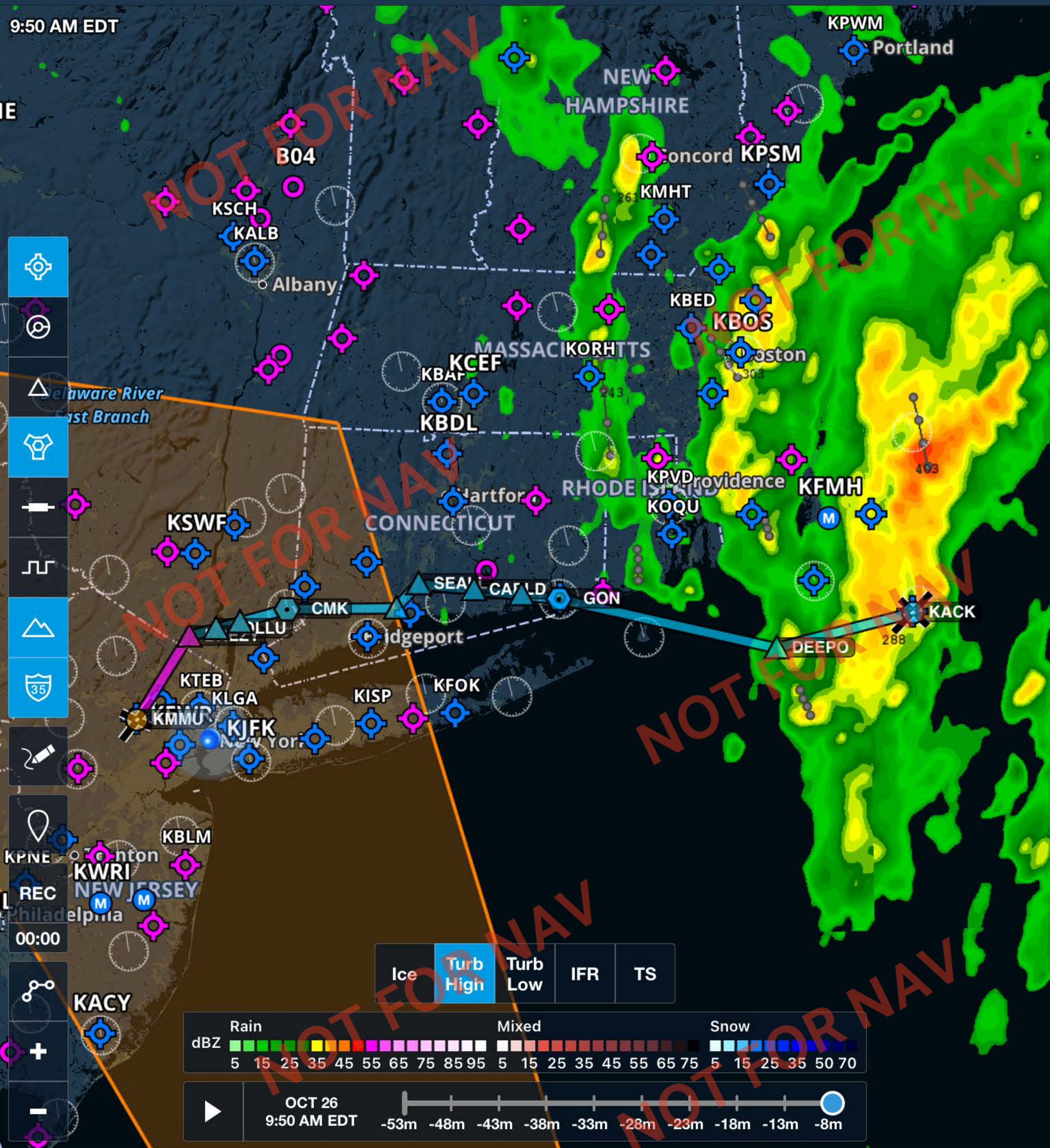


- Map navigation icons: Home, Refresh, Layers, Settings, Scale, Terrain, Elevation, 35, Draw, Location, REC, 00:00, Link, Zoom In, Zoom Out.

Ice	Turb High	Turb Low	IFR	TS
-----	-----------	----------	------------	----



Distance to Next	ETE Dest	Pressure Altitude	Accuracy	Track	Accuracy
27 nm	-----	-----	10 m	112°M	10 m



Distance to Next: **27 nm**

ETE Dest: -----

Pressure Altitude: -----

Accuracy: **10 m**

Track: **94°M**

Accuracy: **10 m**