

DIST
145 nm

ETE
1h33m

ETA
1527Z

FLIGHT FUEL
16 g

WIND
13 kts head

Calculated a few seconds ago [Refresh](#)

Navlog

Briefing

0 Files

0 New Msg

OVERVIEW

ETD ETA
10/26/2022 1355Z
Departure
KMMU [Takeoff](#) [Info](#)
Destination
KMDT [Landing](#) [Info](#)

Alternate
Optional
Aircraft
N106ST (C172)
Performance Profile
Max RPM Lean Mixture ...

ROUTE

Route
SBJ V30 ETX V162 HAR
Routes >
Altitude
6,000
Advisor >

Flight Rules
IFR

PAYLOAD

PAYLOAD (LBS)	COUNT	AVG. WT.	TOTAL
Persons	2	200	400
Cargo			0
Total Payload			400

FUEL

Fuel Policy
Minimum Fuel

FUEL ALLOCATION

	LBS	GAL
Start	131	22
15 gal available	/222	/37
Flight Fuel	96	16
Taxi Fuel	7	1
Fuel to Destination	89	15
Fuel at Landing	35	6
Alternate Fuel	0	0
Reserve Fuel	35	6
Extra Fuel	0	0

WEIGHTS

WEIGHTS	LBS
Zero Fuel Weight	1,660
540 lb available	/ 2,200
Total Fuel at Start	131
Ramp Weight	1,791
416 lbs available	/ 2,207
Taxi/Takeoff Fuel	7
Takeoff Weight	1,784
416 lbs available	/ 2,200
Fuel to Destination	89
Landing Weight	1,695
505 lb available	/ 2,200

DESTINATION SERVICES

FBO
Optional
Select FBO >

FLIGHT LOG

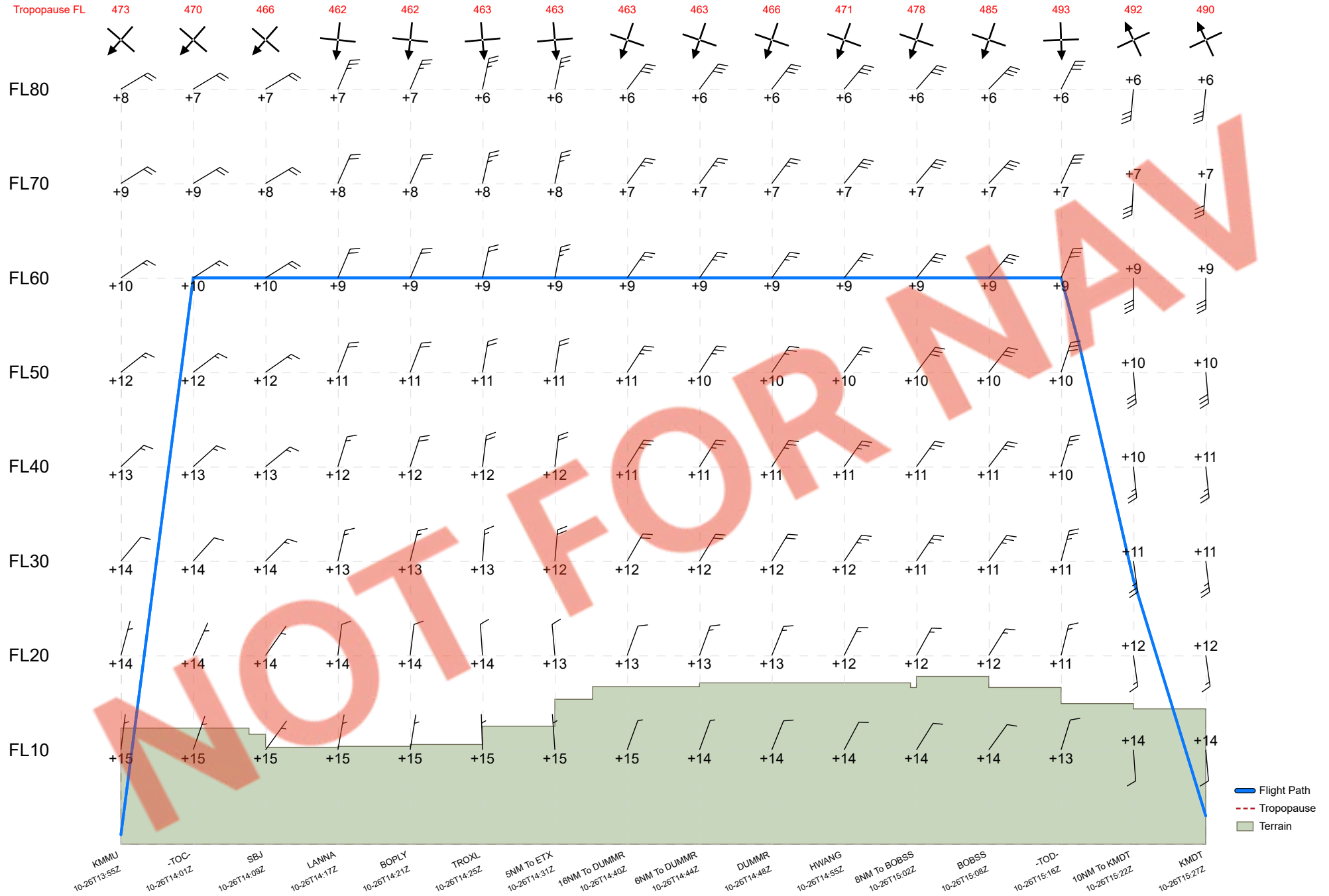
Fuel at Shutdown (g)
0
Times
Optional
Edit >

Vertical Cross Section Chart

Data by NCEP

Chart by ForeFlight

Data source: Oct 26 2022 0600Z Time: Oct 26 2022 1343Z



Turbulence EDR: 0.0 < [Color Scale] < 1.0

Icing Severity: [Icing Symbols]

Temperatures are written as degree celsius and are negative if not prefixed with +

WIND/TEMP/TURB

FL 60

Data by NCEP
Chart by ForeFlight

WIND/TEMP TURBULENCE

Data source: Oct 26 2022 0600Z

Time: Oct 26 2022 1355Z

Projection: LAMBERT


Turbulence EDR:



SIG. WEATHER
FL 250 to 630
Data by WAFC LONDON
Chart by ForeFlight

FIXED TIME PROGNOSTIC CHART
VALID Oct 26 2022 1200Z

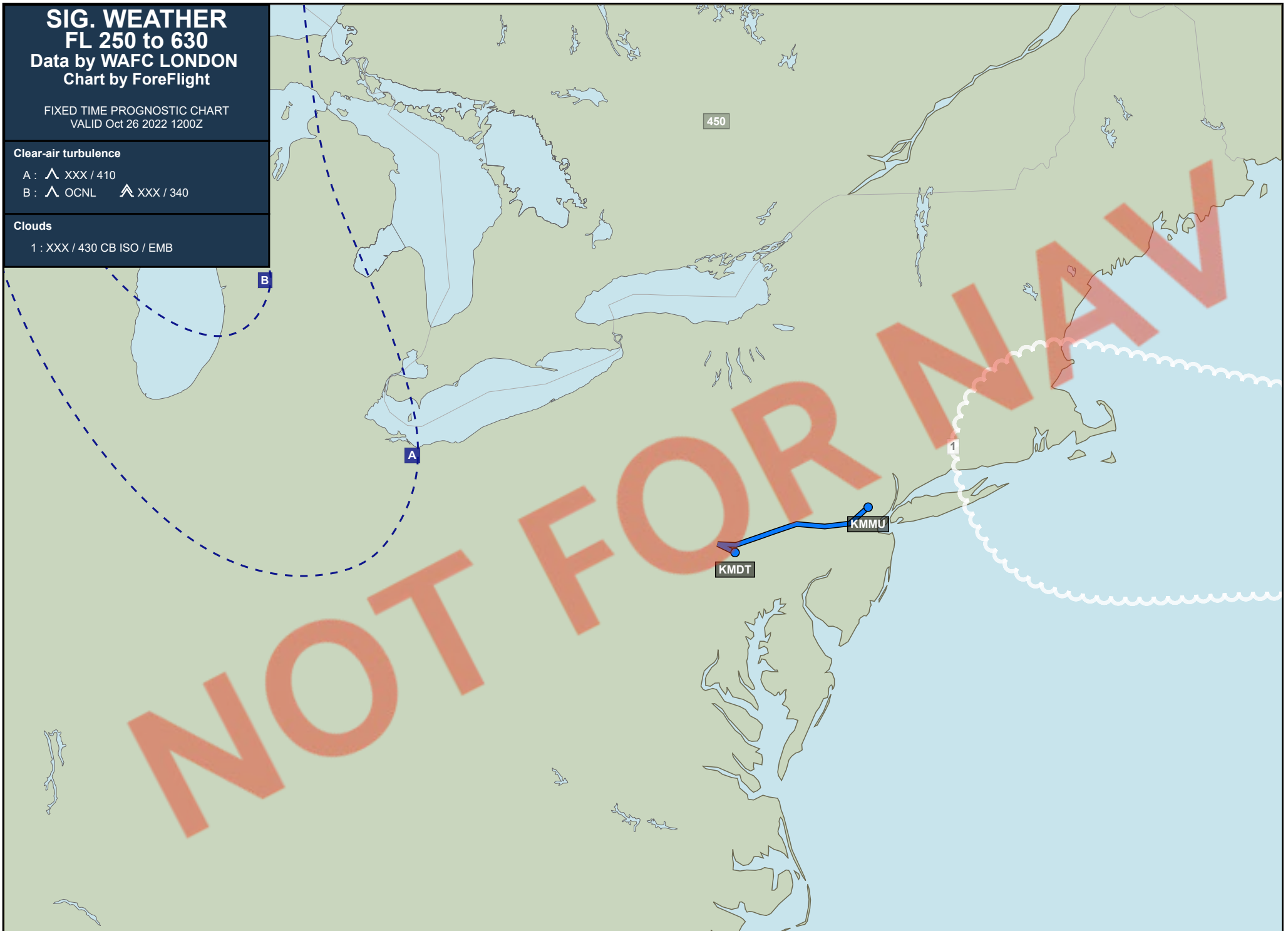
Clear-air turbulence

A :  XXX / 410

B :  OCNL  XXX / 340

Clouds

1 : XXX / 430 CB ISO / EMB



METARs / TAFs

Departure **KMMU - Morristown Municipal**

METAR ● METAR KMMU 261245Z 0000KT 1 1/2SM BR OVC004 20/20 A2987

TAF ● **KEWR 261307Z 2613/2718 VRB03KT 1SM BR OVC004**

- **TEMPO 2613/2614 3/4SM BR**
- FM261400 VRB03KT 5SM BR OVC004
- FM261600 20005KT P6SM OVC007
- FM262000 22006KT P6SM BKN015 OVC030
- TEMPO 2620/2622 5SM -SHRA BR BKN010
- FM262200 23007KT P6SM VCSH SCT010 BKN025
- FM262300 24006KT P6SM VCSH SCT020 BKN035
- FM270100 28005KT P6SM SCT070
- FM271000 32010KT P6SM FEW070
- FM271500 32012G17KT P6SM FEW250

Destination **KMDT - Harrisburg International**

METAR ● SPECI KMDT 261303Z 15006KT 3SM BKN007 BKN048 16/13 A2984 RMK AO2 SFC VIS 10 T01560133

TAF ● 261139Z 2612/2712 VRB04KT 2SM BR VCSH BKN006 OVC010

- FM261300 16004KT 4SM BR VCSH OVC008
- **FM261500 17004KT 6SM BR VCSH OVC015**
- FM262100 26005KT P6SM OVC025
- FM270500 32012G23KT P6SM BKN022

Enroute airport **KCDW - Essex County**

METAR ● SPECI KCDW 261326Z 11003KT 6SM BR OVC005 18/17 A2986 RMK AO2 T01780167

TAF ● KTEB 261315Z 2613/2718 VRB03KT 2SM BR OVC003

- TEMPO 2613/2614 3/4SM BR
- FM261500 19004KT 6SM BR VCSH BKN009 OVC012
- FM262000 20005KT 5SM BR VCSH BKN015 OVC030
- TEMPO 2620/2622 5SM -SHRA BR BKN010
- FM262200 21005KT P6SM VCSH SCT010 BKN025
- FM262300 23006KT P6SM VCSH SCT020 BKN035
- FM270100 25005KT P6SM SCT070
- FM271000 32010KT P6SM FEW070
- FM271500 32012G17KT P6SM FEW250

Enroute airport **KABE - Lehigh Valley International**

METAR ● 261251Z 11006KT 10SM OVC005 17/16 A2984 RMK AO2 SLP102 T01720156

TAF ● 261120Z 2612/2712 10004KT 6SM BR OVC005

- TEMPO 2612/2616 2SM -RA BR OVC003
- FM261600 17005KT 5SM BR OVC007
- FM261900 20008KT P6SM VCSH BKN010
- FM262200 22007KT P6SM VCSH BKN030
- FM270000 26004KT P6SM SCT080
- FM270700 29007KT P6SM FEW040

Enroute airport **KXLL - Allentown Queen City Municipal**

METAR ● METAR KXLL 261335Z AUTO 17004KT 10SM OVC006 17/17 A2985 RMK AO2

TAF ● KABE 261120Z 2612/2712 10004KT 6SM BR OVC005

- TEMPO 2612/2616 2SM -RA BR OVC003
- FM261600 17005KT 5SM BR OVC007
- FM261900 20008KT P6SM VCSH BKN010
- FM262200 22007KT P6SM VCSH BKN030
- FM270000 26004KT P6SM SCT080
- FM270700 29007KT P6SM FEW040

Enroute airport **KRDG - Reading Regional/Carl A Spatz Field**

METAR ● METAR KRDG 261254Z 26004KT 3/4SM R36/5000VP6000FT RA BR OVC004 17/17 A2983 RMK AO2 SLP106 P008 T01670167

TAF ● 261120Z 2612/2712 VRB03KT 3SM BR OVC007

- TEMPO 2612/2616 1SM -RA BR OVC004

- FM261600 18006KT 4SM BR OVC007
- FM261800 20008KT P6SM VCSH BKN010
- FM262100 22007KT P6SM VCSH BKN030
- FM270000 26004KT P6SM SCT080
- FM270700 30006KT P6SM FEW040

Enroute airport **KCXY - Capital City**

METAR • 261317Z COR 16004KT 6SM BR BKN010 OVC048 16/13 A2986 RMK AO2 T01610133
TAF • KMDT 261139Z 2612/2712 VRB04KT 2SM BR VCSH BKN006 OVC010
• FM261300 16004KT 4SM BR VCSH OVC008
• FM261500 17004KT 6SM BR VCSH OVC015
• FM262100 26005KT P6SM OVC025
• FM270500 32012G23KT P6SM BKN022

SIGMETs

East U.S.

CONVECTIVE SIGMET

WSUS31 KPCI 261255
SIGE
?MKCE WST 261255
CONVECTIVE SIGMET 13E
VALID UNTIL 1455Z
FL CCTL WTRS
FROM 90WSW CTY-70WNW PIE-90W PIE-150SSW TLH-90WSW CTY
AREA EMBD TS MOV FROM 27035KT. TOPS TO FL420.
OUTLOOK VALID 261455-261855
AREA 1...FROM MPV-140SE BGR-190SE ACK-190S ACK-HTO-MPV
WST ISSUANCES POSS. REFER TO MOST RECENT ACUS01 KWNS FROM STORM
PREDICTION CENTER FOR SYNOPSIS AND METEOROLOGICAL DETAILS.
AREA 2...FROM AMG-60SSE SAV-SRQ-190WSW PIE-CEW-AMG
WST ISSUANCES POSS. REFER TO MOST RECENT ACUS01 KWNS FROM STORM
PREDICTION CENTER FOR SYNOPSIS AND METEOROLOGICAL DETAILS.

No SIGMET found for KZNY

NOTAMs

NOTAMs have been filtered using the following criteria:

Filtered NOTAMs not active during this flight

Filtered all non-oceanic ARTCC NOTAMs

Recent NOTAMs (added or edited within 12 hours) KMMU - Morristown Municipal

RUNWAY

MMU 10/082 MMU RWY 23 FICON 5/5/5 100 PCT WET OBS AT 2210260958. 2210260958-2210270958
MMU 10/083 MMU RWY 31 FICON 5/5/5 100 PCT WET OBS AT 2210260958. 2210260958-2210270958

Departure KMMU - Morristown Municipal

RUNWAY

MMU 10/081 MMU RWY 05 HLDG PSN SIGN AT TWY D LGT **U/S** 2210252305-2211011900
MMU 10/080 MMU RWY 31 PAPI **U/S** 2210251524-2212201700
MMU 10/041 MMU RWY 23 ALS **U/S** 2210101428-2211072359

AERODROME

MMU 10/037 MMU AD AP ALL SFC WIP CONST 2210071255-2211111000
MMU 01/104 MMU AD AP RDO ALTIMETER UNREL. AUTOLAND, HUD TO TOUCHDOWN, ENHANCED FLT VISION SYSTEMS TO TOUCHDOWN, HEL OPS REQUIRING RDO ALTIMETER DATA TO INCLUDE HOVER AUTOPILOT MODES AND CAT A/B/PERFORMANCE CLASS TKOF AND LDG NOT AUTHORIZED EXC FOR ACFT USING APPROVED ALTERNATIVE METHODS OF COMPLIANCE DUE TO 5G C-BAND INTERFERENCE PLUS SEE AIRWORTHINESS DIRECTIVES 2021-23-12, 2021-23-13 2201190501-2401190501

OBSTRUCTION

MMU 09/093 MMU OBST TOWER LGT (ASR 1046886) 405045.00N0743636.00W (9.2NM WNW MMU) 1464.2FT (450.1FT AGL) **U/S** 2209270138-2211110137

NAVIGATION

MMU 10/040 MMU NAV ILS RWY 23 GP **U/S** 2210101409-2211072359

STANDARD INSTRUMENT PROCEDURE

FDC 2/9566 MMU SID MORRISTOWN MUNI, MORRISTOWN, NJ. MORRISTOWN SEVEN DEPARTURE ... COATE, ELIOT, NEWEL DEPARTURES: NA EXCEPT FOR AIRCRAFT EQUIPPED WITH SUITABLE RNAV SYSTEM WITH GPS, SAX VORTAC **OUT OF SERVICE** 2209191420-2305011420EST

INSTRUMENT APPROACH PROCEDURE

FDC 1/6151 MMU IAP MORRISTOWN MUNI, MORRISTOWN, NJ. RNAV (RNP) Y RWY 23, ORIG-A... PROCEDURE NA. 2108121146-2308121146EST

Recent NOTAMs (added or edited within 12 hours) KMDT - Harrisburg International

TAXIWAY

MDT 10/083 MDT TWY A WEST HLDG PSN SIGN LGT **U/S** 2210261117-2210272000

Destination KMDT - Harrisburg International

TAXIWAY

MDT 10/041 MDT TWY A BTN TWY E AND TWY F **CLSD** TO ACFT WINGSPAN MORE THAN 171FT 2210131915-2212022300

AERODROME

MDT 01/085 MDT AD AP RDO ALTIMETER UNREL. AUTOLAND, HUD TO TOUCHDOWN, ENHANCED FLT VISION SYSTEMS TO TOUCHDOWN, HEL OPS REQUIRING RDO ALTIMETER DATA TO INCLUDE HOVER AUTOPILOT MODES AND CAT A/B/PERFORMANCE CLASS TKOF AND LDG NOT AUTHORIZED EXC FOR ACFT USING APPROVED ALTERNATIVE METHODS OF COMPLIANCE DUE TO 5G C-BAND INTERFERENCE PLUS SEE AIRWORTHINESS DIRECTIVES 2021-23-12, 2021-23-13 2201190501-2401190501

OBSTRUCTION

MDT 10/051 MDT OBST CRANE (ASN UNKNOWN) 401120N0764514W (0.2NM NW APCH END RWY 31) 358FT (60FT AGL) FLAGGED AND LGTD 2210180040-2210312200
MDT 10/022 MDT OBST CRANE (ASN UNKNOWN) 401120N0764514W (0.2NM SW APCH END RWY 31) 358FT (60FT AGL) FLAGGED AND LGTD 2210061857-2210312200
MDT 01/001 MDT OBST TOWER LGT (ASR 1258297) 400909.40N0764252.20W (3.3NM SE MDT) 554.1FT (225.1FT AGL) **U/S** 2201010512-2212312359

NAVIGATION

MDT 08/140 MDT NAV ILS RWY 13 ENOLA LOM **U/S** 2208301120-2212302000EST

INSTRUMENT APPROACH PROCEDURE

FDC 2/2588 MDT IAP HARRISBURG INTL, HARRISBURG, PA. ILS OR LOC RWY 13, AMDT 2B... S-LOC 13 NA EXCEPT FOR ACFT EQUIPPED WITH SUITABLE RNAV SYSTEM WITH GPS, ENOLA (MD) LOM OUT OF SERVICE. 2209071427-2304191426EST

FDC 2/8640 MDT IAP HARRISBURG INTL, HARRISBURG, PA. ILS RWY 13 (CAT II - III), AMDT 2B ... PROCEDURE NA EXC FOR ACFT USING APPROVED ALTERNATIVE METHODS OF COMPLIANCE DUE TO 5G C-BAND INTERFERENCE PLUS SEE AIRWORTHINESS DIRECTIVES 2021-23-12, 2021-23-13 2201271601-2401271600EST

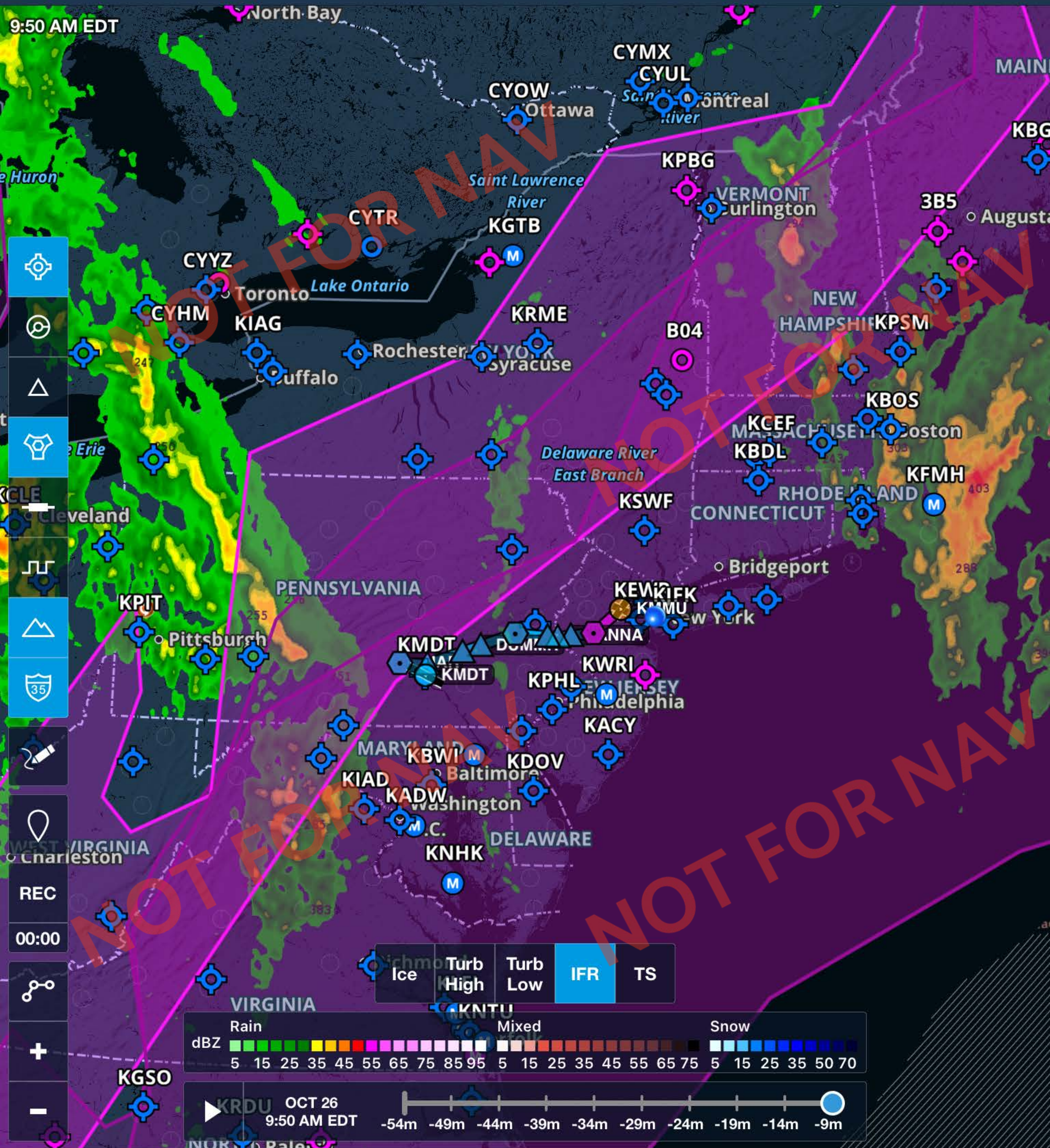
FDC 0/6650 MDT IAP HARRISBURG INTL, HARRISBURG, PA. VOR RWY 31, AMDT 2B... S-31 ALL CATS MDA 1240/HAA 930, CAT A/B VISIBILITY 1 1/4. CIRCLING CAT A/B/C MDA 1240/HAA 930, CAT D MDA 1400/HAA 1090, CIRCLING CAT C VISIBILITY 2 3/4, CAT D VISIBILITY 3. ALTERNATE MINIMUMS: CAT C 1000-2 3/4, CAT D 1100-3. 2011302012-2211302012EST

Enroute navigation NOTAMs

NAVIGATION

MIV 09/155 SAX NAV VOR **U/S** 2209221916-2303242111EST
TEB 07/092 TEB NAV ILS RWY 19 LOC/GP/DME **U/S** 2207122013-2211012359
MIV 06/166 BWZ NAV VOR/DME 095-105 UNUSABLE 2206171141-2212172111EST
MIV 06/165 BWZ NAV VOR/DME 245-255 UNUSABLE 2206171140-2212172111EST
MIV 06/164 BWZ NAV VOR/DME 210-235 UNUSABLE 2206171137-2212172111EST
MIV 11/089 COL NAV VOR **U/S** 2111101745-2212212359
ABE 12/128 FJC NAV VOR **U/S** 1912271148-2301092000EST

NOT FOR NAV



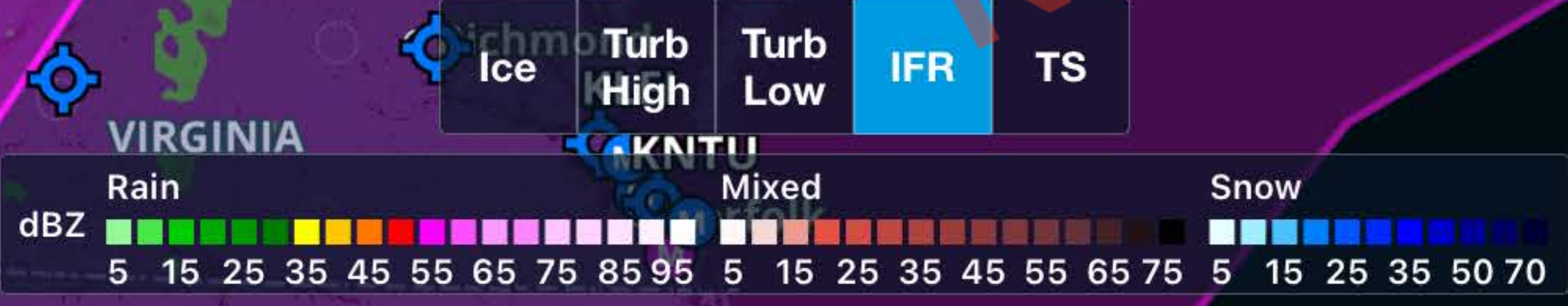
9:50 AM EDT

- Map navigation icons: Home, Refresh, Zoom In, Zoom Out, Full Screen, Layers, Settings, Search, etc.

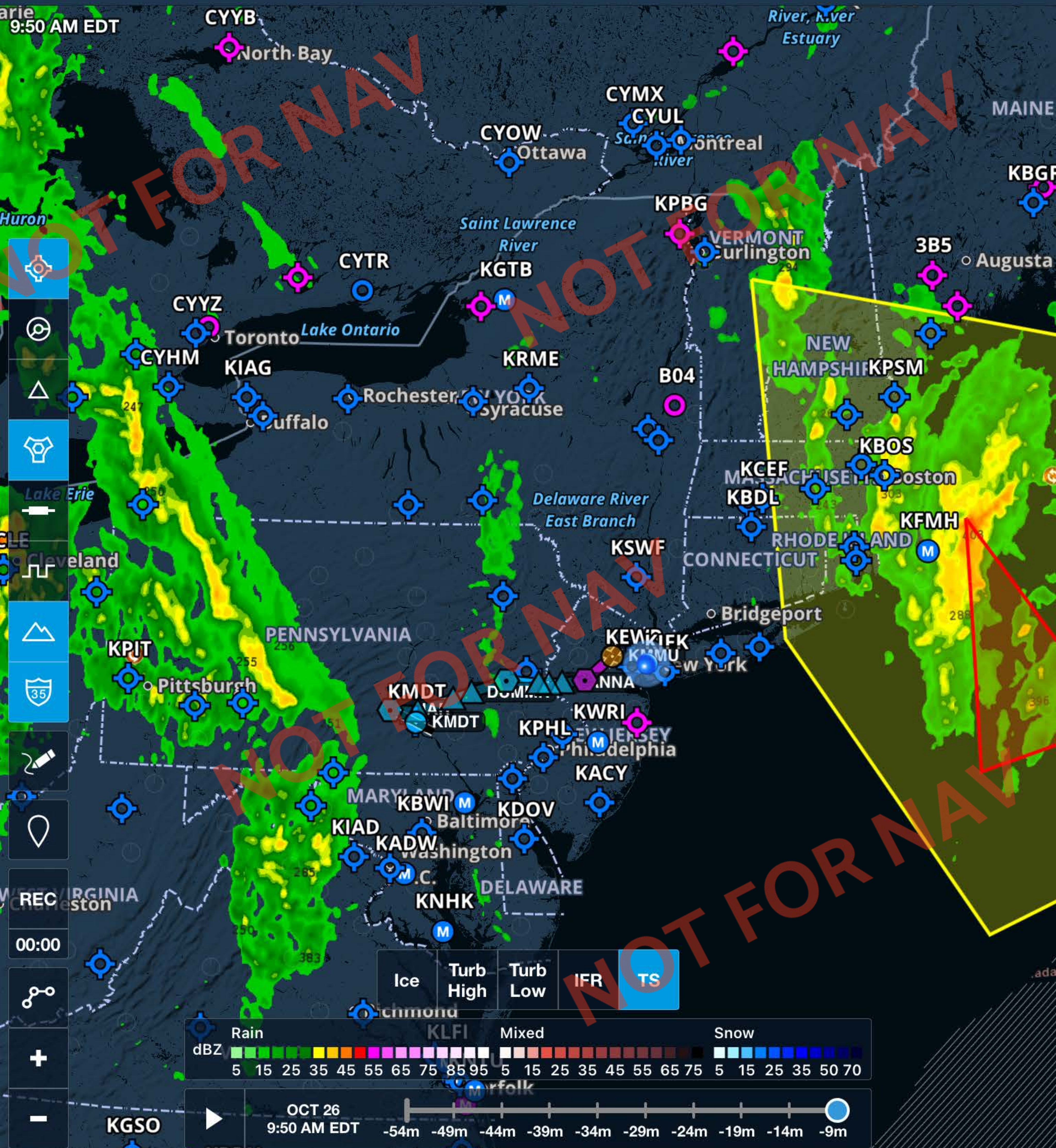
REC

00:00

+



Distance to Next: **35 nm**
 ETE Dest: -----
 Pressure Altitude: -----
 Accuracy: **10 m**
 Track: **270°M**
 Accuracy: **10 m**

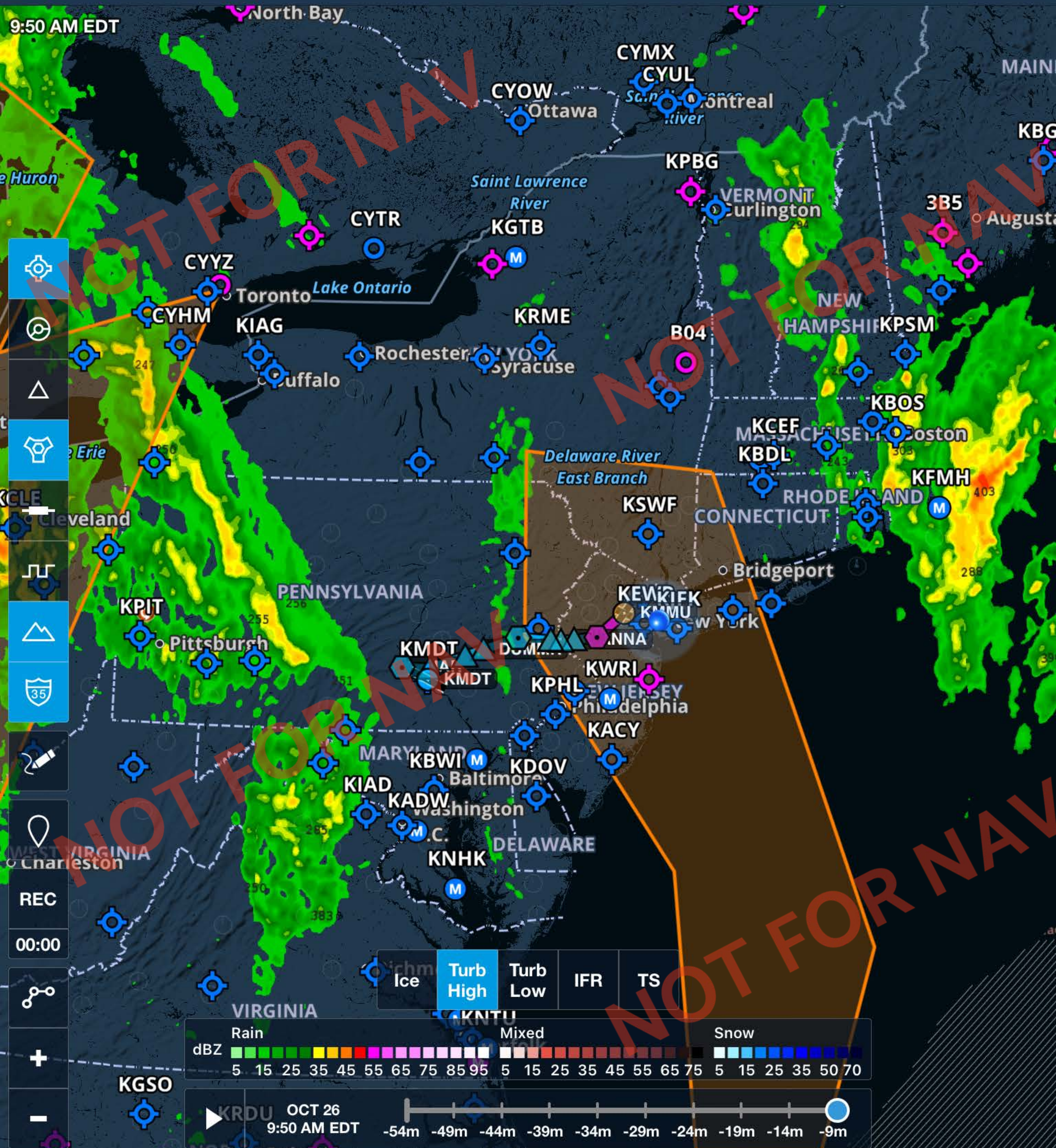


Ice
Turb High
Turb Low
IFR
TS

Rain Mixed Snow
 dBZ 5 15 25 35 45 55 65 75 85 95 5 15 25 35 45 55 65 75 5 15 25 35 50 70

OCT 26 9:50 AM EDT
 -54m -49m -44m -39m -34m -29m -24m -19m -14m -9m

Distance to Next: **35 nm**
 ETE Dest: **108°M**
 Pressure Altitude: **10 m**
 Accuracy: **10 m**



Legend for weather phenomena: Ice, Turb High, Turb Low, IFR, TS.

dBZ Scale: 5, 15, 25, 35, 45, 55, 65, 75, 85, 95.

Scale: -54m to -9m.

Time: OCT 26 9:50 AM EDT.

Distance to Next: **35 nm**
 ETE Dest: -----
 Pressure Altitude: -----
 Accuracy: **10 m**
 Track: **46°M**
 Accuracy: **10 m**